

p:\windsor windows and doors\lbc-17-0810 windsor windows and doors- fbc-submittal- fl11619, fl13643 & fl11619.dwg:\lived case\impact\wvd014.dwg 9/4/2017 4:15 PM

INSTALLATION NOTES:

1. ONE (1) INSTALLATION ANCHOR IS REQUIRED AT EACH ANCHOR LOCATION SHOWN.
2. THE NUMBER OF INSTALLATION ANCHORS DEPICTED IS THE MINIMUM NUMBER OF ANCHORS TO BE USED FOR PRODUCT INSTALLATION OF THE MAXIMUM SIZE LISTED.
3. INSTALL INDIVIDUAL INSTALLATION ANCHORS WITHIN A TOLERANCE OF ±1/2 INCH BASED ON QUANTITIES IN DP CHARTS NOT TO EXCEED THE DEPICTED LOCATION & SPACING IN THE ANCHOR LAYOUT DETAILS (I.E., WITHOUT CONSIDERATION OF TOLERANCES). TOLERANCES ARE NOT CUMULATIVE FROM ONE INSTALLATION ANCHOR TO THE NEXT
4. SHIM AS REQUIRED AT EACH INSTALLATION ANCHOR WITH LOAD BEARING SHIM(S). MAXIMUM ALLOWABLE SHIM STACK TO BE 1/4 INCH. SHIM WHERE SPACE OF 1/16 INCH OR GREATER OCCURS. SHIM(S) SHALL BE CONSTRUCTED OF HIGH DENSITY PLASTIC OR BETTER.
5. **THROUGH FRAME:** FOR INSTALLATION INTO WOOD FRAMING USE #10 WOOD SCREWS OF SUFFICIENT LENGTH TO ACHIEVE 1 1/2" MINIMUM EMBEDMENT INTO WOOD SUBSTRATE.
6. **THROUGH FRAME:** FOR INSTALLATION THROUGH 1X BUCK TO CONCRETE/MASONRY, OR DIRECTLY INTO CONCRETE/MASONRY, USE 1/4" DIAMETER ITW TAPCONS, ELCO ULTRACONS, ELCO CRETE-FLEX OR HILTI KWIK-CON II OF SUFFICIENT LENGTH TO ACHIEVE 1 1/4" MINIMUM EMBEDMENT.
7. **THROUGH FRAME:** FOR INSTALLATION INTO METAL STUD OR APPROVED MULLION USE #10 GR. 5 SELF TAPPING SCREWS OF SUFFICIENT LENGTH TO ACHIEVE A MINIMUM OF 3 THREADS PENETRATION BEYOND METAL FRAME SUBSTRATE.
8. CLIPS SHALL BE FASTENED TO THE WINDOW FRAME WITH (2) #8 X 5/8" SCREWS. CLIPS ARE 20 GAUGE (0.063" THICKNESS) F_y=33 KSI MIN STEEL WITH OVERALL DIMENSIONS OF 1.5" WIDE, 7.813" ALONG THE LONG LEG, AND 1.942" ALONG THE SHORT LEG.
9. **CLIP ANCHOR:** FOR INSTALLATION INTO WOOD FRAMING USE (2) #8 WOOD SCREWS PER CLIP OF SUFFICIENT LENGTH TO ACHIEVE 1 1/2 INCH MINIMUM EMBEDMENT INTO WOOD SUBSTRATE.
10. **CLIP ANCHOR:** FOR INSTALLATION INTO METAL STUD USE (2) #8 GR. 5 SELF-TAPPING SCREWS PER CLIP OF SUFFICIENT LENGTH TO ACHIEVE 3 THREADS MINIMUM PENETRATION BEYOND THE METAL STRUCTURE.
11. 1.5" X 1.5" X 0.060" 6063-T5 ALUMINUM NAIL FIN SHALL BE FASTENED TO THE WINDOW FRAME WITH #8 X 1/2" SCREWS, 8" MAX. ON CENTER AND 4" MAX. FROM CORNERS, AND 3M VHB TAPE.
12. **NAIL FIN:** FOR INSTALLATION INTO WOOD FRAMING USE #8 WOOD SCREWS OR USE 10D COMMON NAIL OR 11 GAUGE ROOFING NAIL PER LOCATION OF SUFFICIENT LENGTH TO ACHIEVE 1 1/2 INCH MINIMUM EMBEDMENT INTO WOOD SUBSTRATE.
13. **NAIL FIN:** FOR INSTALLATION INTO METAL STUD OR APPROVED MULLION USE #8 GR. 5 SELF TAPPING SCREWS OF SUFFICIENT LENGTH TO ACHIEVE A MINIMUM OF 3 THREADS PENETRATION BEYOND METAL FRAME SUBSTRATE.
14. MINIMUM EMBEDMENT AND EDGE DISTANCE EXCLUDE WALL FINISHES, INCLUDING BUT NOT LIMITED TO STUCCO, FOAM, BRICK VENEER, AND SIDING.
15. INSTALLATION ANCHORS AND ASSOCIATED HARDWARE MUST BE MADE OF CORROSION RESISTANT MATERIAL OR HAVE A CORROSION RESISTANT COATING.
16. FOR GROUT FILLED BLOCK, DO NOT INSTALL INSTALLATION ANCHORS INTO MORTAR JOINTS. EDGE DISTANCE IS MEASURED FROM FREE EDGE OF BLOCK OR EDGE OF MORTAR JOINT INTO FACE SHELL OF BLOCK.
17. INSTALLATION ANCHORS SHALL BE INSTALLED IN ACCORDANCE WITH ANCHOR MANUFACTURER'S INSTALLATION INSTRUCTIONS, AND ANCHORS SHALL NOT BE USED IN SUBSTRATES WITH STRENGTHS LESS THAN THE MINIMUM STRENGTH SPECIFIED BY THE ANCHOR MANUFACTURER.

WINDSOR WINDOWS & DOORS

PINNACLE CLAD CASEMENT PICTURE WINDOW

IMPACT RATED

CONTINUED INSTALLATION NOTES:

18. INSTALLATION ANCHOR CAPACITIES FOR PRODUCTS HEREIN ARE BASED ON SUBSTRATE MATERIALS WITH THE FOLLOWING PROPERTIES:

A. WOOD - MINIMUM SPECIFIC GRAVITY OF 0.55.

B. CONCRETE -MINIMUM COMPRESSIVE STRENGTH OF 3000 PSI.

C. GROUT-FILLED CMU- UNIT STRENGTH CONFORMS TO ASTM C-90 WITH MINIMUM COMPRESSIVE STRENGTH OF 2000 PSI AND GROUT CONFORMS TO ASTM C 476, MINIMUM GROUT COMPRESSIVE STRENGTH OF 2000 PSI.

D. STEEL - MINIMUM YIELD STRENGTH OF 33 KSI. MINIMUM 18 GA. WALL THICKNESS.

E. ALUMINUM - MINIMUM ALLOY 6063-T5. MINIMUM WALL THICKNESS OF 1/8" (0.125").

GENERAL NOTES:

1. THE PRODUCT SHOWN HEREIN IS DESIGNED AND MANUFACTURED TO COMPLY WITH THE CURRENT FLORIDA BUILDING CODE (FBC), EXCLUDING HVHZ AND HAS BEEN EVALUATED ACCORDING TO THE FOLLOWING:

AAMA/WDMA/CSA 101/I.S.2/A440-11

ASTM E 1886-05

ASTM E 1996-06/12
2. ADEQUACY OF THE EXISTING STRUCTURAL CONCRETE/MASONRY AND 2X FRAMING AS A MAIN WIND FORCE RESISTING SYSTEM CAPABLE OF WITHSTANDING AND TRANSFERRING APPLIED PRODUCT LOADS TO THE FOUNDATION IS THE RESPONSIBILITY OF THE ENGINEER OR ARCHITECT OF RECORD FOR THE PROJECT OF INSTALLATION.
3. 1X AND 2X BUCKS (WHEN USED) SHALL BE DESIGNED AND ANCHORED TO PROPERLY TRANSFER ALL LOADS TO THE STRUCTURE. BUCK DESIGN AND INSTALLATION IS THE RESPONSIBILITY OF THE ENGINEER OR ARCHITECT OF RECORD FOR THE PROJECT OF INSTALLATION.
4. THE INSTALLATION DETAILS DESCRIBED HEREIN ARE GENERIC AND MAY NOT REFLECT ACTUAL CONDITIONS FOR A SPECIFIC SITE. IF SITE CONDITIONS CAUSE INSTALLATION TO DEVIATE FROM THE REQUIREMENTS DETAILED HEREIN, A LICENSED ENGINEER OR ARCHITECT SHALL PREPARE SITE SPECIFIC DOCUMENTS FOR USE WITH THIS DOCUMENT IN NON-HVHZ AREAS.
5. APPROVED IMPACT PROTECTIVE SYSTEM IS NOT REQUIRED ON PRODUCTS WITH "WZ3" RATING IN DESIGN PRESSURE TABLE IN AREAS REQUIRING IMPACT RESISTANCE IN WIND ZONES 3 OR LESS.
6. APPROVED IMPACT PROTECTIVE SYSTEM IS NOT REQUIRED ON PRODUCTS WITH "WZ4" RATING IN DESIGN PRESSURE TABLE IN AREAS REQUIRING IMPACT RESISTANCE IN WIND ZONES 4 OR MORE.
7. WINDOW FRAME MATERIAL: WOOD
WINDOW CLADDING MATERIAL: ALUMINUM 6063-T5
8. GLASS MEETS THE REQUIREMENTS OF ASTM E 1300 GLASS CHARTS. SEE SHEET 2 FOR GLAZING DETAILS.

TABLE OF CONTENTS		
SHEET	REVISION	SHEET DESCRIPTION
1	-	INSTALLATION & GENERAL NOTES
2	-	ELEVATIONS, ANCHOR LAYOUTS & GLAZING DETAILS
3	-	NAIL FIN INSTALLATION SECTIONS
4	-	THROUGH FRAME INSTALLATION SECTIONS
5	-	CLIP INSTALLATION SECTIONS

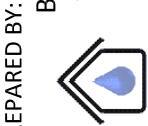
DESIGN PRESSURE TABLE							
TYP. OVERALL SIZE		DESIGN PRESSURE	CONFIGURATION	INSTALLATION METHOD	IMPACT RATING	GLAZING TYPE	WIND ZONE RATING
WIDTH	HEIGHT						
48"	72"	+65/-65 PSF	"O"	CLIP, THROUGH FRAME OR NAIL FIN	LMI AND SMI	G1	WZ4
30"	72"	+50/-50 PSF	"O"	CLIP, THROUGH FRAME OR NAIL FIN	LMI AND SMI	G2	WZ3
48"	72"	+50/-50 PSF	"O"	CLIP, THROUGH FRAME OR NAIL FIN	LMI AND SMI	G3	WZ3



WINDSOR WINDOWS & DOORS
900 S. 19TH STREET.
WEST DES MOINES, IA 50265
PH: (515)223-6660 FAX: (515)224-1938

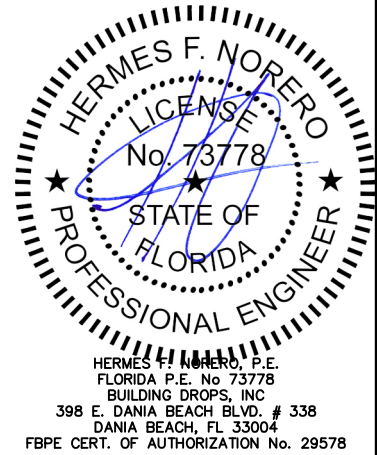
TITLE: PINNACLE CLAD CASEMENT PICTURE (IMPACT)

INSTALLATION AND GENERAL NOTES



PREPARED BY: BUILDING DROPS, INC.
398 E. DANIA BEACH BLVD., STE. 338
DANIA BEACH, FL 33004
PH: (954)399-8478
FAX: (954)744-4738
WEB: www.buildingdrops.com

THIS DOCUMENT IS THE PROPERTY OF BUILDING DROPS, INC. AND SHALL NOT BE REPRODUCED IN WHOLE OR PART WITHOUT WRITTEN CONSENT OF BUILDING DROPS, INC. ALTERATIONS, ADDITIONS, HIGHLIGHTING, OR OTHER MARKINGS TO THIS DOCUMENT ARE NOT PERMITTED AND INVALIDATE OUR CERTIFICATION.



FL #: FL13643

DATE: 08.30.17

DWG. BY: RV
CHK. BY: HFN

SCALE: NTS

DWG. #: WWD014

SHEET: 1 OF 5

WINDSOR WINDOWS
& DOORS

900 S. 19TH STREET.
WEST DES MOINES, IA 50265
PH: (515)223-6660 FAX: (515)224-1938

TITLE: PINNACLE CLAD CASEMENT
PICTURE (IMPACT)

ELEVATIONS, ANCHOR LAYOUT
& GLAZING DETAIL

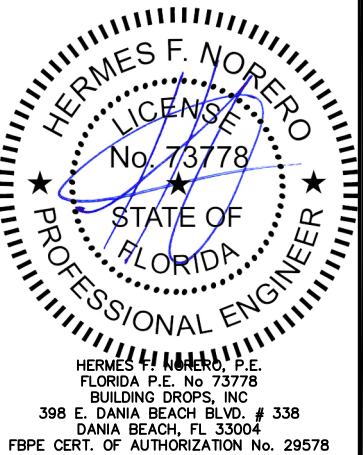
PREPARED BY:
BUILDING DROPS, INC.

398 E. DANIA BEACH BLVD., STE. 338
DANIA BEACH, FL 33004
PH: (954)399-8478
FAX: (954)744-4738
WEB: www.buildingdrops.com



REMARKS	BY	DATE

THIS DOCUMENT IS THE PROPERTY OF BUILDING DROPS, INC.
AND SHALL NOT BE REPRODUCED IN WHOLE OR PART
WITHOUT WRITTEN CONSENT OF BUILDING DROPS, INC.
ALTERATIONS, ADDITIONS, HIGHLIGHTING, OR OTHER
MARKINGS TO THIS DOCUMENT ARE NOT PERMITTED AND
INVALIDATE OUR CERTIFICATION.



FL #:

FL13643

DATE: 08.30.17

DWG. BY: RV
CHK. BY: HFN

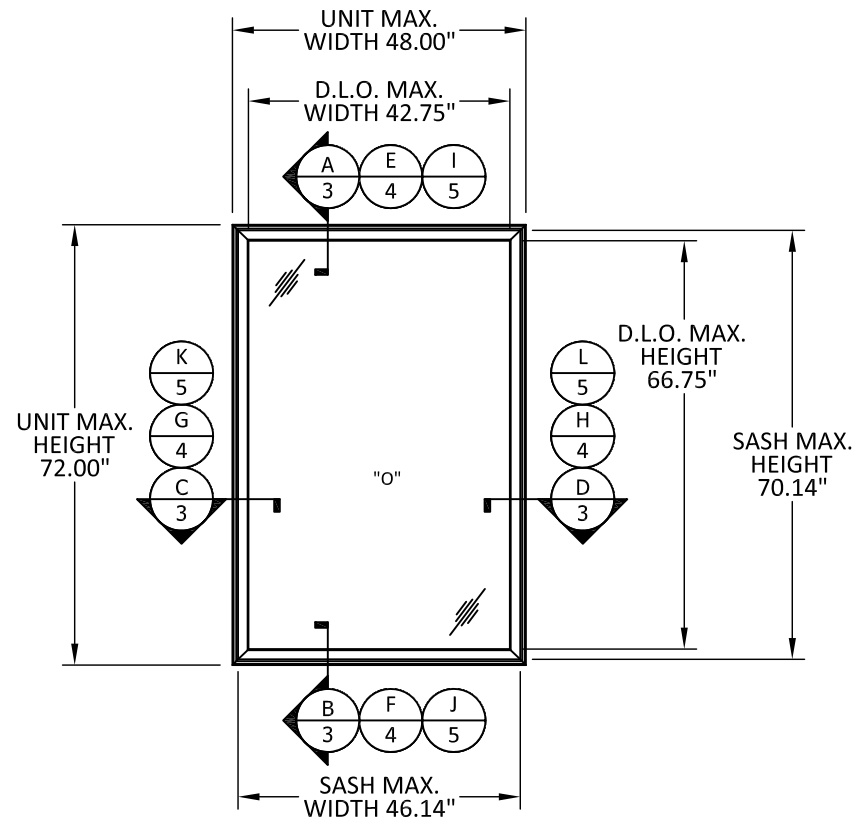
SCALE: NTS

DWG. #: WWD014

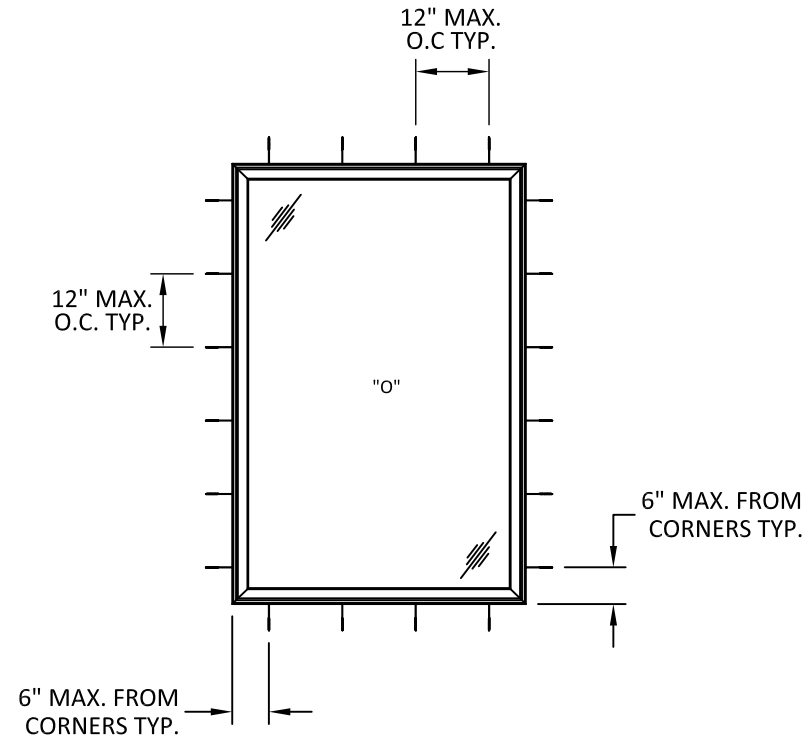
SHEET:

2

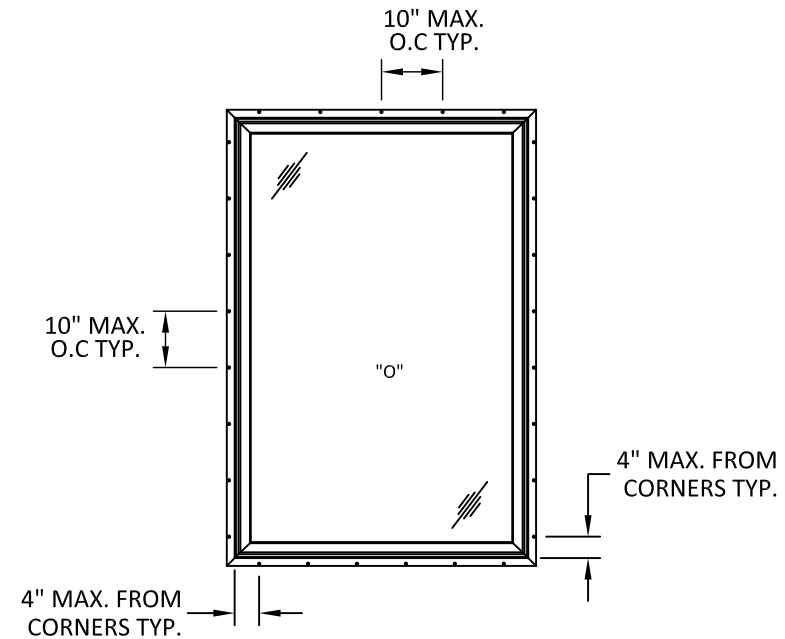
OF 5



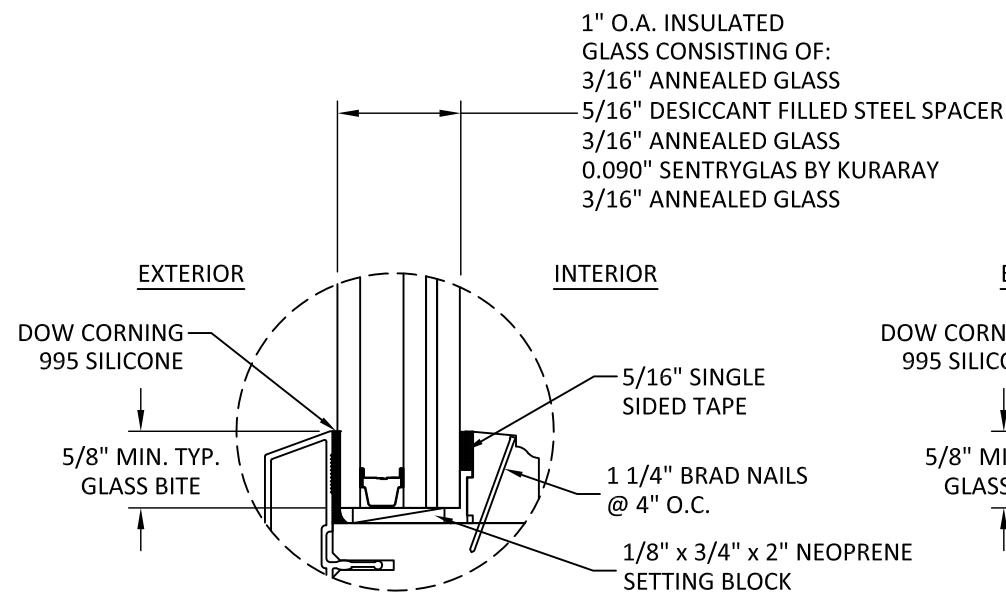
TYPICAL ELEVATION
CASEMENT PICTURE



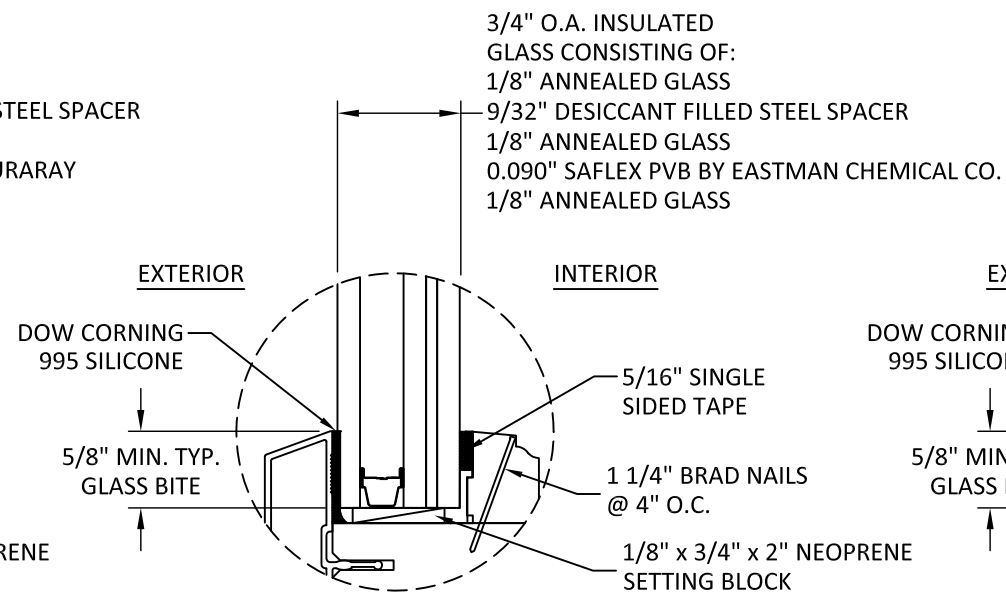
ANCHOR LAYOUT
CLIP OR THROUGH FRAME INSTALLATION



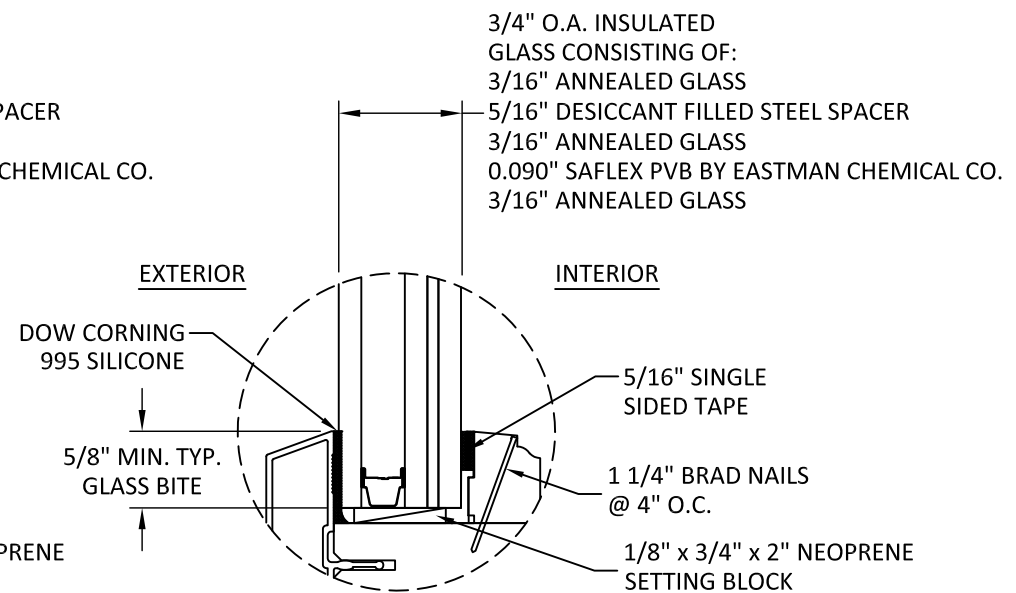
ANCHOR LAYOUT
NAIL FIN INSTALLATION



GLAZING DETAIL G1



GLAZING DETAIL G2



GLAZING DETAIL G3

NOTE:
INSTALLATIONS HIGHER THAN 30'
ABOVE GRADE SHALL BE SAFETY
GLAZED IN ACCORDANCE WITH FBC
REQUIREMENTS.

TITLE: PINNACLE CLAD CASEMENT
PICTURE (IMPACT)

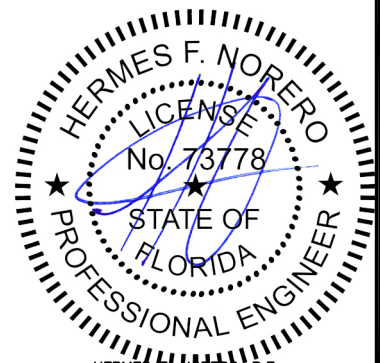
NAIL FIN INSTALLATION
SECTIONS

PREPARED BY:
BUILDING DROPS, INC.
398 E. DANIA BEACH BLVD., STE. 338
DANIA BEACH, FL 33004
PH: (954)399-8478
FAX: (954)744-4738
WEB: www.buildingdrops.com



REMARKS	BY	DATE

THIS DOCUMENT IS THE PROPERTY OF BUILDING DROPS, INC. AND SHALL NOT BE REPRODUCED IN WHOLE OR PART WITHOUT WRITTEN CONSENT OF BUILDING DROPS, INC. ALTERATIONS, ADDITIONS, HIGHLIGHTING, OR OTHER MARKINGS TO THIS DOCUMENT ARE NOT PERMITTED AND INVALIDATE OUR CERTIFICATION.



HERMES F. NORERO, P.E.
FLORIDA P.E. No. 73778
BUILDING DROPS, INC.
398 E. DANIA BEACH BLVD. # 338
DANIA BEACH, FL 33004
FBPE CERT. OF AUTHORIZATION No. 29578

FL #:
FL13643

DATE: **08.30.17**

DWG. BY: **RV** CHK. BY: **HFN**

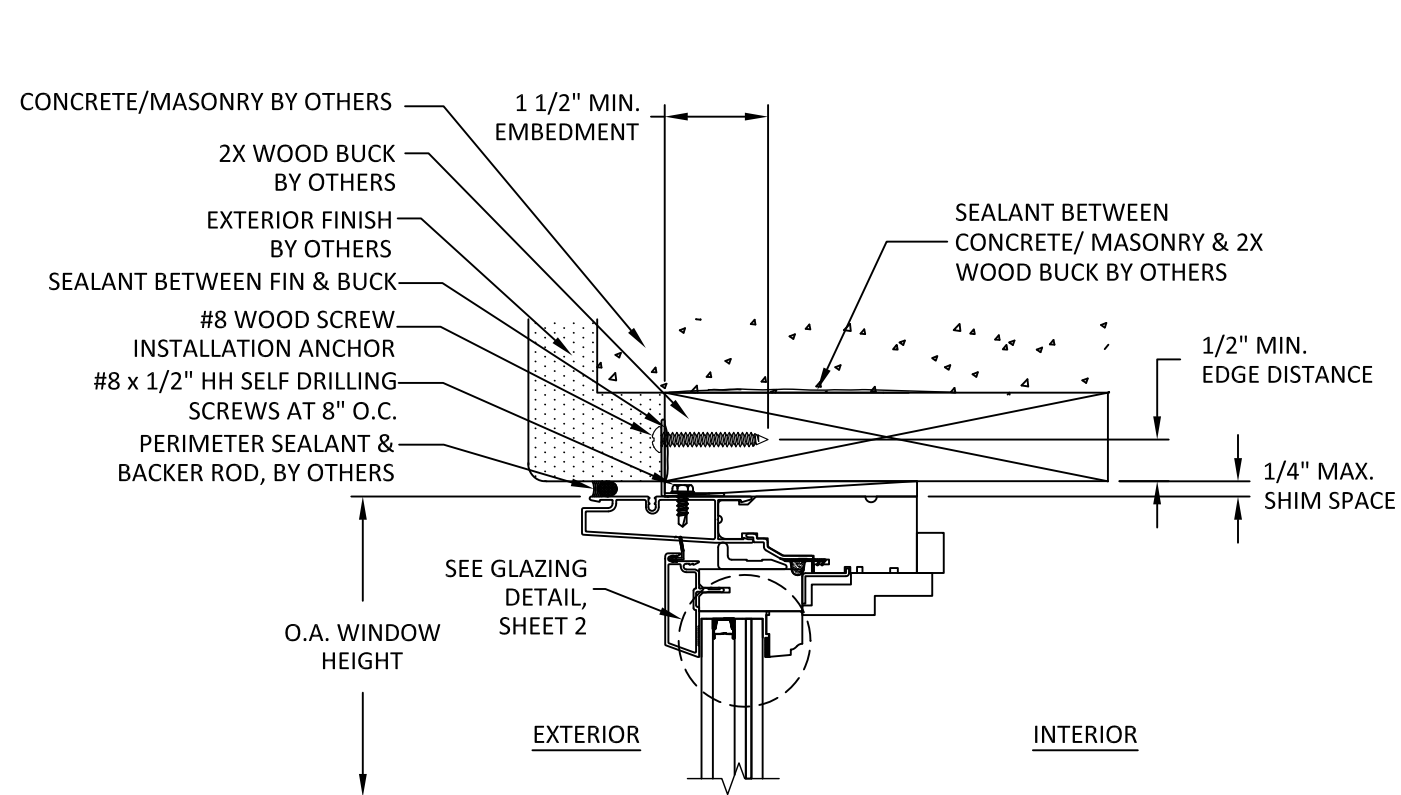
SCALE: **NTS**

DWG. #: **WWD014**

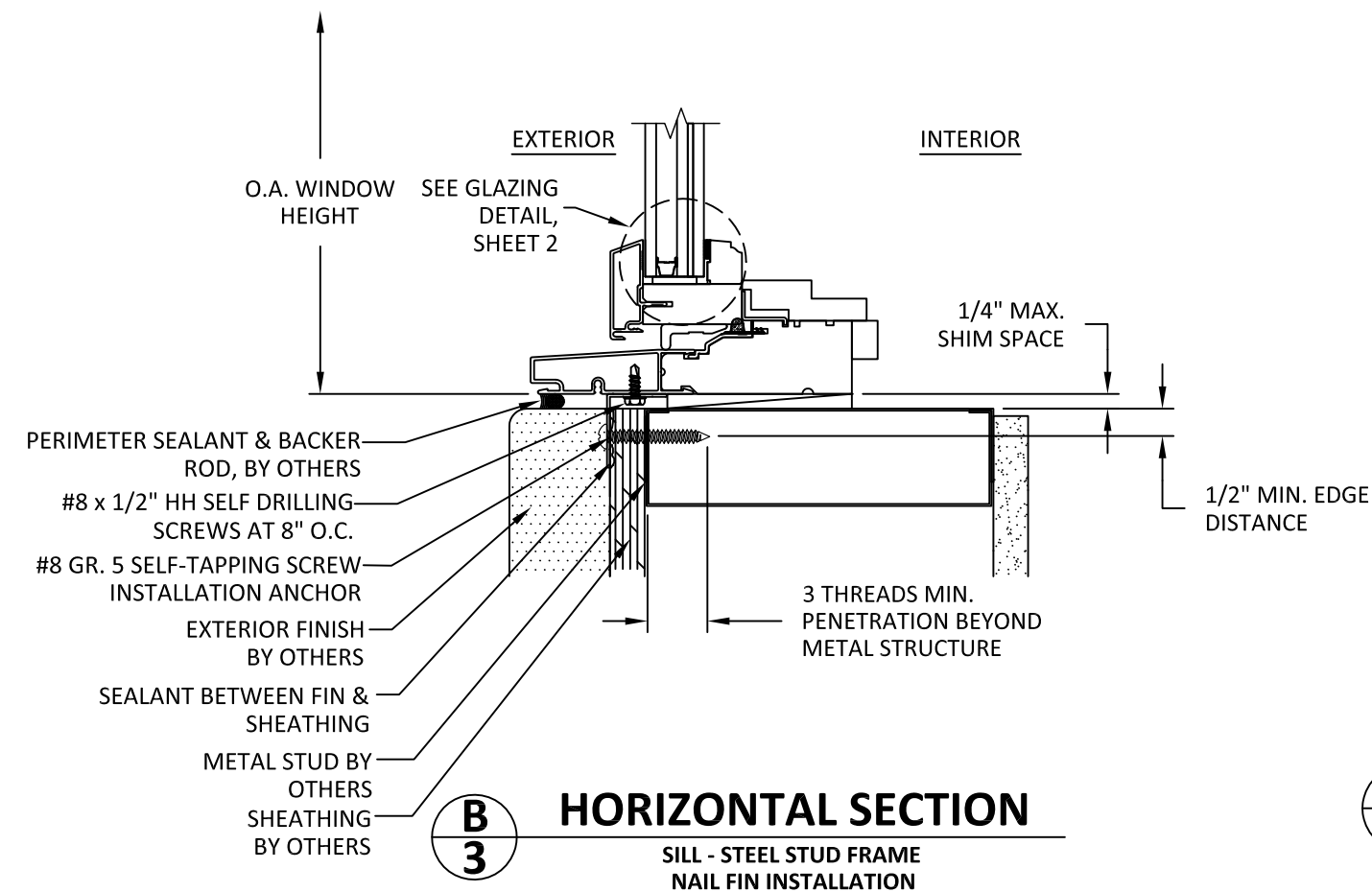
SHEET:

3

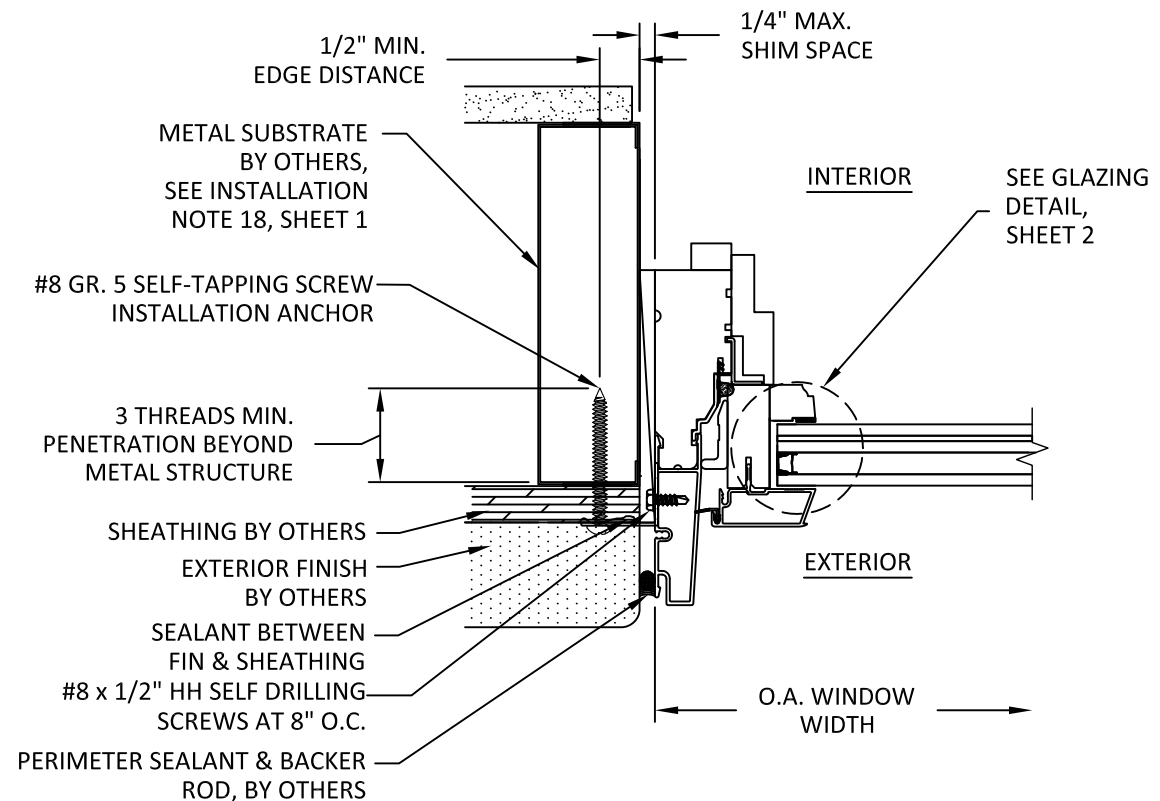
OF 5



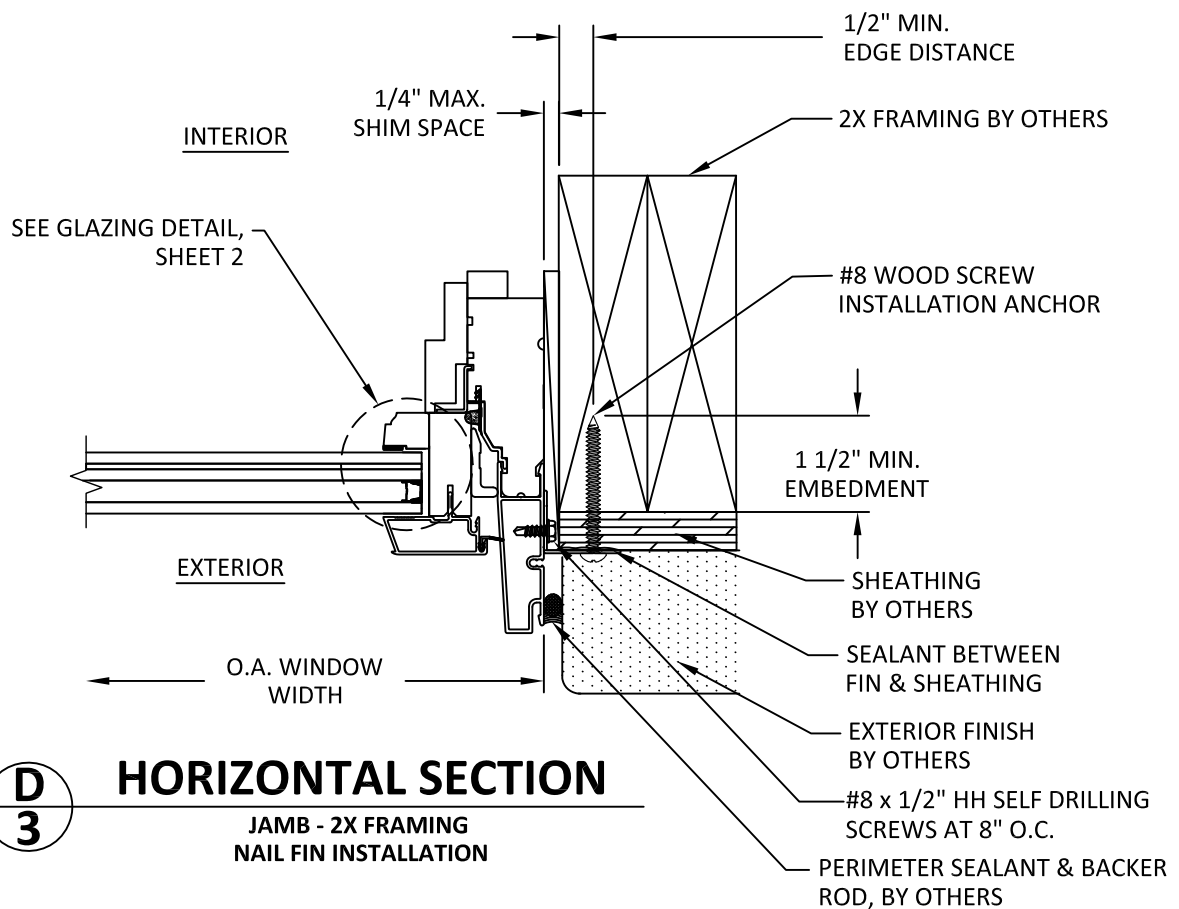
A
3 **VERTICAL SECTION**
HEAD - 2X WOOD BUCK
NAIL FIN INSTALLATION



B
3 **HORIZONTAL SECTION**
SILL - STEEL STUD FRAME
NAIL FIN INSTALLATION



C
3 **HORIZONTAL SECTION**
JAMB - METAL FRAME
NAIL FIN INSTALLATION



D
3 **HORIZONTAL SECTION**
JAMB - 2X FRAMING
NAIL FIN INSTALLATION



WINDSOR WINDOWS
& DOORS

900 S. 19TH STREET.
WEST DES MOINES, IA 50265
PH: (515)223-6660 FAX: (515)224-1938

TITLE: PINNACLE CLAD CASEMENT
PICTURE (IMPACT)

THROUGH FRAME
INSTALLATION SECTIONS

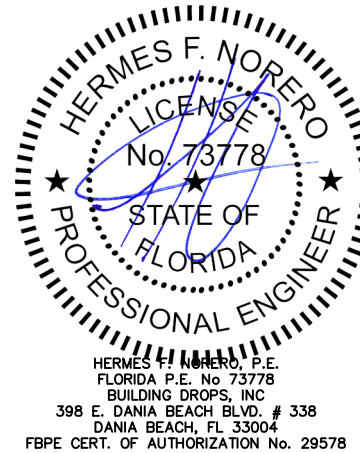
PREPARED BY:
BUILDING DROPS, INC.

398 E. DANIA BEACH BLVD., STE. 338
DANIA BEACH, FL 33004
PH: (954)399-8478
FAX: (954)744-4738
WEB: www.buildingdrops.com



REMARKS	BY	DATE

THIS DOCUMENT IS THE PROPERTY OF BUILDING DROPS, INC. AND SHALL NOT BE REPRODUCED IN WHOLE OR PART WITHOUT WRITTEN CONSENT OF BUILDING DROPS, INC. ALTERATIONS, ADDITIONS, HIGHLIGHTING, OR OTHER MARKINGS TO THIS DOCUMENT ARE NOT PERMITTED AND INVALIDATE OUR CERTIFICATION.



FL #:

FL13643

DATE: 08.30.17

DWG. BY: RV
CHK. BY: HFN

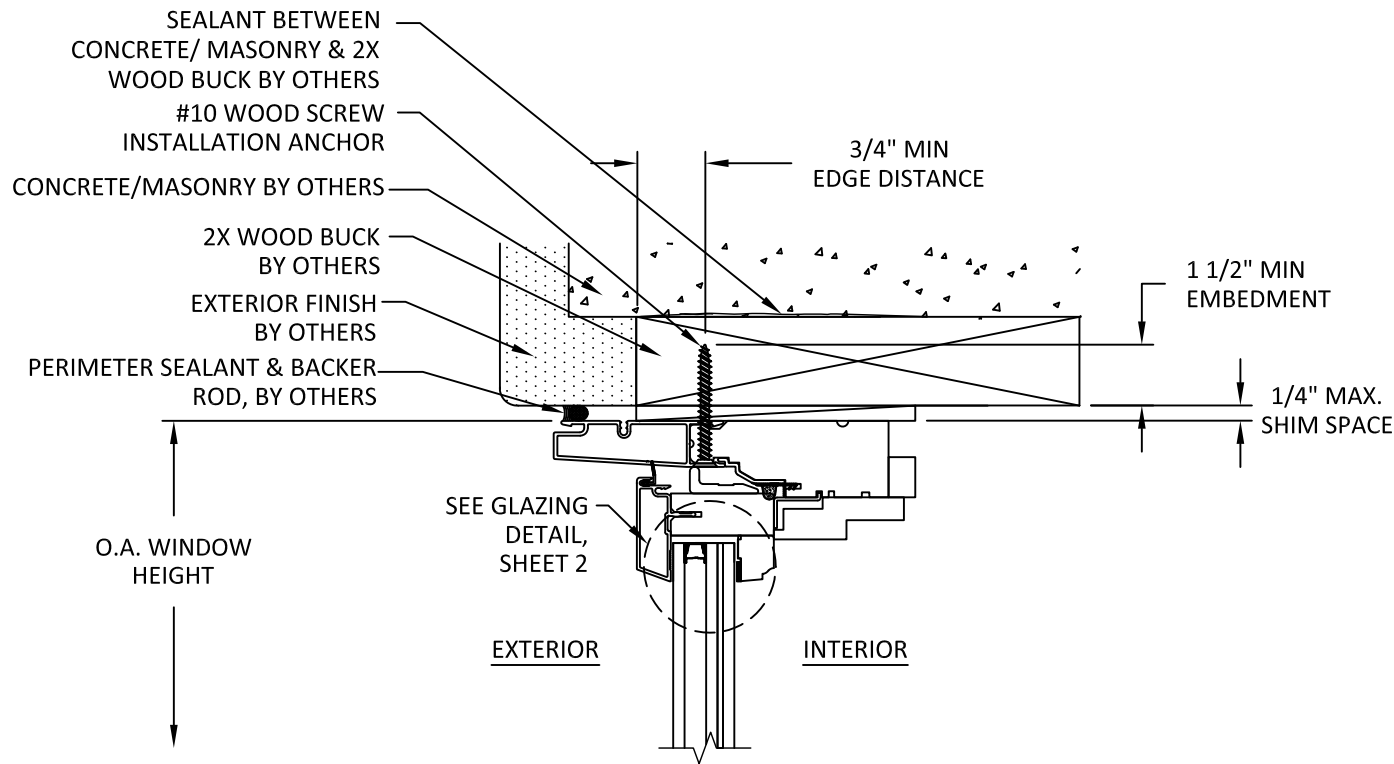
SCALE: NTS

DWG. #: WWD014

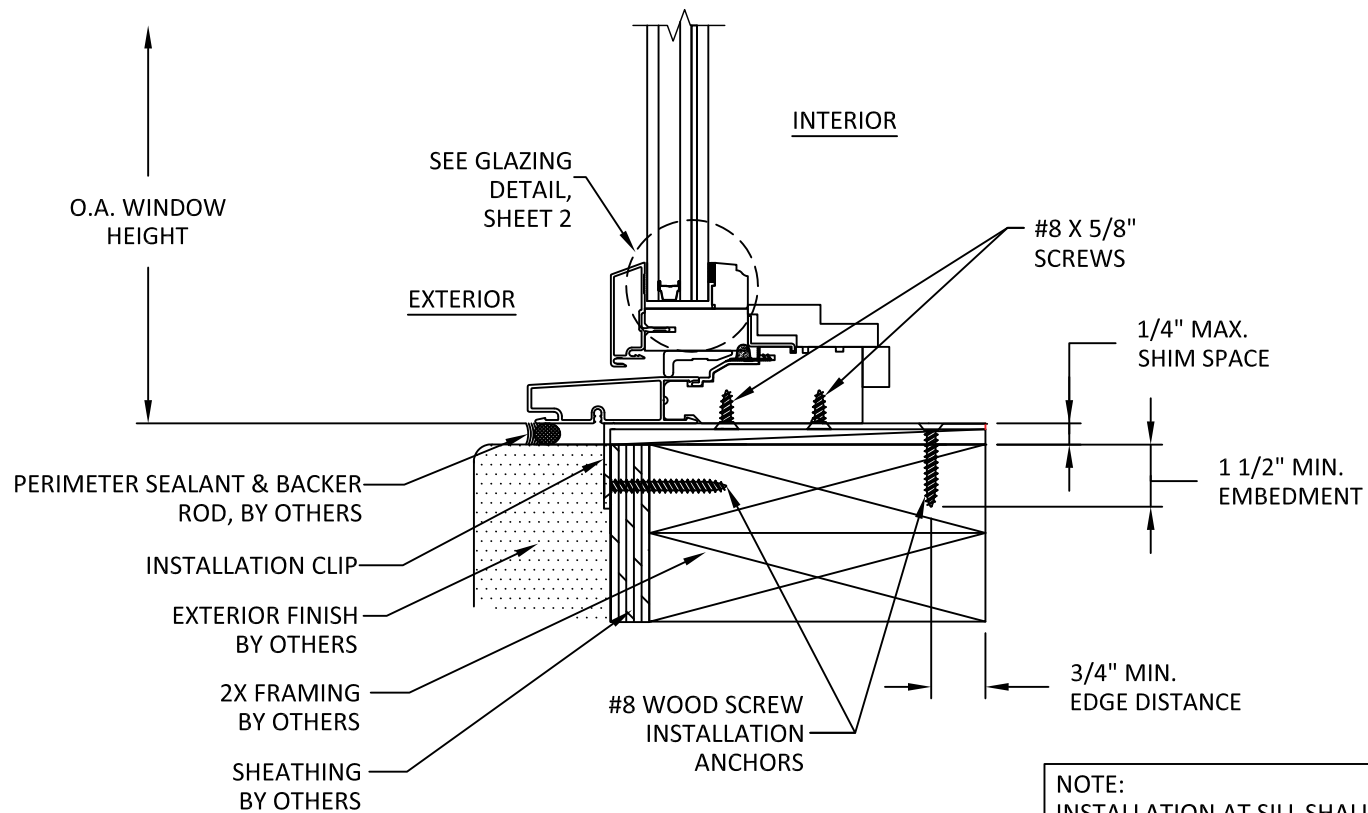
SHEET:

4

OF 5

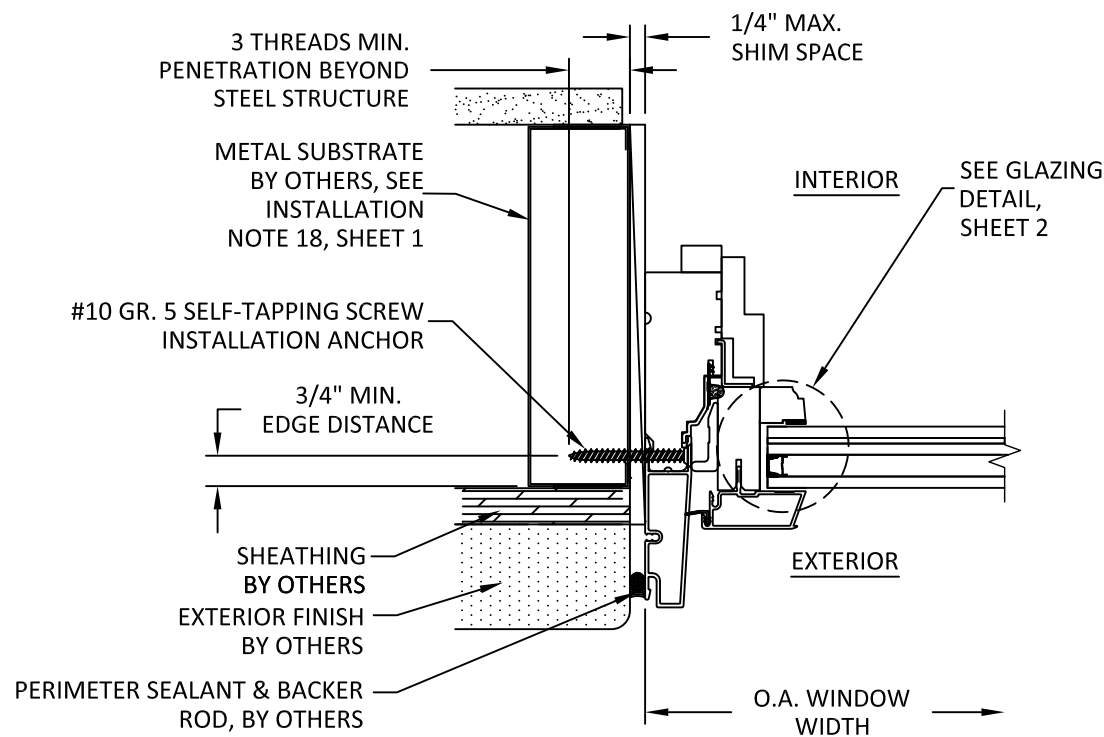


E
4 VERTICAL SECTION
HEAD - 2X WOOD BUCK
THROUGH FRAME INSTALLATION

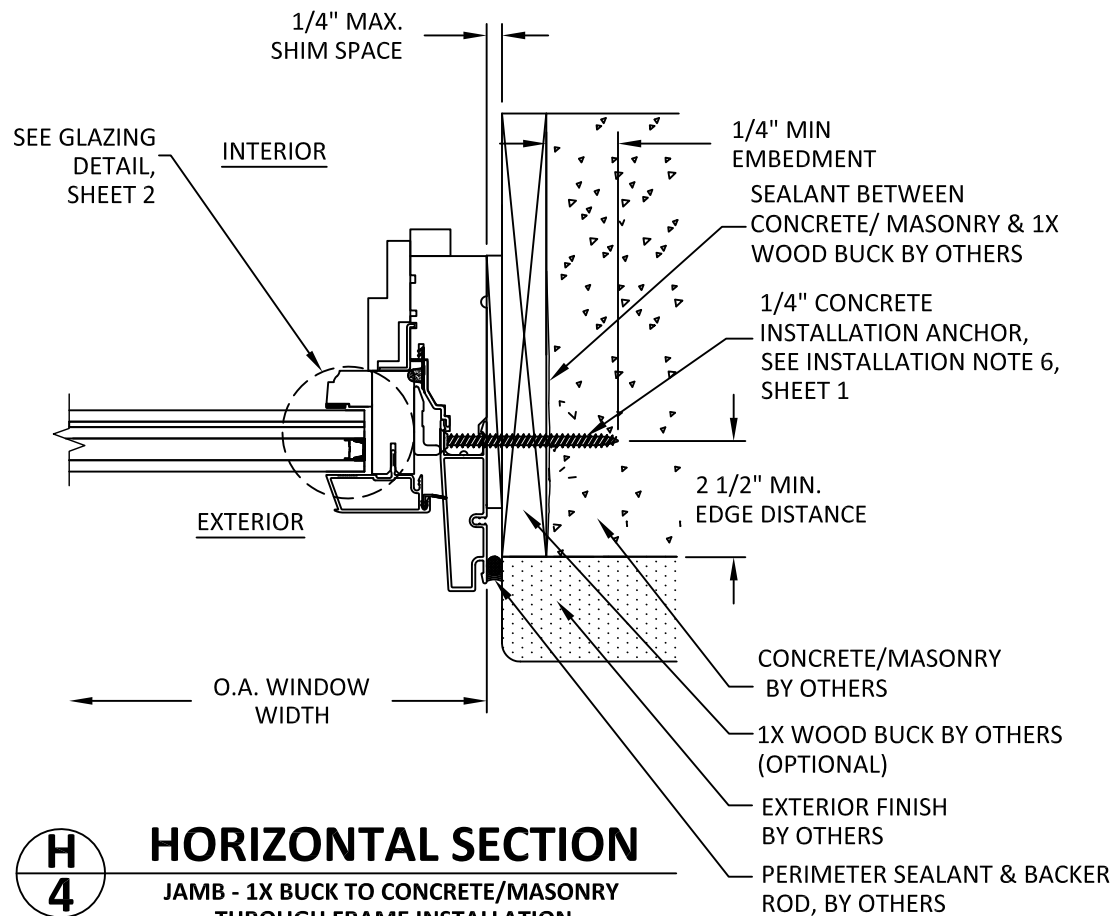


F
4 VERTICAL SECTION
SILL - 2X FRAMING
CLIP INSTALLATION

NOTE:
INSTALLATION AT SILL SHALL
USE ONLY USE CLIPS (STANDARD
OR ALTERNATE). THROUGH
FRAME INSTALLATION NOT
PERMITTED.



G
4 HORIZONTAL SECTION
JAMB - METAL STUD FRAME
THROUGH FRAME INSTALLATION



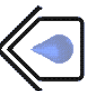
H
4 HORIZONTAL SECTION
JAMB - 1X BUCK TO CONCRETE/MASONRY
THROUGH FRAME INSTALLATION

TITLE: PINNACLE CLAD CASEMENT
PICTURE (IMPACT)

CLIP INSTALLATION SECTIONS

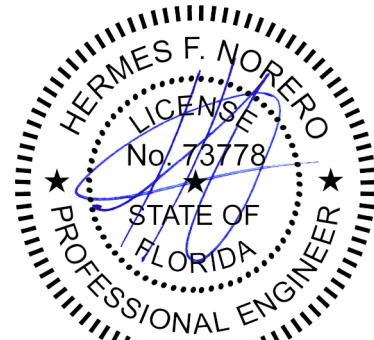
PREPARED BY:
BUILDING DROPS, INC.

398 E. DANIA BEACH BLVD., STE. 338
DANIA BEACH, FL 33004
PH: (954)399-8478
FAX: (954)744-4738
WEB: www.buildingdrops.com



REMARKS	BY	DATE

THIS DOCUMENT IS THE PROPERTY OF BUILDING DROPS, INC. AND SHALL NOT BE REPRODUCED IN WHOLE OR PART WITHOUT WRITTEN CONSENT OF BUILDING DROPS, INC. ALTERATIONS, ADDITIONS, HIGHLIGHTING, OR OTHER MARKINGS TO THIS DOCUMENT ARE NOT PERMITTED AND INVALIDATE OUR CERTIFICATION.



HERMES F. NORERO, P.E.
FLORIDA P.E. No. 73778
BUILDING DROPS, INC.
398 E. DANIA BEACH BLVD. # 338
DANIA BEACH, FL 33004
FBPE CERT. OF AUTHORIZATION No. 29578

FL #:
FL13643

DATE: **08.30.17**

DWG. BY: **RV** CHK. BY: **HFN**

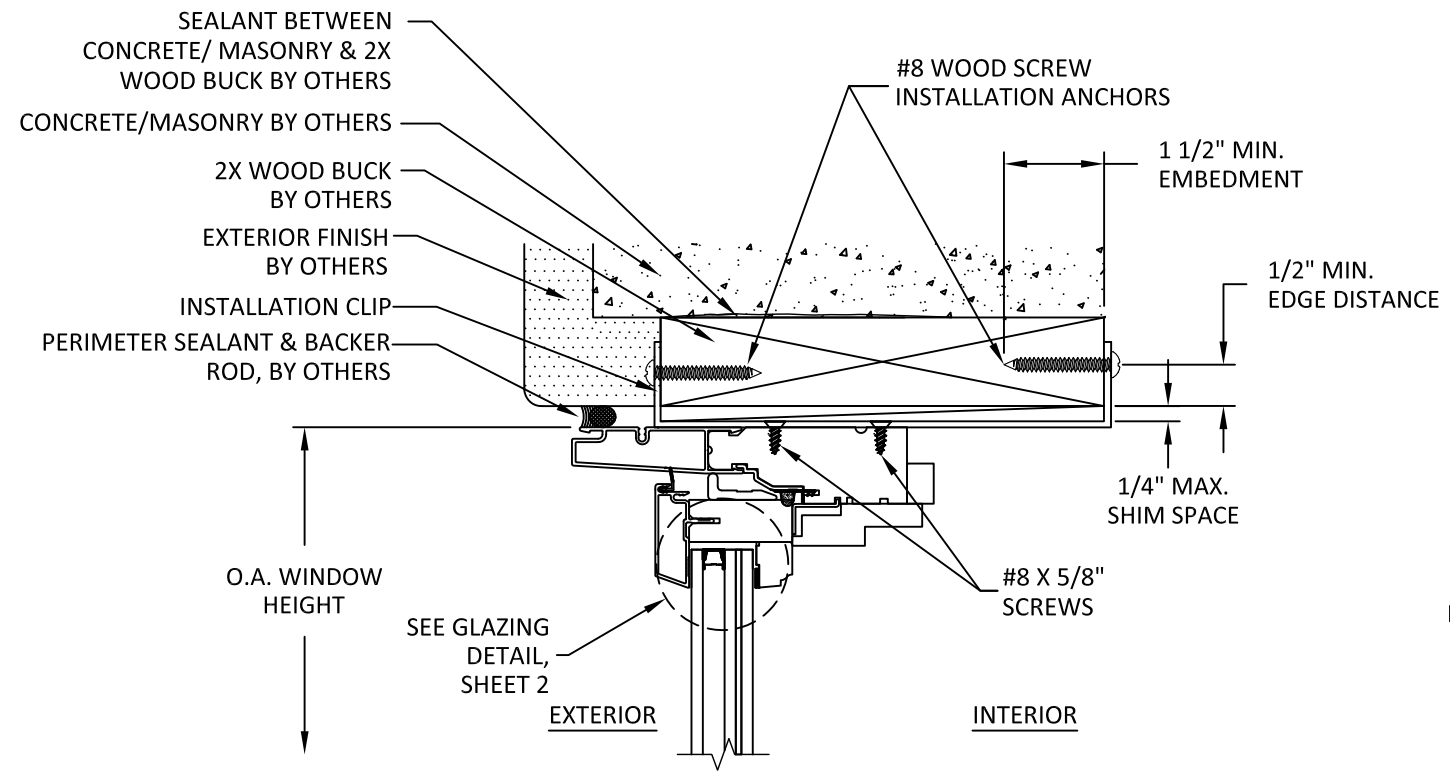
SCALE: **NTS**

DWG. #: **WWD014**

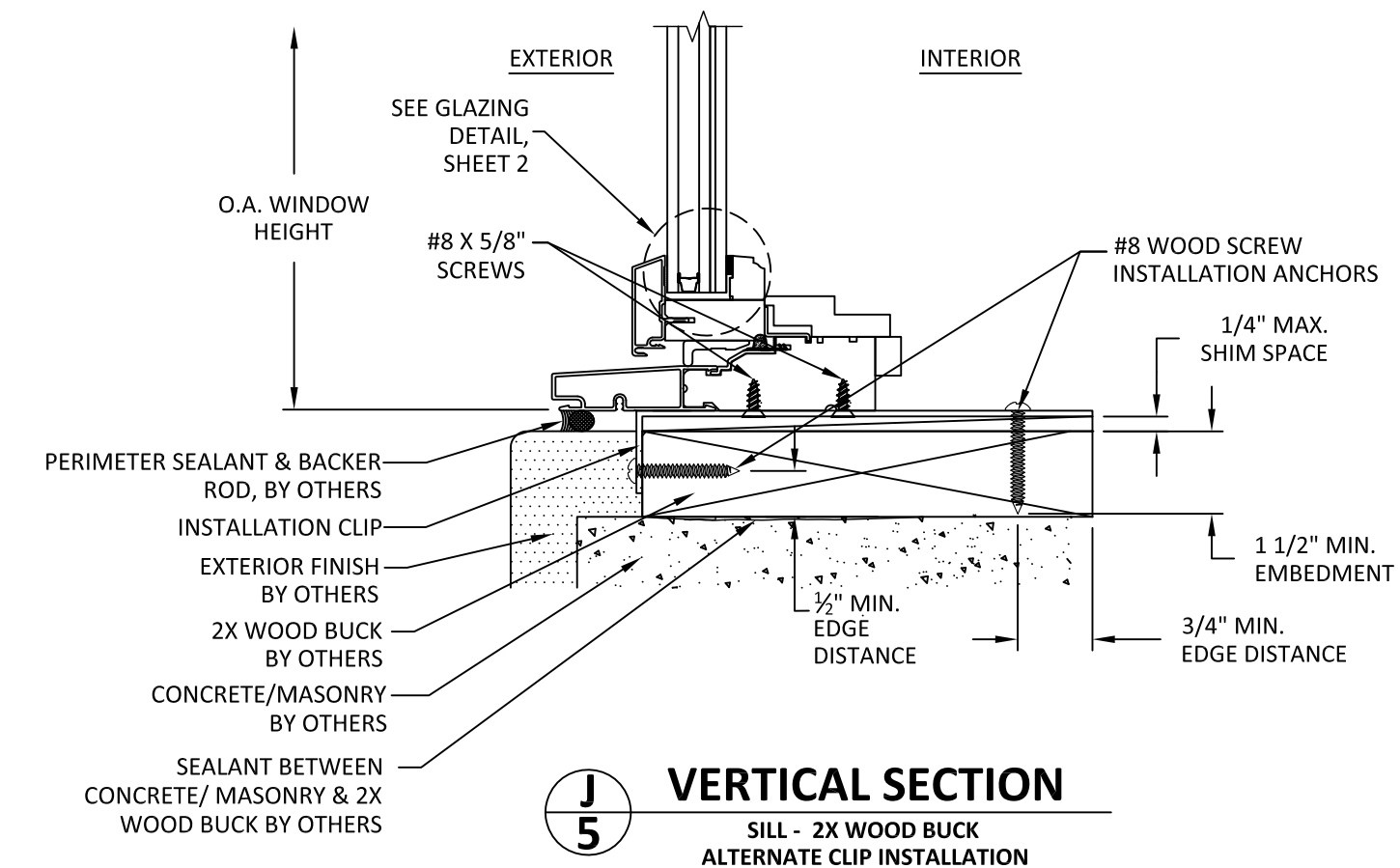
SHEET:

5

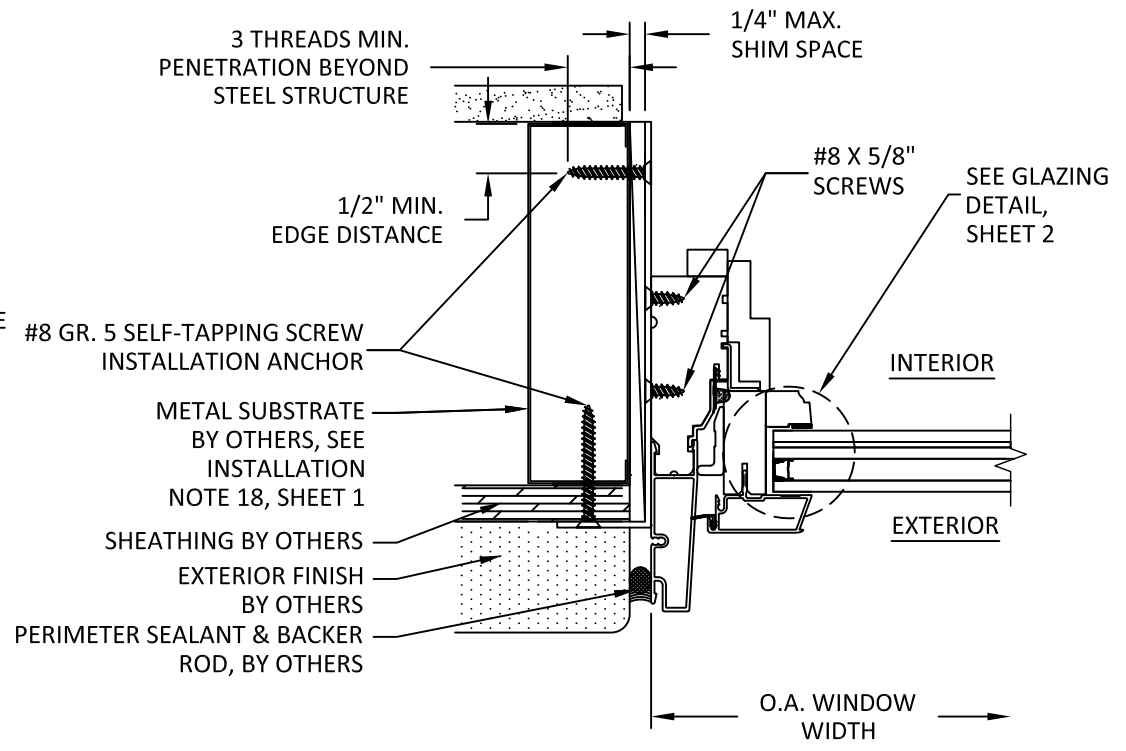
OF 5



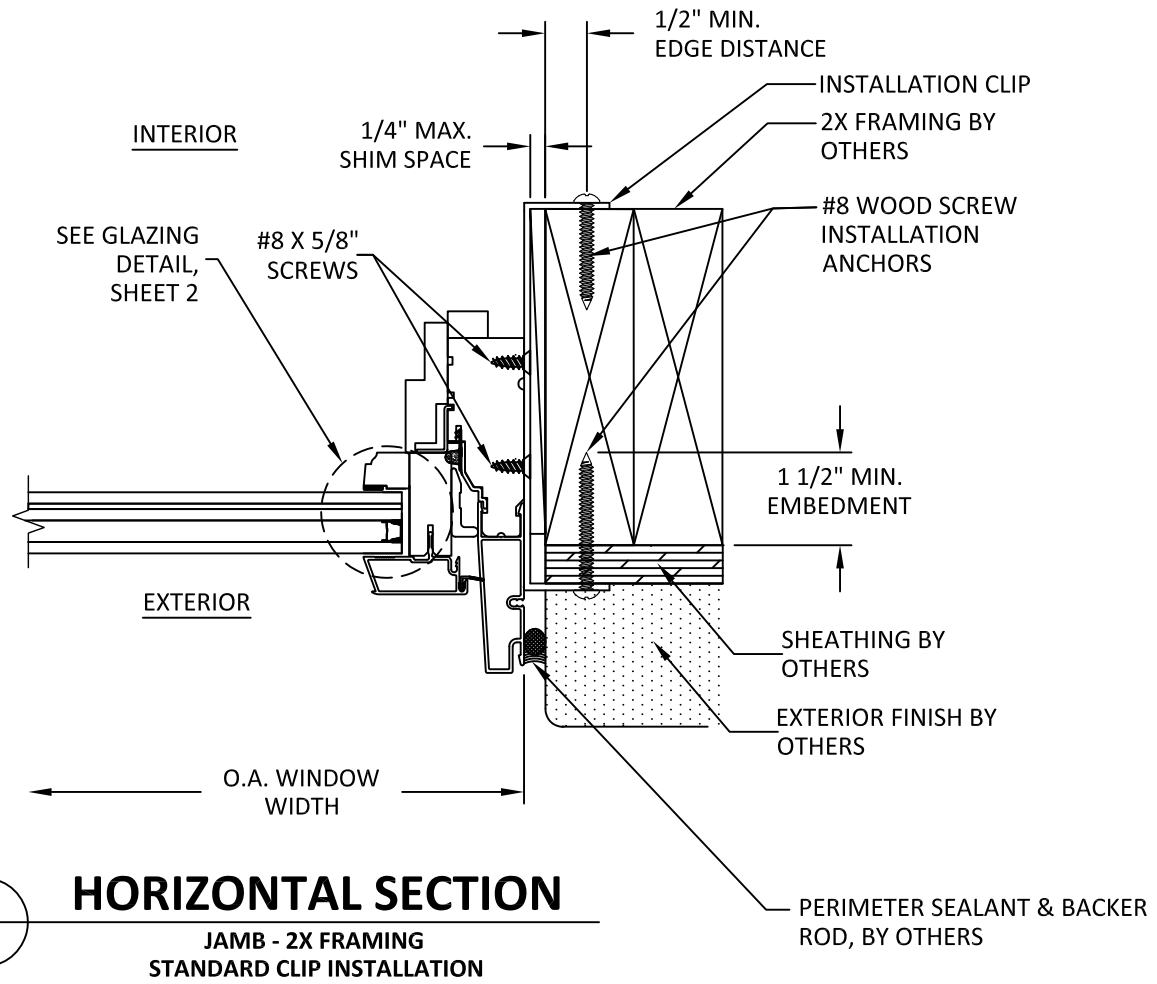
**I
5** **VERTICAL SECTION**
HEAD - 2X WOOD BUCK
STANDARD CLIP INSTALLATION



**J
5** **VERTICAL SECTION**
SILL - 2X WOOD BUCK
ALTERNATE CLIP INSTALLATION



**K
5** **HORIZONTAL SECTION**
JAMB - METAL SUBSTRATE
ALTERNATE CLIP INSTALLATION



**L
5** **HORIZONTAL SECTION**
JAMB - 2X FRAMING
STANDARD CLIP INSTALLATION