

s:\projects\windsor windows and doors\fbc-18-0227 -fbc submittal - pinnacle clad inswing door (111573).dwg\Impact\ww0033.dwg

s:\projects\windsor windows and doors\fbc-18-0227 -fbc submittal - pinnacle clad inswing door (111573).dwg\Impact\ww0033.dwg

INSTALLATION NOTES:

1. ONE (1) INSTALLATION ANCHOR IS REQUIRED AT EACH ANCHOR LOCATION SHOWN.
2. THE NUMBER OF INSTALLATION ANCHORS DEPICTED IS THE MINIMUM NUMBER OF ANCHORS TO BE USED FOR PRODUCT INSTALLATION OF THE MAXIMUM SIZE LISTED.
3. INSTALL INDIVIDUAL INSTALLATION ANCHORS WITHIN A TOLERANCE OF ±1/2 INCH BASED ON QUANTITIES IN DP CHARTS NOT TO EXCEED THE DEPICTED LOCATION & SPACING IN THE ANCHOR LAYOUT DETAILS (I.E., WITHOUT CONSIDERATION OF TOLERANCES). TOLERANCES ARE NOT CUMULATIVE FROM ONE INSTALLATION ANCHOR TO THE NEXT
4. SHIM AS REQUIRED AT EACH INSTALLATION ANCHOR WITH LOAD BEARING SHIM(S). MAXIMUM ALLOWABLE SHIM STACK TO BE 1/4 INCH. SHIM WHERE SPACE OF 1/16 INCH OR GREATER OCCURS. SHIM(S) SHALL BE CONSTRUCTED OF HIGH DENSITY PLASTIC OR BETTER.
5. **THROUGH FRAME:** FOR INSTALLATION INTO WOOD FRAMING USE #10 WOOD SCREWS OF SUFFICIENT LENGTH TO ACHIEVE 1 1/2" MINIMUM EMBEDMENT INTO WOOD SUBSTRATE.
6. **THROUGH FRAME:** FOR INSTALLATION THROUGH 1X BUCK TO CONCRETE/MASONRY, OR DIRECTLY INTO CONCRETE/MASONRY, USE 1/4" DIAMETER ITW TAPCONS, ELCO ULTRACONS, ELCO CRETE-FLEX OR HILTI KWIK-CON II OF SUFFICIENT LENGTH TO ACHIEVE 1 1/4" MINIMUM EMBEDMENT.
7. **THROUGH FRAME:** FOR INSTALLATION INTO METAL STUD OR APPROVED MULLION USE #10 GR. 5 SELF TAPPING SCREWS OF SUFFICIENT LENGTH TO ACHIEVE A MINIMUM OF 3 THREADS PENETRATION BEYOND METAL FRAME SUBSTRATE.
8. CLIPS SHALL BE FASTENED TO THE WINDOW FRAME WITH (2) #8 X 5/8" SCREWS. CLIPS ARE 20 GAUGE (0.063" THICKNESS) F'y=33 KSI MIN STEEL WITH OVERALL DIMENSIONS OF 1.5" WIDE, 7.813" ALONG THE LONG LEG, AND 1.942" ALONG THE SHORT LEG.
9. **CLIP ANCHOR:** FOR INSTALLATION INTO METAL STUD USE (2) #8 GR. 5 SELF-TAPPING SCREWS PER CLIP OF SUFFICIENT LENGTH TO ACHIEVE 3 THREADS MINIMUM PENETRATION BEYOND THE METAL STRUCTURE.
10. **CLIP ANCHOR:** FOR INSTALLATION INTO WOOD FRAMING USE (2) #8 WOOD SCREWS PER CLIP OF SUFFICIENT LENGTH TO ACHIEVE 1 1/2 INCH MINIMUM EMBEDMENT INTO WOOD SUBSTRATE.
11. **NAIL FIN:** FOR INSTALLATION INTO WOOD FRAMING USE #8 WOOD SCREWS OR USE 10D COMMON NAIL OR 11 GAUGE ROOFING NAIL PER LOCATION OF SUFFICIENT LENGTH TO ACHIEVE 1 1/2 INCH MINIMUM EMBEDMENT INTO WOOD SUBSTRATE.
12. NAIL FIN: FOR INSTALLATION INTO METAL STUD USE #8 GR.5 SELF-TAPPING SCREWS OF SUFFICIENT LENGTH TO ACHIEVE 3 THREADS MINIMUM PENETRATION BEYOND THE METAL STRUCTURE.
13. MINIMUM EMBEDMENT AND EDGE DISTANCE EXCLUDE WALL FINISHES, INCLUDING BUT NOT LIMITED TO STUCCO, FOAM, BRICK VENEER, AND SIDING.
14. INSTALLATION ANCHORS AND ASSOCIATED HARDWARE MUST BE MADE OF CORROSION RESISTANT MATERIAL OR HAVE A CORROSION RESISTANT COATING.
15. FOR GROUT FILLED BLOCK, DO NOT INSTALL INSTALLATION ANCHORS INTO MORTAR JOINTS. EDGE DISTANCE IS MEASURED FROM FREE EDGE OF BLOCK OR EDGE OF MORTAR JOINT INTO FACE SHELL OF BLOCK.
16. INSTALLATION ANCHORS SHALL BE INSTALLED IN ACCORDANCE WITH ANCHOR MANUFACTURER'S INSTALLATION INSTRUCTIONS, AND ANCHORS SHALL NOT BE USED IN SUBSTRATES WITH STRENGTHS LESS THAN THE MINIMUM STRENGTH SPECIFIED BY THE ANCHOR MANUFACTURER.

WINDSOR WINDOWS & DOORS

PINNACLE CLAD INSWING DOOR

(IMPACT)

GENERAL NOTES:

1. THE PRODUCT SHOWN HEREIN IS DESIGNED AND MANUFACTURED TO COMPLY WITH THE CURRENT FLORIDA BUILDING CODE (FBC), EXCLUDING HVHZ AND HAS BEEN EVALUATED ACCORDING TO THE FOLLOWING:
  - AAMA/WDMA/CSA 101/I.S.1/A440-11
  - ASTM E1886-13a
  - ASTM E1996-14a
2. ADEQUACY OF THE EXISTING STRUCTURAL CONCRETE/MASONRY AND 2X FRAMING AS A MAIN WIND FORCE RESISTING SYSTEM CAPABLE OF WITHSTANDING AND TRANSFERRING APPLIED PRODUCT LOADS TO THE FOUNDATION IS THE RESPONSIBILITY OF THE ENGINEER OR ARCHITECT OF RECORD FOR THE PROJECT OF INSTALLATION.
3. 1X AND 2X BUCKS (WHEN USED) SHALL BE DESIGNED AND ANCHORED TO PROPERLY TRANSFER ALL LOADS TO THE STRUCTURE. BUCK DESIGN AND INSTALLATION IS THE RESPONSIBILITY OF THE ENGINEER OR ARCHITECT OF RECORD FOR THE PROJECT OF INSTALLATION.
4. THE INSTALLATION DETAILS DESCRIBED HEREIN ARE GENERIC AND MAY NOT REFLECT ACTUAL CONDITIONS FOR A SPECIFIC SITE. IF SITE CONDITIONS CAUSE INSTALLATION TO DEVIATE FROM THE REQUIREMENTS DETAILED HEREIN, A LICENSED ENGINEER OR ARCHITECT SHALL PREPARE SITE SPECIFIC DOCUMENTS FOR USE WITH THIS DOCUMENT.
5. APPROVED IMPACT PROTECTIVE SYSTEM **IS NOT REQUIRED** ON THIS PRODUCT IN WIND ZONES 3 OR LESS.
6. APPROVED IMPACT PROTECTIVE SYSTEM **IS REQUIRED** ON THIS PRODUCT IN WIND ZONE 4.
7. DOOR FRAME MATERIAL:

7.1. WOOD

7.2. ALUMINUM 6063-T5
8. DISSIMILAR METALS INCLUDING FASTENERS THAT MAY COME INTO CONTACT WITH ALUMINUM COMPONENTS SHALL BE PROTECTED IN ACCORDANCE WITH THE FBC.
9. DESIGNATIONS "X" AND "O" STAND FOR THE FOLLOWING:

X: OPERABLE PANEL

O: STATIONARY PANEL

TABLE OF CONTENTS		
SHEET	REVISION	SHEET DESCRIPTION
1	-	INSTALLATION & GENERAL NOTES
2	-	ELEVATIONS & ANCHOR LAYOUTS
3	-	ELEVATIONS & ANCHOR LAYOUTS
4	-	ELEVATIONS & ANCHOR LAYOUTS
5	-	INSTALLATION DETAILS
6	-	INSTALLATION DETAILS
7	-	INSTALLATION DETAILS
8	-	GLAZING DETAILS

DESIGN PRESSURE TABLE					
TYP. OVERALL SIZE		DESIGN PRESSURE	CONFIGURATION	MISSILE IMPACT RATING	WIND ZONE
WIDTH	HEIGHT				
75"	95.375"	+50/-50 PSF	XX	MISSILE SIZE D	WZ3
75"	95.375"	+50/-50 PSF	OX		



WINDSOR WINDOWS & DOORS  
900 S. 19TH STREET.  
WEST DES MOINES, IA 50265  
PH: (515)223-6660 FAX: (515)224-1938

TITLE: PINNACLE CLAD INSWING DOOR (IMPACT)

INSTALLATION & GENERAL NOTES

PREPARED BY: BUILDING DROPS, INC.

398 E. DANIA BEACH BLVD., STE. 338  
DANIA BEACH, FL 33004  
PH: (954)399-8478  
FAX: (954)744-4738  
WEB: www.buildingdrops.com

REMARKS	BY	DATE

THIS DOCUMENT IS THE PROPERTY OF BUILDING DROPS, INC. AND SHALL NOT BE REPRODUCED IN WHOLE OR PART WITHOUT WRITTEN CONSENT OF BUILDING DROPS, INC. ALTERATIONS, ADDITIONS, HIGHLIGHTING, OR OTHER MARKINGS TO THIS DOCUMENT ARE NOT PERMITTED AND INVALIDATE OUR CERTIFICATION.

HERMES F. NORERO, P.E.  
FLORIDA P.E. No. 73778  
BUILDING DROPS, INC  
398 E. DANIA BEACH BLVD. # 338  
DANIA BEACH, FL 33004  
FBPE CERT. OF AUTHORIZATION No. 29578

FL #:

FL11573

DATE:

03.12.18

DWG. BY:

RV

CHK. BY:

HFN

SCALE:

NTS

DWG. #:

WWD033

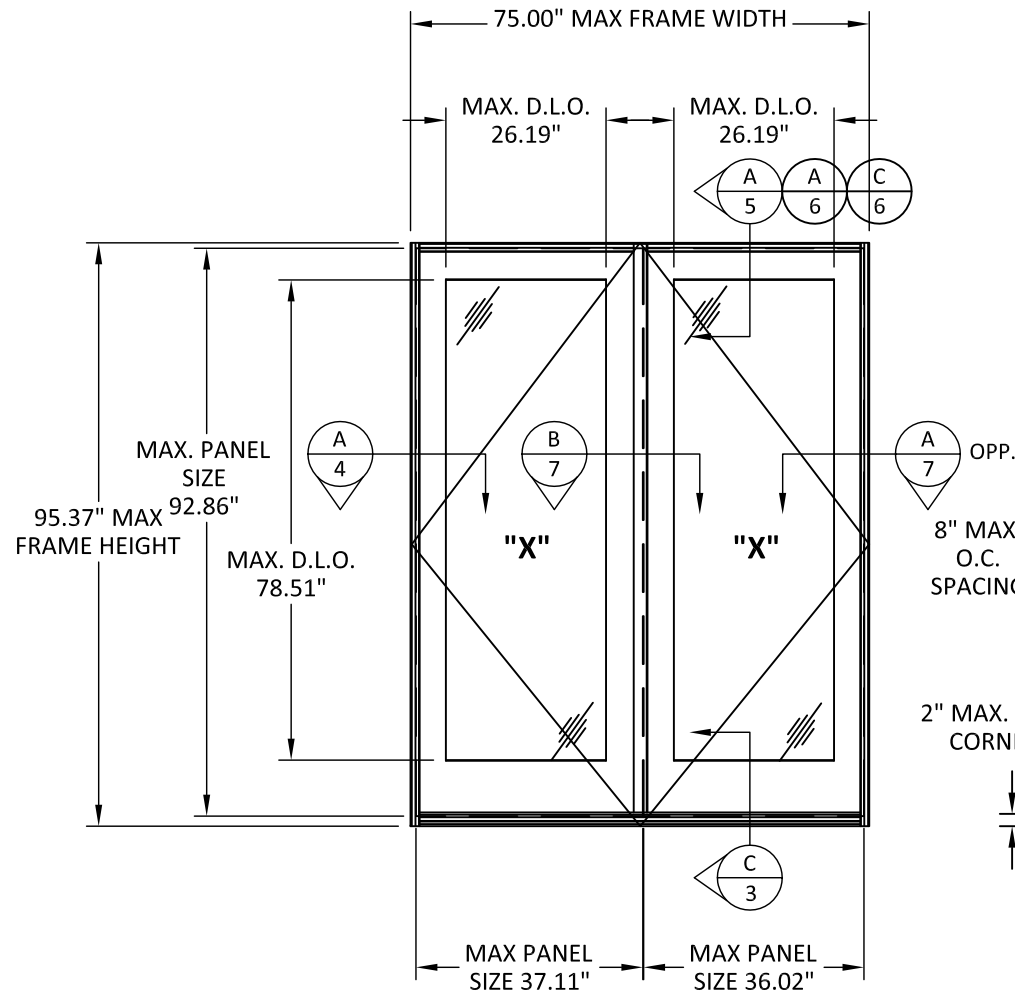
SHEET:

1

OF 8

5/16/2018 9:37 AM

s:\projects\windor windows and doors\lbc-submittal - pinnacle clad inswing door (111573).dwg\lbc-submittal - pinnacle clad inswing door (111573).dwg\lbc-submittal - pinnacle clad inswing door (111573).dwg



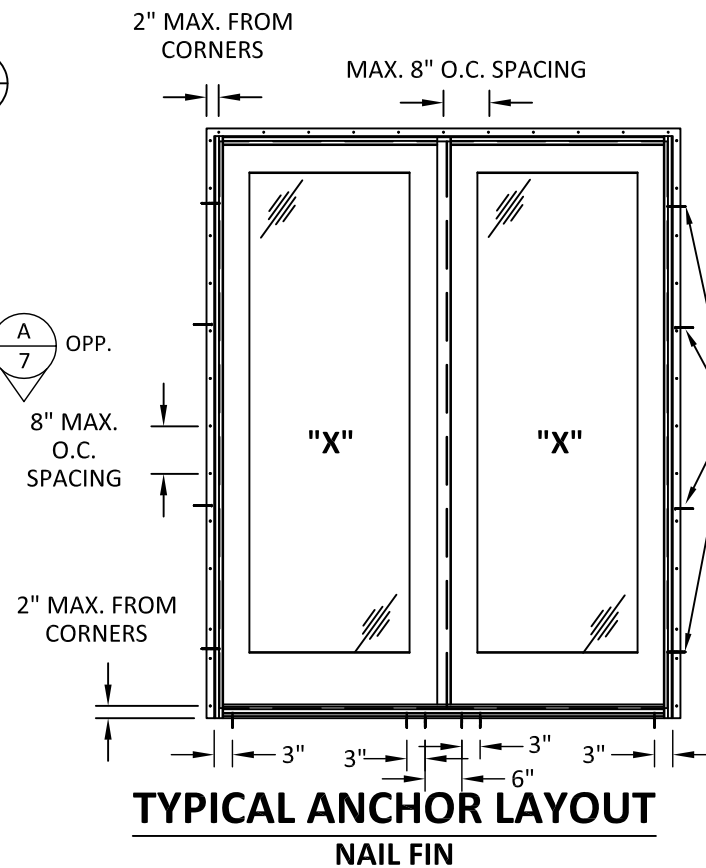
**TYPICAL ELEVATION  
BI-HINGE**

**NARROW STILE DLO NOTES:**

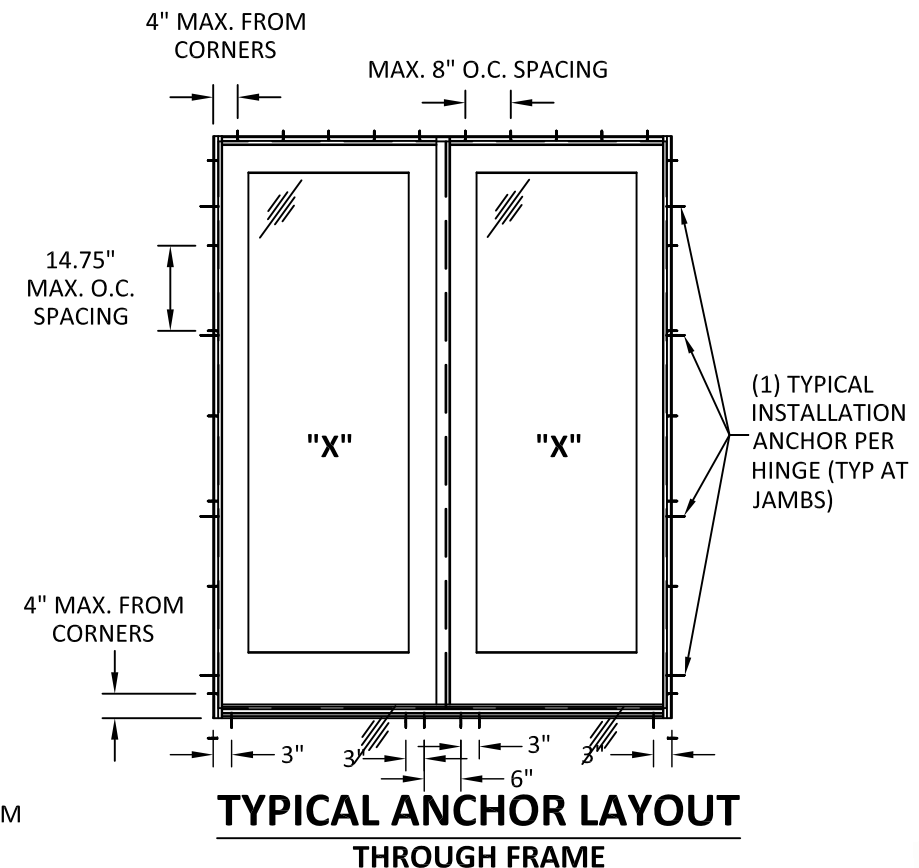
TYPICAL ELEVATIONS SHOWN ABOVE SHOW MAXIMUM FRAME SIZE FOR BI-HINGE AND STA-ACT CONFIGURATIONS. NARROW STILE CONFIGURATIONS STATED ON SHEET 1 DESIGN PRESSURE TABLE SHALL HAVE MAXIMUM ALLOWABLE DLO DIMENSIONS OF 29.25" X 81.875".

**NOTE:**

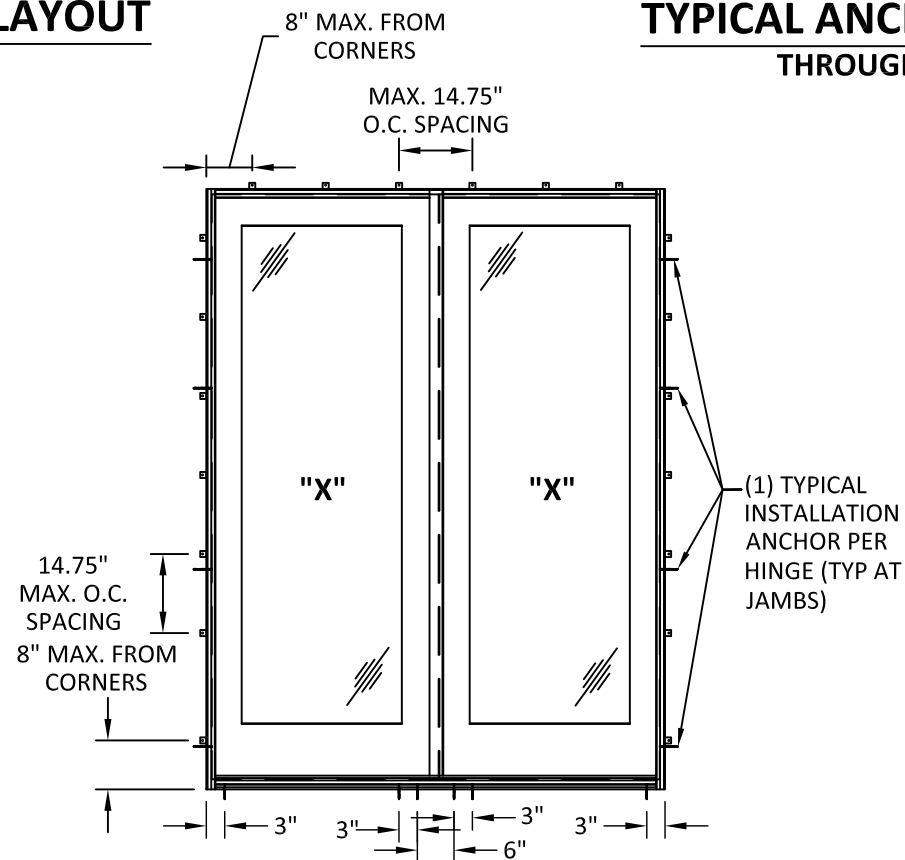
USE NAIL FIN AT HEAD AND SIDE JAMBS, USE THRU FRAME INSTALLATION METHOD AT SILL



**TYPICAL ANCHOR LAYOUT  
NAIL FIN**



**TYPICAL ANCHOR LAYOUT  
THROUGH FRAME**



**TYPICAL ANCHOR LAYOUT  
CLIP INSTALLATION**



**WINDSOR WINDOWS  
& DOORS**

900 S. 19TH STREET.  
WEST DES MOINES, IA 50265  
PH: (515)223-6660 FAX: (515)224-1938

TITLE: Pinnacle Clad Inswing Door (Impact)  
Elevation & Anchor Layout

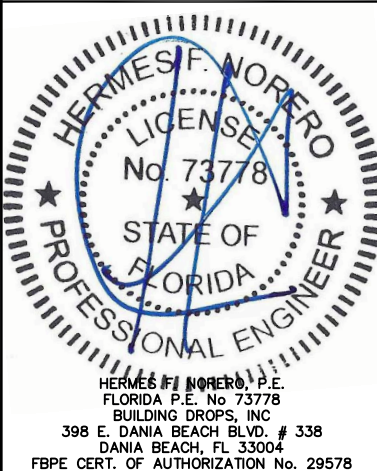
PREPARED BY: BUILDING DROPS, INC.

398 E. DANIA BEACH BLVD., STE. 338  
DANIA BEACH, FL 33004  
PH: (954)399-8478  
FAX: (954)744-4738  
WEB: www.buildingdrops.com



REMARKS	BY	DATE

THIS DOCUMENT IS THE PROPERTY OF BUILDING DROPS, INC. AND SHALL NOT BE REPRODUCED IN WHOLE OR PART WITHOUT WRITTEN CONSENT OF BUILDING DROPS, INC. ALTERATIONS, ADDITIONS, HIGHLIGHTING, OR OTHER MARKINGS TO THIS DOCUMENT ARE NOT PERMITTED AND INVALIDATE OUR CERTIFICATION.



FL #:

**FL11573**

DATE: **03.12.18**

DWG. BY: **RV**

CHK. BY: **HFN**

SCALE: **NTS**

DWG. #: **WWD033**

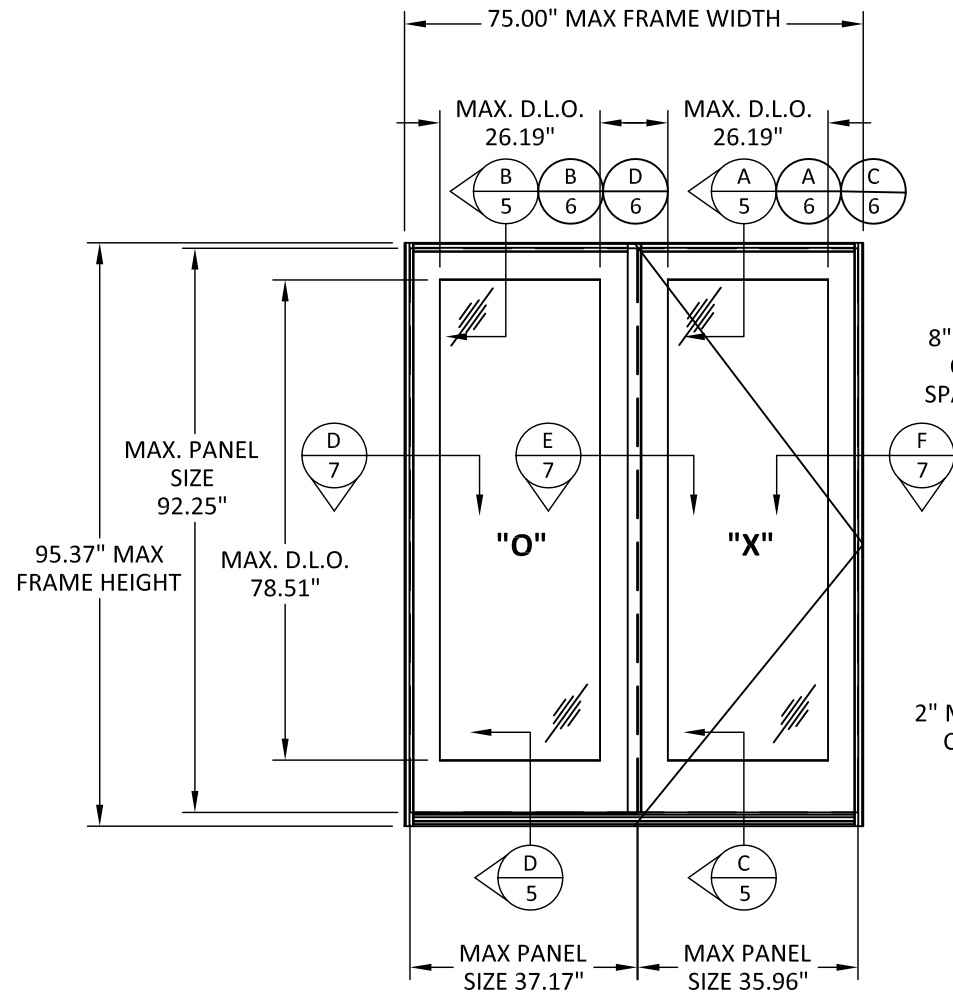
SHEET:

**2**

OF 8

5/16/2018 9:37 AM

s:\projects\windor windows and doors\fbc submittal - pinnacle clad inswing door (111573).dwg\impact\ww033.dwg



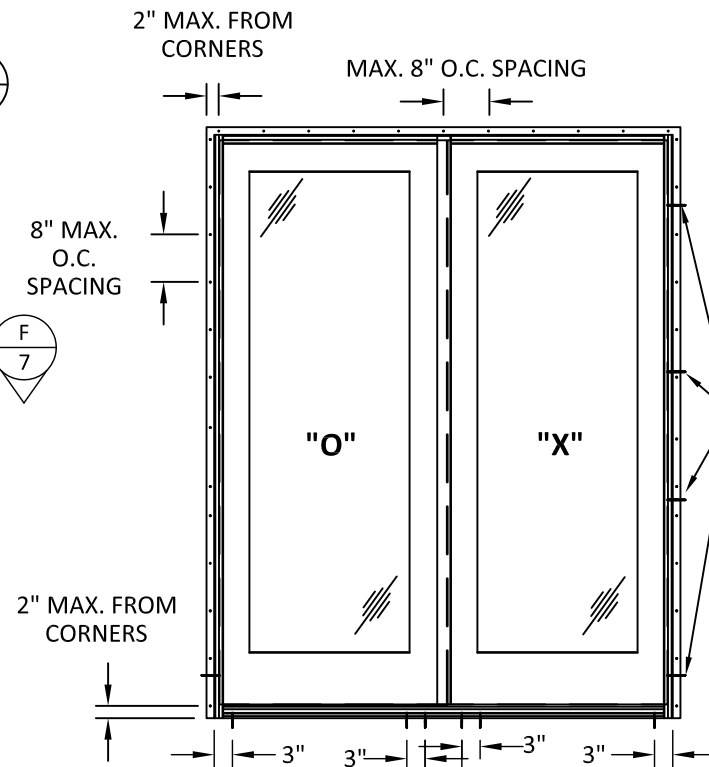
**TYPICAL ELEVATION  
STATIONARY-ACTIVE**

**NARROW STILE DLO NOTES:**

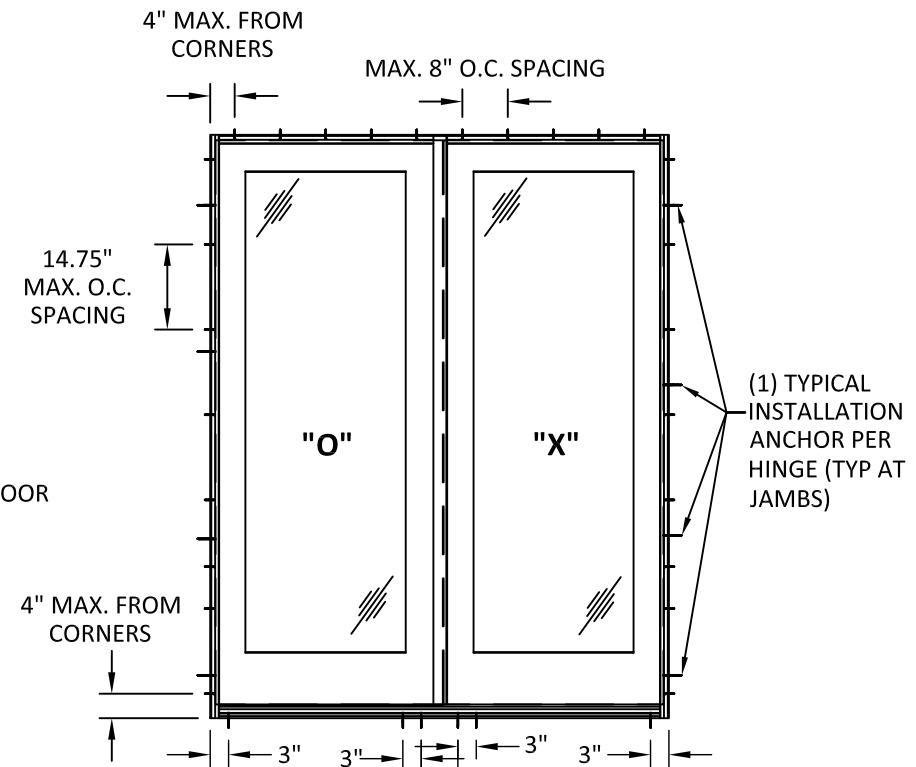
TYPICAL ELEVATIONS SHOWN ABOVE SHOW MAXIMUM FRAME SIZE FOR BI-HINGE AND STA-ACT CONFIGURATIONS. NARROW STILE CONFIGURATIONS STATED ON SHEET 1 DESIGN PRESSURE TABLE SHALL HAVE MAXIMUM ALLOWABLE DLO DIMENSIONS OF 29.25" X 81.875".

**NOTE:**

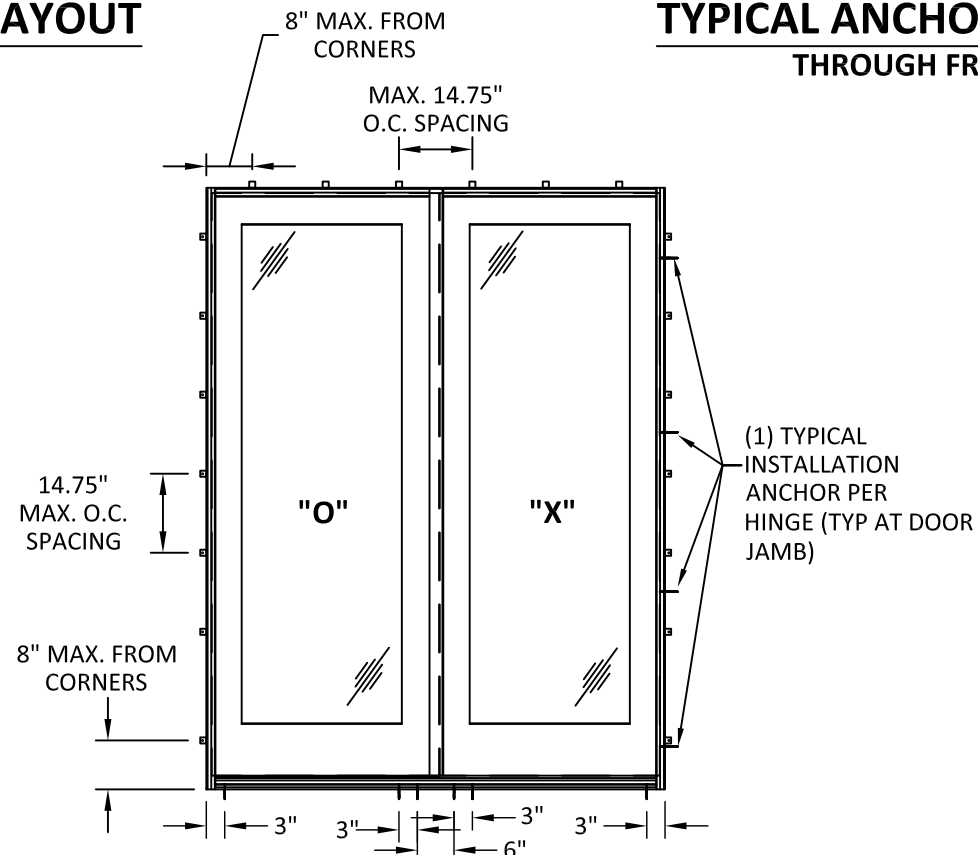
USE NAIL FIN AT HEAD AND SIDE JAMBS, USE THRU FRAME INSTALLATION METHOD AT SILL



**TYPICAL ANCHOR LAYOUT  
NAIL FIN**



**TYPICAL ANCHOR LAYOUT  
THROUGH FRAME**



**TYPICAL ANCHOR LAYOUT  
CLIP INSTALLATION**



**WINDSOR WINDOWS  
& DOORS**

900 S. 19TH STREET.  
WEST DES MOINES, IA 50265  
PH: (515)223-6660 FAX: (515)224-1938

TITLE: Pinnacle Clad Inswing Door (Impact)

ELEVATION & ANCHOR LAYOUT

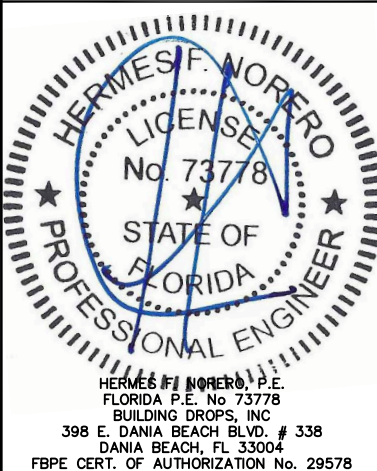
PREPARED BY: BUILDING DROPS, INC.

398 E. DANIA BEACH BLVD., STE. 338  
DANIA BEACH, FL 33004  
PH: (954)399-8478  
FAX: (954)744-4738  
WEB: www.buildingdrops.com



REMARKS	BY	DATE

THIS DOCUMENT IS THE PROPERTY OF BUILDING DROPS, INC. AND SHALL NOT BE REPRODUCED IN WHOLE OR PART WITHOUT WRITTEN CONSENT OF BUILDING DROPS, INC. ALTERATIONS, ADDITIONS, HIGHLIGHTING, OR OTHER MARKINGS TO THIS DOCUMENT ARE NOT PERMITTED AND INVALIDATE OUR CERTIFICATION.



FL #:

**FL11573**

DATE: 03.12.18

DWG. BY: RV

CHK. BY: HFN

SCALE: NTS

DWG. #: WWD033

SHEET:

3

OF 8



TITLE: Pinnacle Clad Inswing Door (Impact)

### ELEVATION & ANCHOR LAYOUT

BUILDING DROPS, INC.

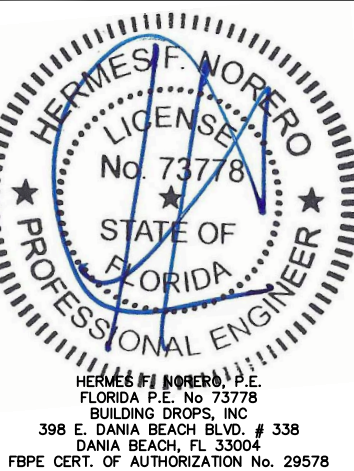
398 E. DANIA BEACH BLVD., STE. 338  
DANIA BEACH, FL 33004

PH: (954) 399-8478  
FAX: (954) 744.4738



EMARKS	BY	DATE

THIS DOCUMENT IS THE PROPERTY OF BUILDING DROPS, INC. AND SHALL NOT BE REPRODUCED IN WHOLE OR PART WITHOUT WRITTEN CONSENT OF BUILDING DROPS, INC. ALTERATIONS, ADDITIONS, HIGHLIGHTING, OR OTHER MARKINGS TO THIS DOCUMENT ARE NOT PERMITTED AND INVALIDATE OUR CERTIFICATION.



FL #:

FL11573

DATE: 03.12.18

DWG. BY: <b>RV</b>	CHK. BY: <b>HFN</b>
-----------------------	------------------------

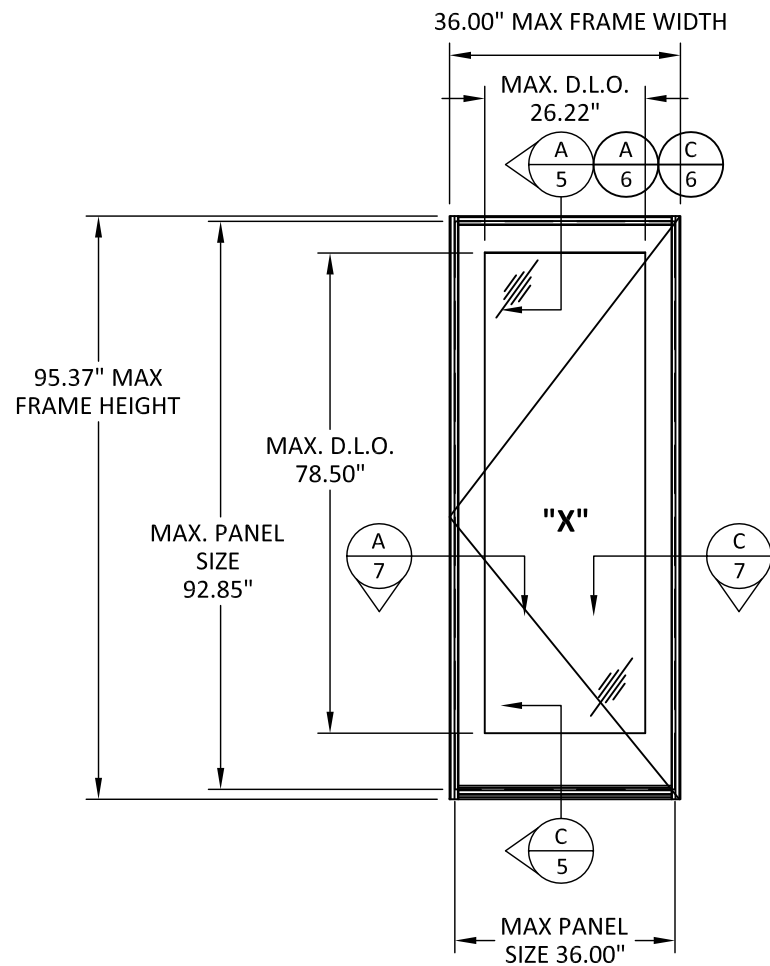
SCALE: NTS

DWG. #: WWD033

SHEET: \_\_\_\_\_

4

DF 8



## TYPICAL ELEVATION

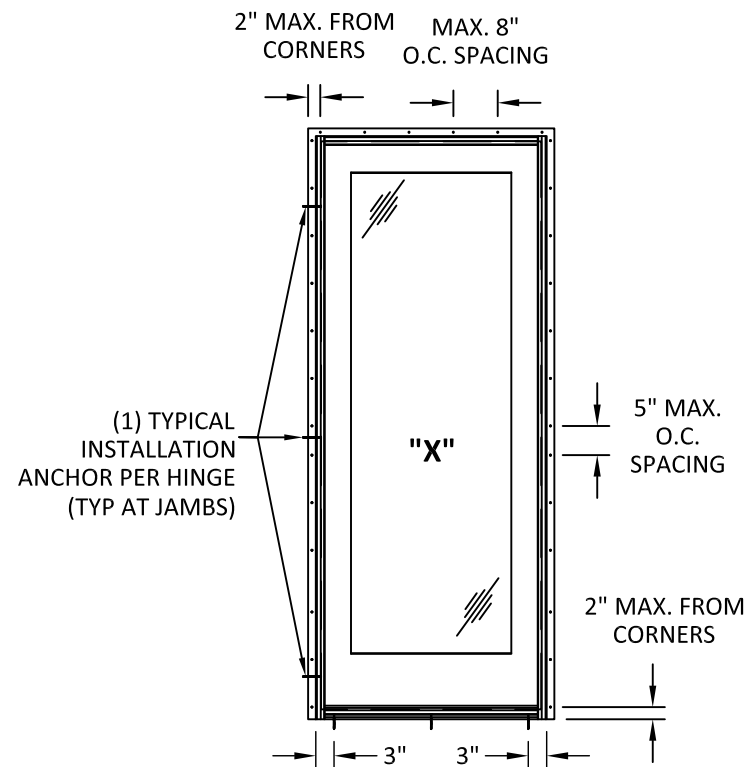
---

### SINGLE DOOR

#### NARROW STILE DLO NOTES:

TYPICAL ELEVATIONS SHOWN ABOVE SHOW MAXIMUM FRAME SIZE FOR BI-HINGE AND STA-ACT CONFIGURATIONS. NARROW STILE CONFIGURATIONS STATED ON SHEET 1 DESIGN PRESSURE TABLE SHALL HAVE MAXIMUM ALLOWABLE DLO DIMENSIONS OF 29.25" X 81.875".

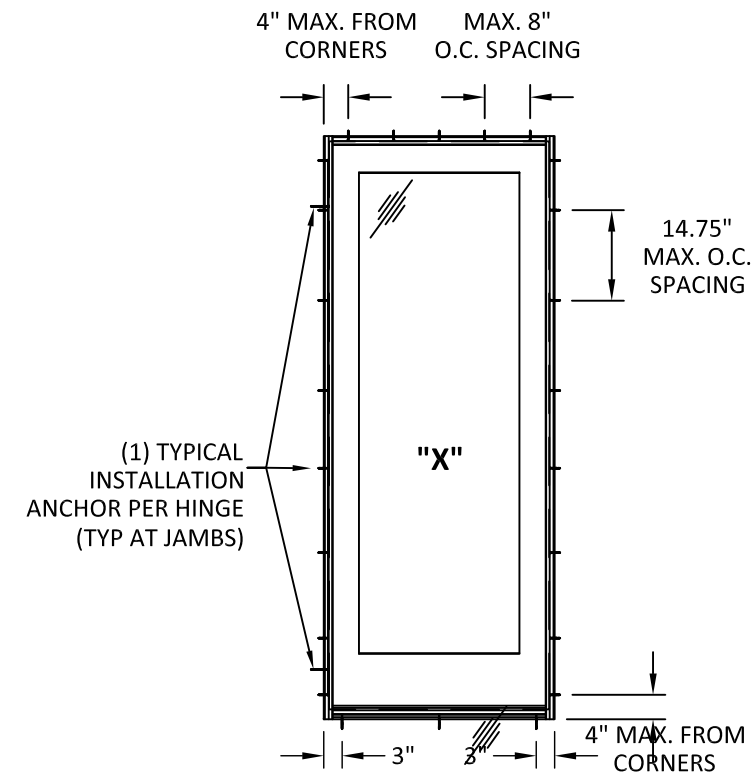
**NOTE:**  
USE NAIL FIN AT HEAD AND  
SIDE JAMBS, USE THRU FRAME  
INSTALLATION METHOD AT SILL



## TYPICAL ANCHOR LAYOUT

---

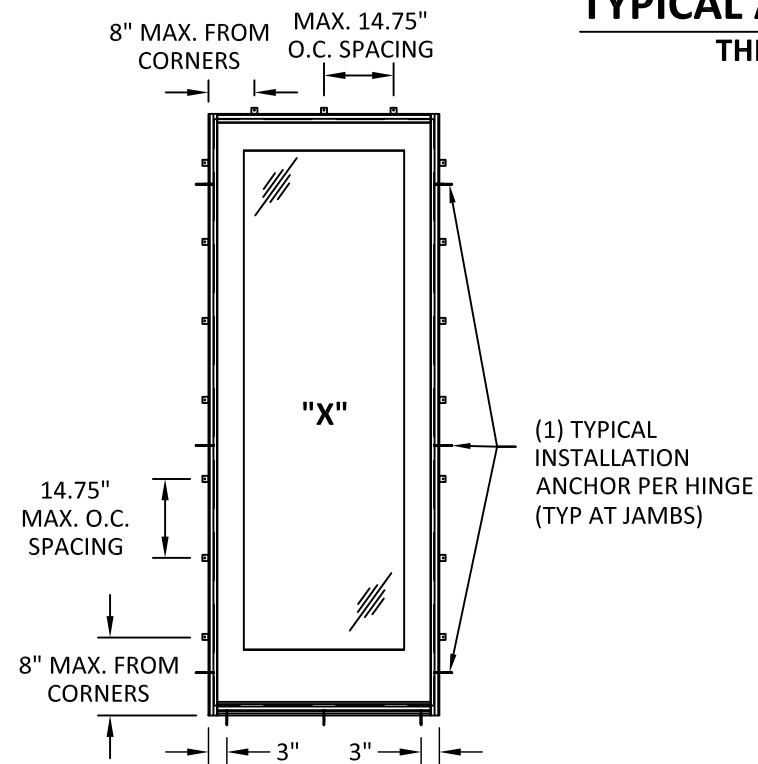
### NAIL FIN



## TYPICAL ANCHOR LAYOUT

---

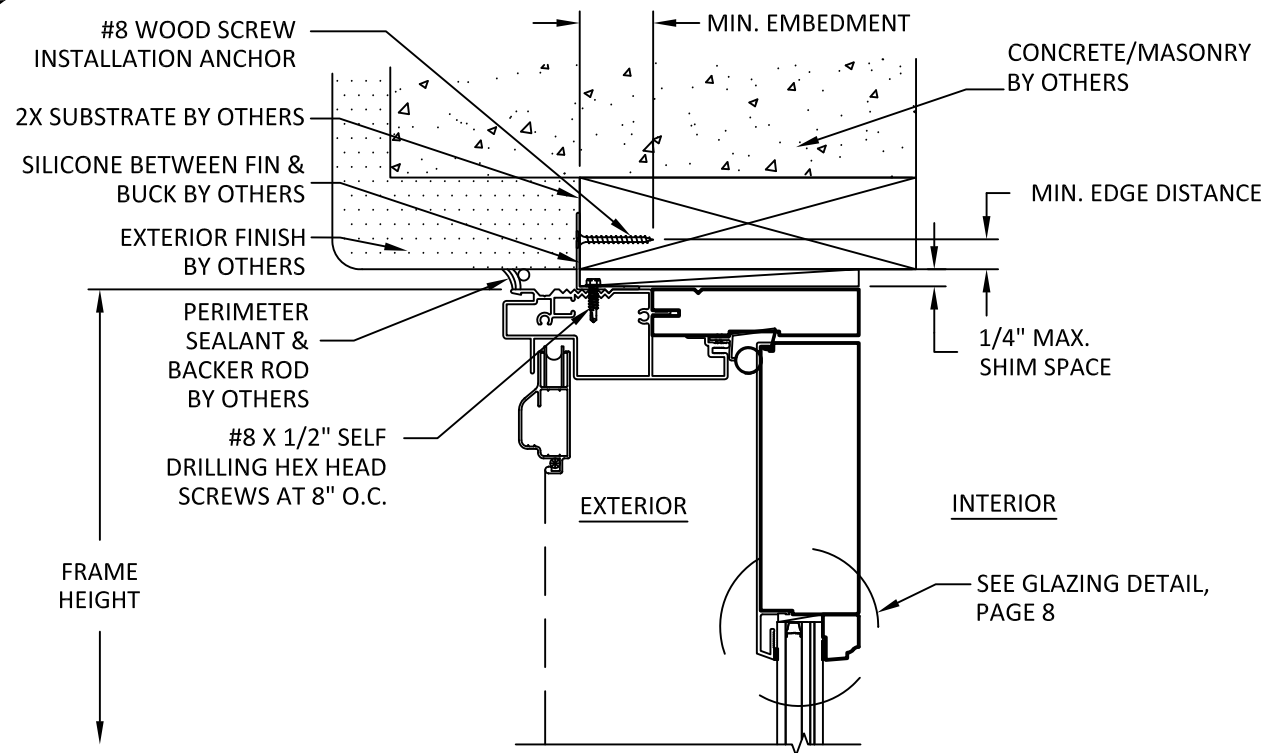
### THROUGH FRAME



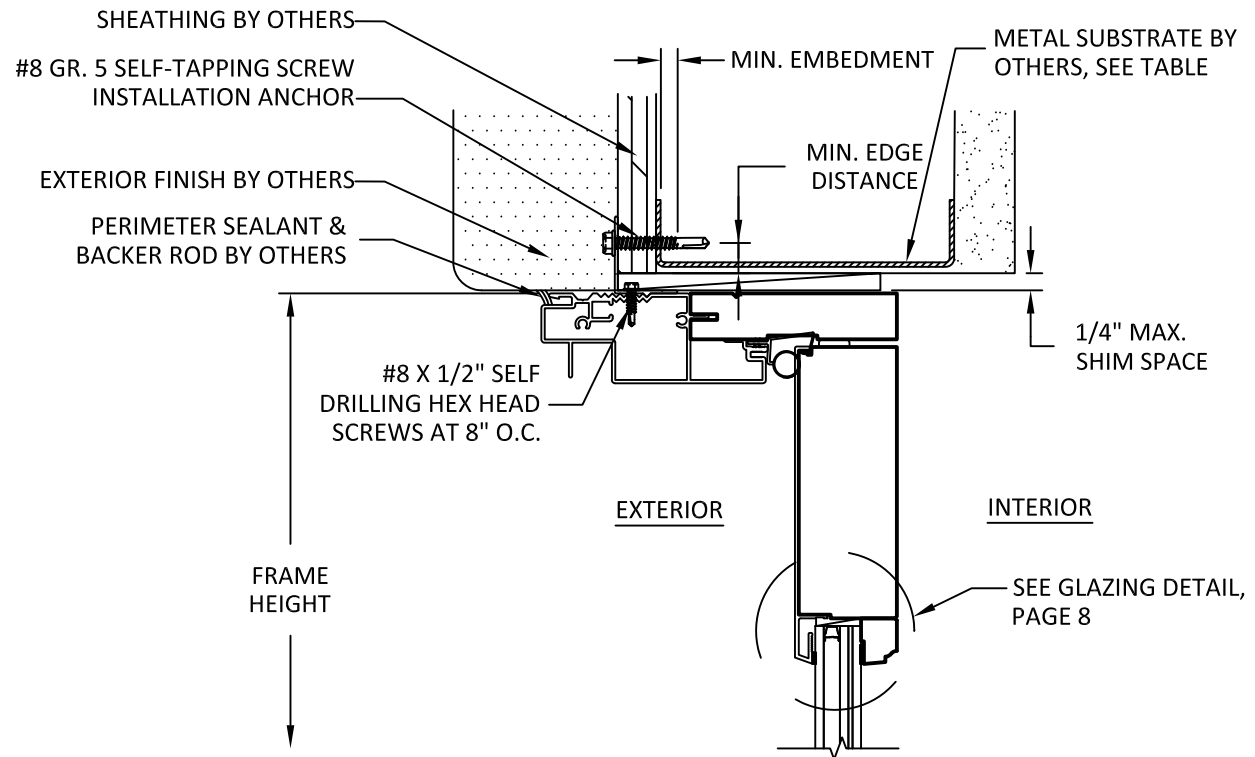
## TYPICAL ANCHOR LAYOUT

5/16/2018 9:37 AM

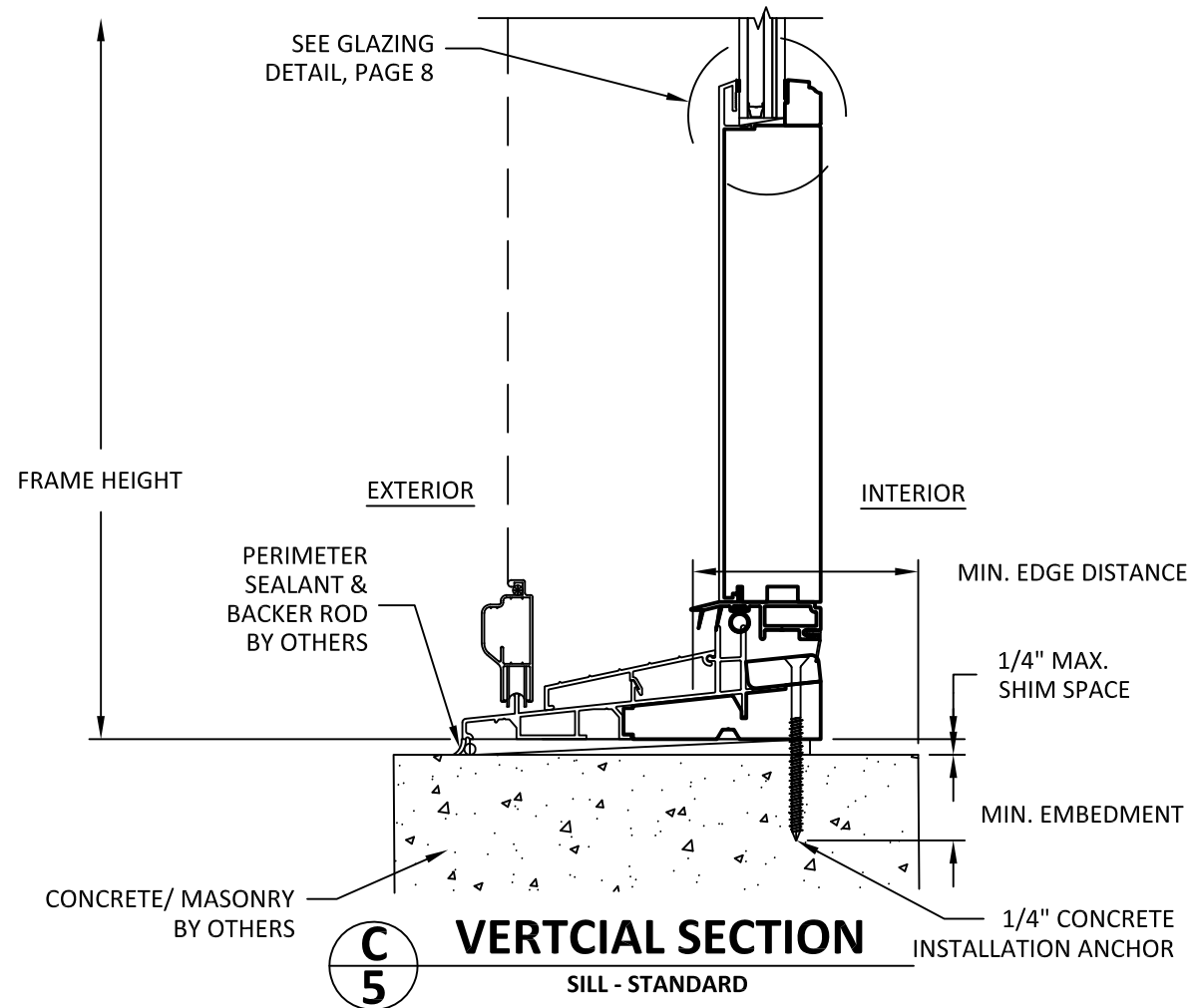
s:\projects\windor windows and doors\fb-c-18-0227 - fbc submittal - pinnacle clad inswing door (111573)\dwgs\impact\ww0033.dwg



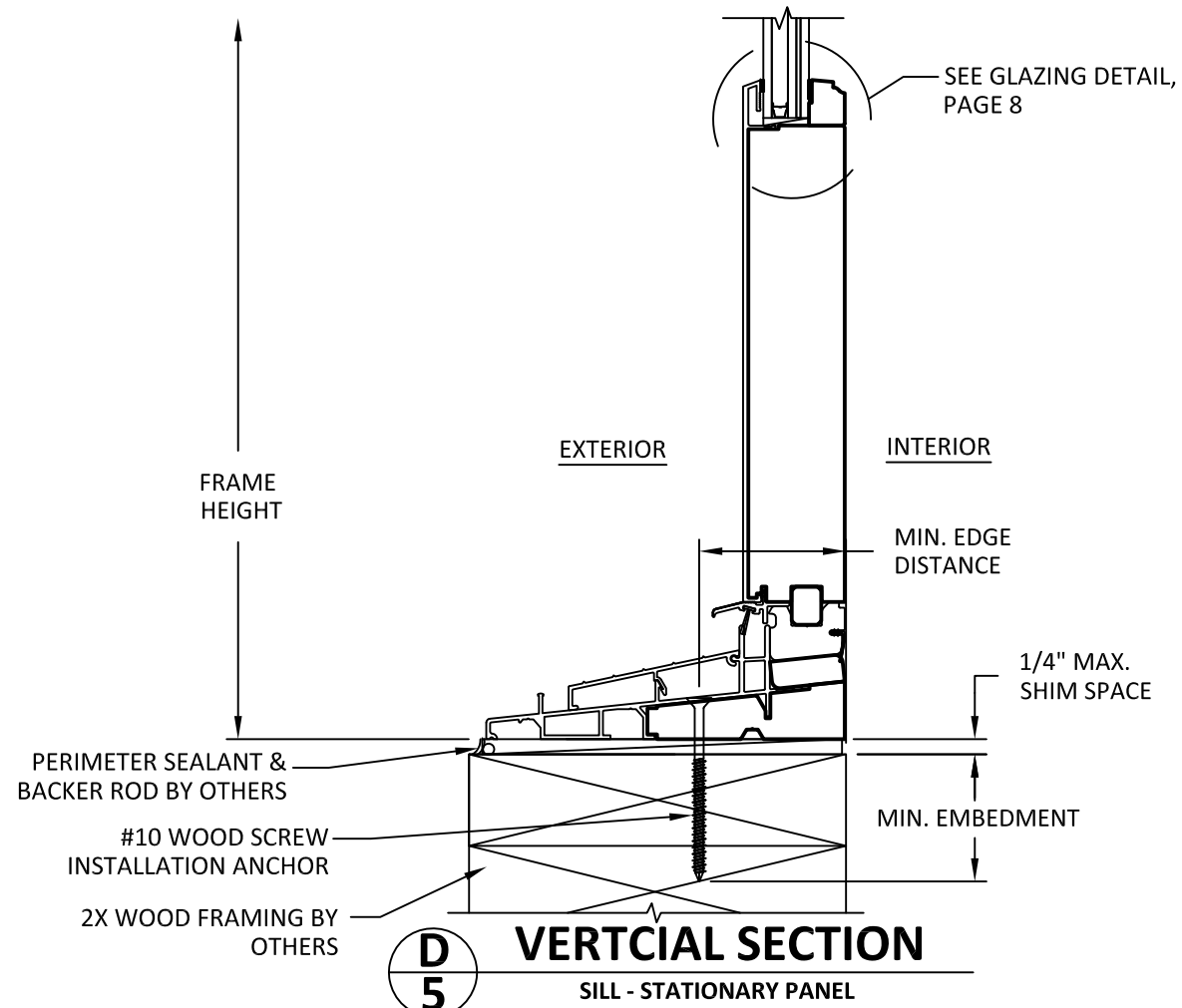
**A**  
**5** **VERTICAL SECTION**  
HEAD - FIN INSTALLATION



**B**  
**5** **VERTICAL SECTION**  
HEAD - FIN INSTALLATION



**C**  
**5** **VERTICAL SECTION**  
SILL - STANDARD



**D**  
**5** **VERTICAL SECTION**  
SILL - STATIONARY PANEL



**WINDSOR WINDOWS & DOORS**

900 S. 19TH STREET.  
WEST DES MOINES, IA 50265  
PH: (515)223-6660 FAX: (515)224-1938

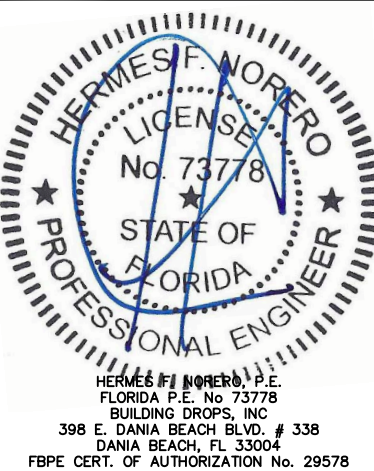
TITLE: PINNACLE CLAD INSWING  
DOOR (IMPACT)  
INSTALLATION DETAILS

PREPARED BY: BUILDING DROPS, INC.  
398 E. DANIA BEACH BLVD., STE. 338  
DANIA BEACH, FL 33004  
PH: (954)399-8478  
FAX: (954)744-4738  
WEB: www.buildingdrops.com



REMARKS	BY	DATE

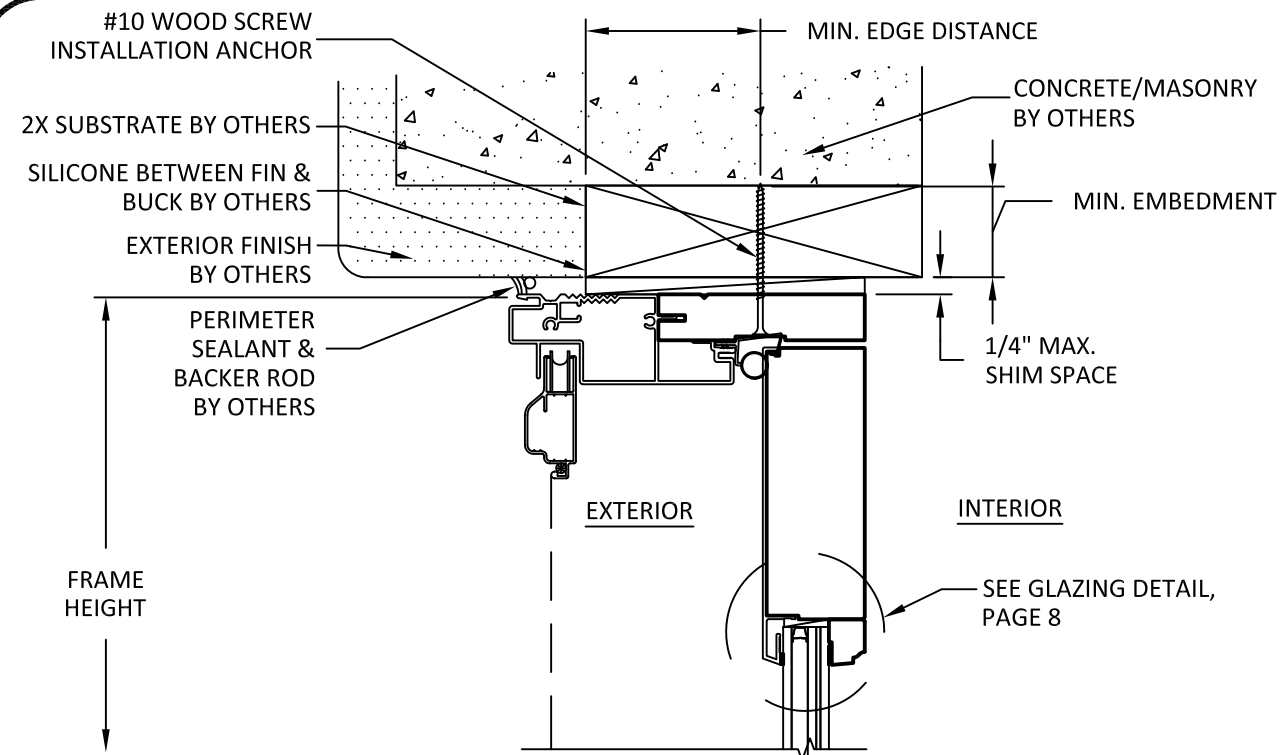
THIS DOCUMENT IS THE PROPERTY OF BUILDING DROPS, INC. AND SHALL NOT BE REPRODUCED IN WHOLE OR PART WITHOUT WRITTEN CONSENT OF BUILDING DROPS, INC. ALTERATIONS, ADDITIONS, HIGHLIGHTING, OR OTHER MARKINGS TO THIS DOCUMENT ARE NOT PERMITTED AND INVALIDATE OUR CERTIFICATION.



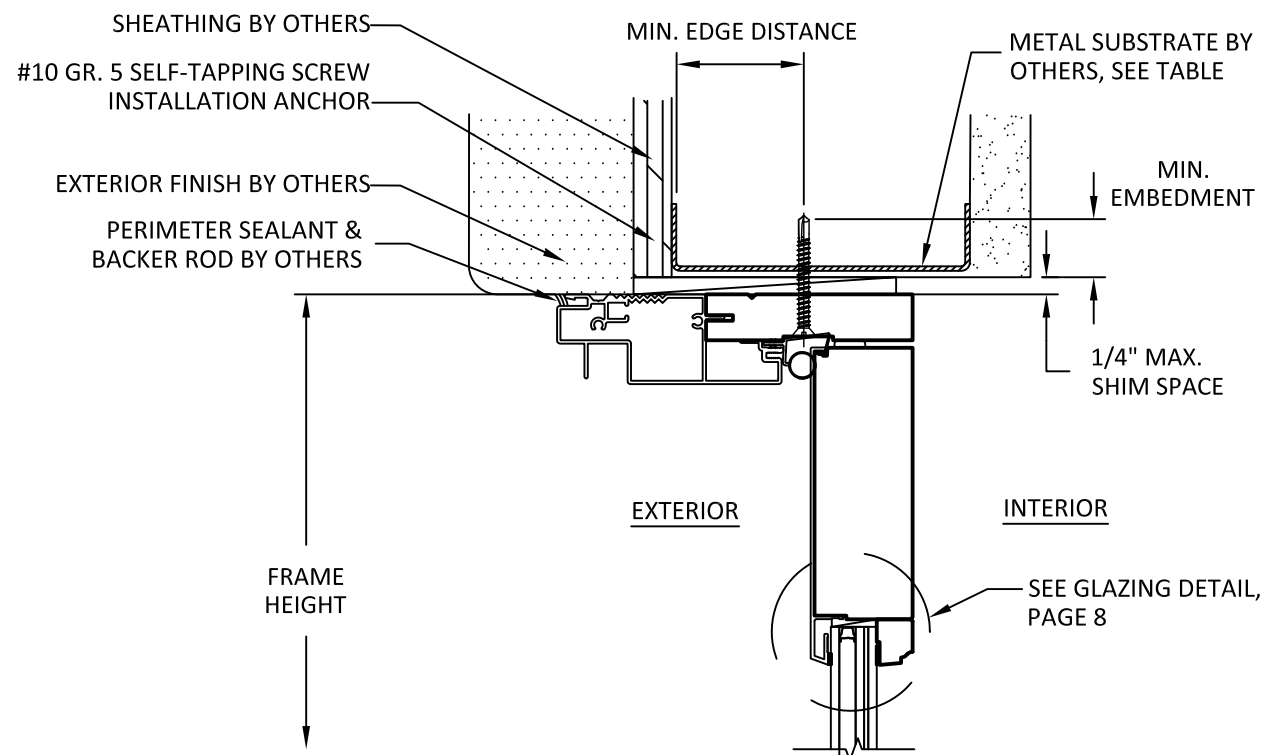
FL #:		FL11573	
DATE:		03.12.18	
DWG. BY:		CHK. BY:	
RV		HFN	
SCALE:		NTS	
DWG. #:		WWD033	
SHEET:			

5/16/2018 9:37 AM

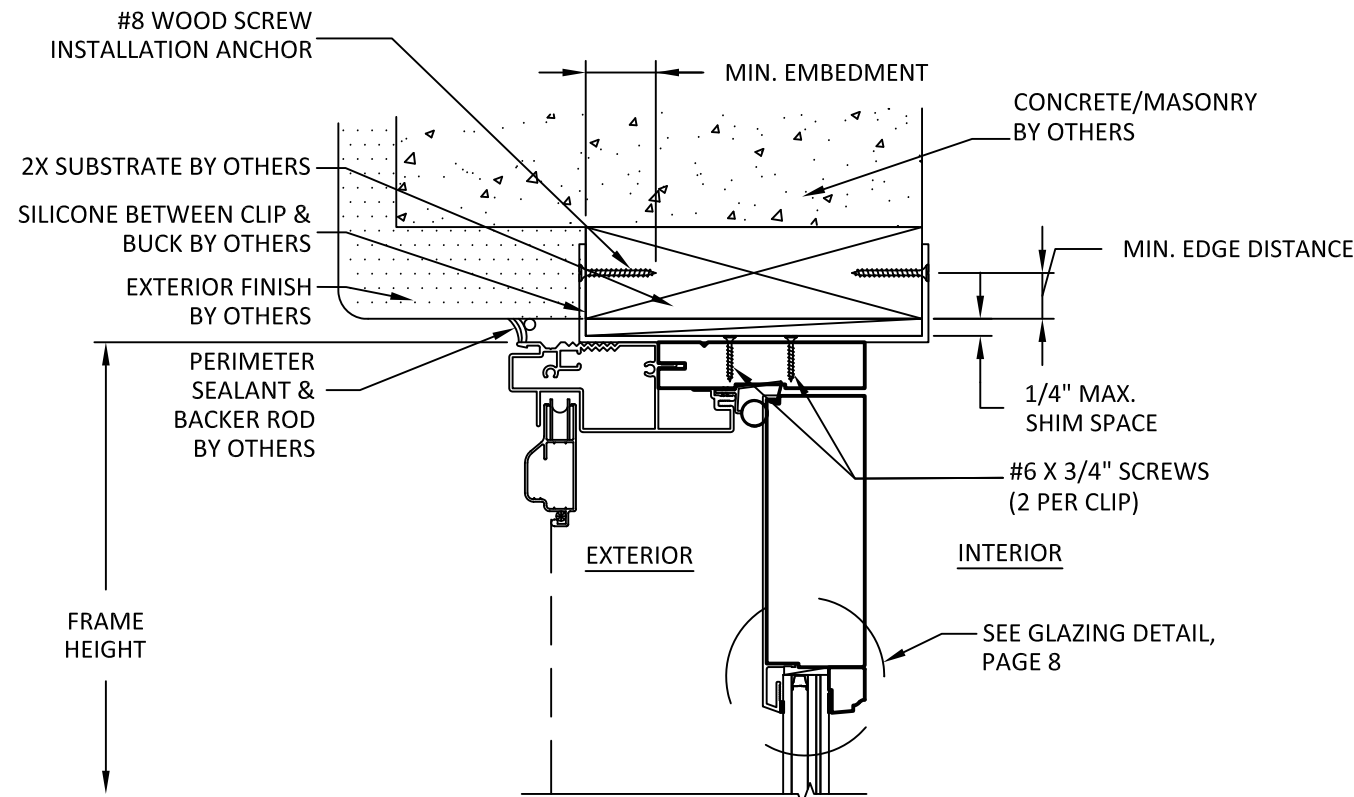
s:\projects\windsor windows and doors\fb-18-0227 - fbc submittal - pinnacle clad inswing door (111573) dwgs\impact\ww0033.dwg



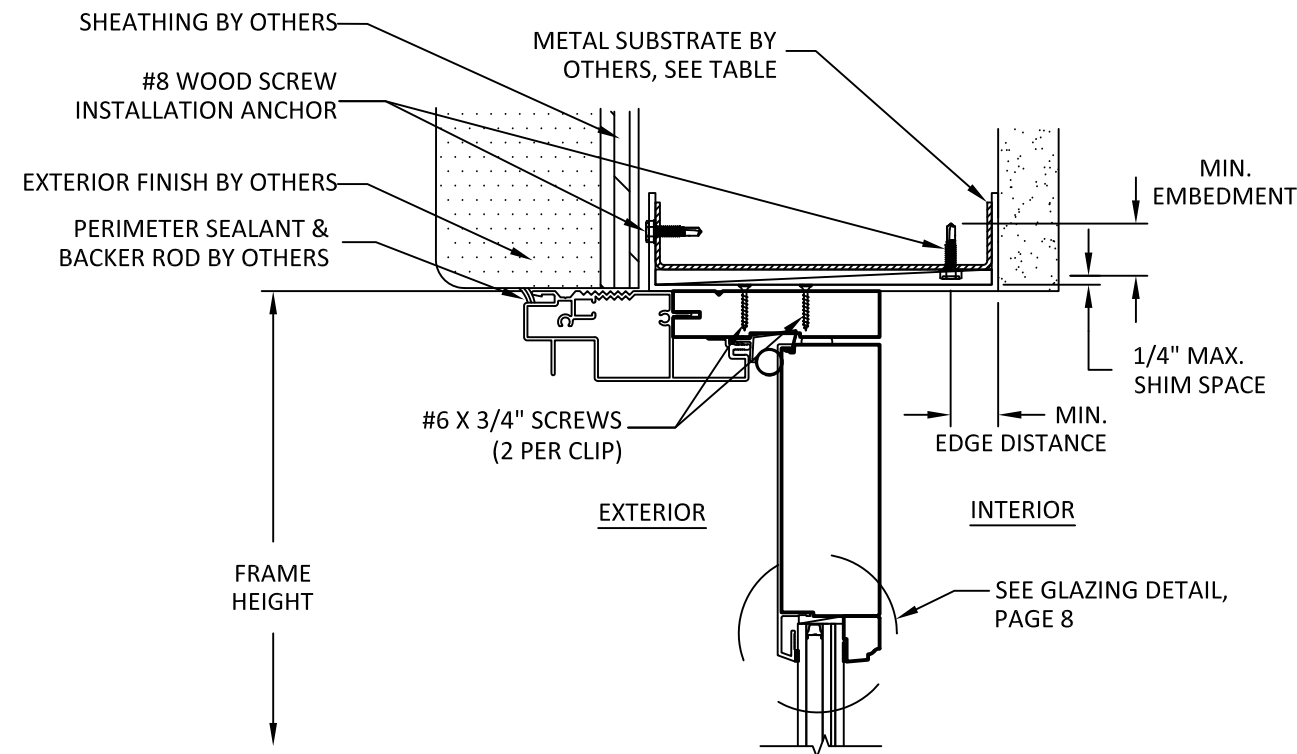
**A**  
**6** **VERTICAL SECTION**  
HEAD - THROUGH FRAME INSTALLATION



**B**  
**6** **VERTICAL SECTION**  
HEAD - THROUGH FRAME INSTALLATION



**C**  
**6** **VERTICAL SECTION**  
HEAD - CLIP INSTALLATION



**D**  
**6** **VERTICAL SECTION**  
HEAD - CLIP FRAME INSTALLATION



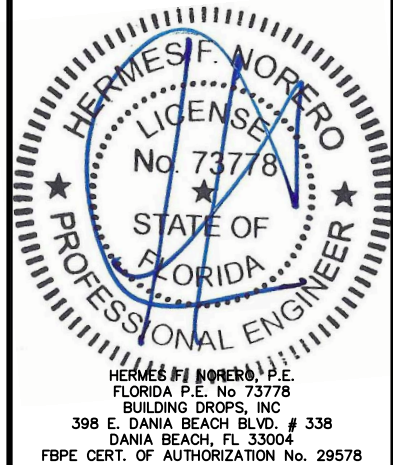
**WINDSOR WINDOWS & DOORS**  
900 S. 19TH STREET.  
WEST DES MOINES, IA 50265  
PH: (515)223-6660 FAX: (515)224-1938

**TITLE:** PINNACLE CLAD INSWING DOOR (IMPACT) INSTALLATION DETAILS & GLAZING DETAIL

**PREPARED BY:** BUILDING DROPS, INC.  
398 E. DANIA BEACH BLVD., STE. 338  
DANIA BEACH, FL 33004  
PH: (954)399-8478  
FAX: (954)744-4738  
WEB: www.buildingdrops.com

REMARKS	BY	DATE

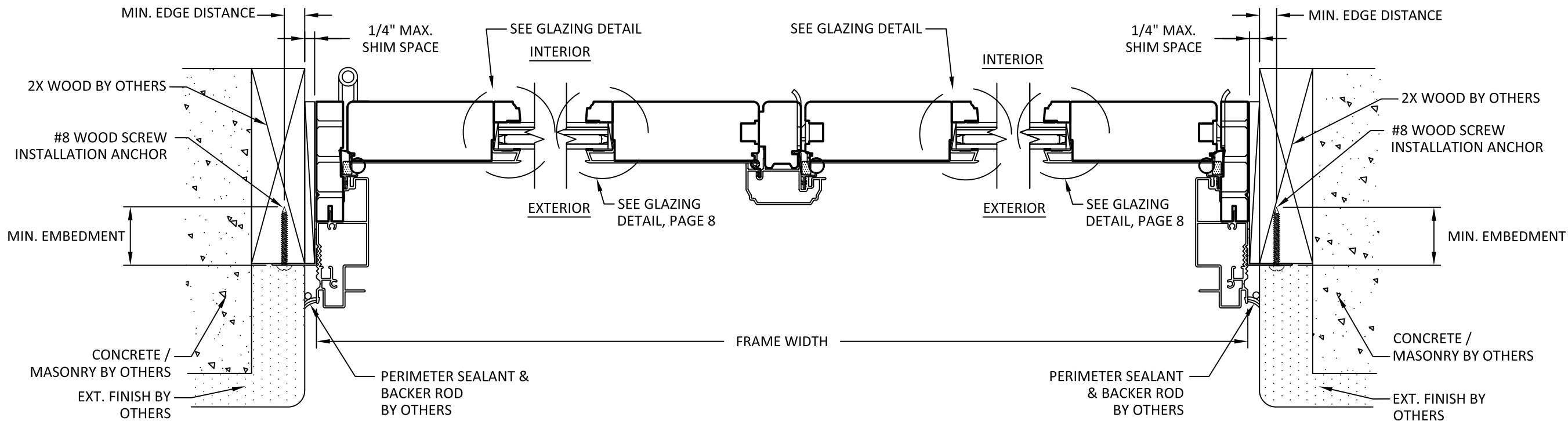
THIS DOCUMENT IS THE PROPERTY OF BUILDING DROPS, INC. AND SHALL NOT BE REPRODUCED IN WHOLE OR PART WITHOUT WRITTEN CONSENT OF BUILDING DROPS, INC. ALTERATIONS, ADDITIONS, HIGHLIGHTING, OR OTHER MARKINGS TO THIS DOCUMENT ARE NOT PERMITTED AND INVALIDATE OUR CERTIFICATION.



FL #:		FL11573	
DATE:		03.12.18	
DWG. BY:		CHK. BY:	
RV		HFN	
SCALE:		NTS	
DWG. #:		WWD033	
SHEET:			



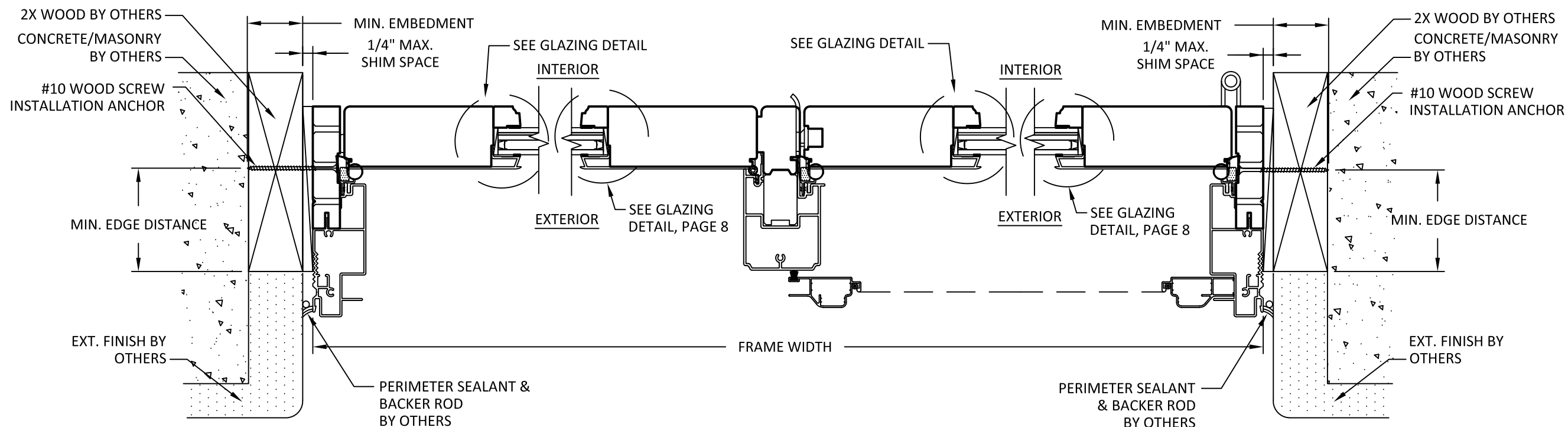
s:\projects\windor windows and doors\fb-c submittal - pinnacle clad inswing door (111573)\dwgs\impact\ww033.dwg - fbc submittal - pinnacle clad inswing door (111573) dwgs\impact\ww033.dwg 5/16/2018 9:37 AM



**A**  
**7** **HORIZONTAL SECTION**  
JAMB - FIN INSTALLATION

**B**  
**7** **HORIZONTAL SECTION**  
(BI-HINGE - ASTRAGAL)

**C**  
**7** **HORIZONTAL SECTION**  
JAMB - FIN INSTALLATION



**D**  
**7** **HORIZONTAL SECTION**  
JAMB - THROUGH FRAME INSTALLATION

**E**  
**7** **HORIZONTAL SECTION**  
STA-ACT ASTRAGAL

**F**  
**7** **HORIZONTAL SECTION**  
JAMB - THROUGH FRAME INSTALLATION

CONFIGURATION NOTES:  
BI-HINGE SECTION DETAILS SHOWN IN COMBINATION WITH NARROW STILE PROFILES, STA-ACT SECTION DETAILS SHOWN IN COMBINATION WITH REGULAR STILE PROFILES. DETAILS ARE INTENDED TO BE REPRESENTATIVE AND MAY BE INTERMIXED IN ACCORDANCE WITH CONFIGURATIONS STATED ON SHEET 1 DESIGN PRESSURE TABLE.



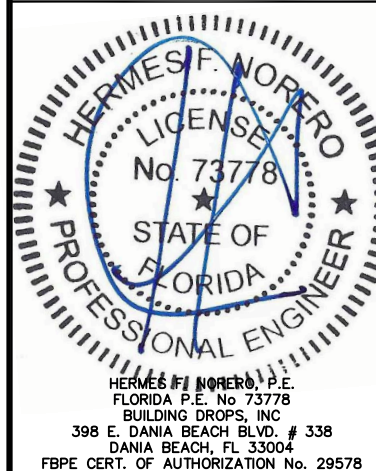
**WINDSOR WINDOWS & DOORS**  
900 S. 19TH STREET.  
WEST DES MOINES, IA 50265  
PH: (515)223-6660 FAX: (515)224-1938

TITLE: Pinnacle Clad Inswing Door (Impact)  
INSTALLATION DETAILS & GLAZING DETAIL

PREPARED BY: BUILDING DROPS, INC.  
398 E. DANIA BEACH BLVD., STE. 338  
DANIA BEACH, FL 33004  
PH: (954)399-8478  
FAX: (954)744-4738  
WEB: www.buildingdrops.com

REMARKS	BY	DATE

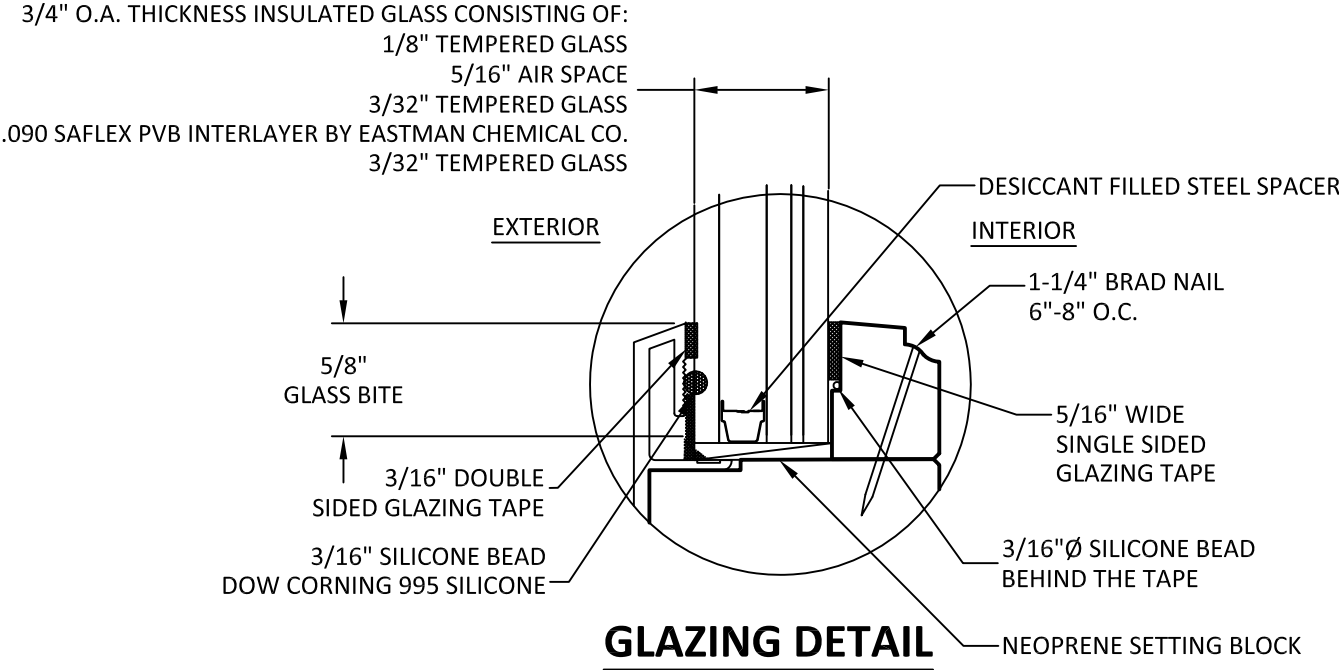
THIS DOCUMENT IS THE PROPERTY OF BUILDING DROPS, INC. AND SHALL NOT BE REPRODUCED IN WHOLE OR PART WITHOUT WRITTEN CONSENT OF BUILDING DROPS, INC. ALTERATIONS, ADDITIONS, HIGHLIGHTING, OR OTHER MARKINGS TO THIS DOCUMENT ARE NOT PERMITTED AND INVALIDATE OUR CERTIFICATION.



FL #:	FL11573
DATE:	03.12.18
DWG. BY:	RV
CHK. BY:	HFN
SCALE:	NTS
DWG. #:	WWD033
SHEET:	7

5/16/2018 9:37 AM

s:\projects\windsor windows and doors\fbc submittal - pinnacle clad inswing door (111573)\dwgs\impact\ww033.dwg



- NOTES:
- SETTING BLOCK DUROMETER HARDNESS OF 70-90 (SHORE A) AS REFERENCED IN CHAPTER 24.
  - SETTING BLOCKS TO BE LOCATED AT 1/4 SPAN LENGTH FOR GLASS WIDER THAN 36" AS PER CHAPTER 24.



WINDSOR WINDOWS  
& DOORS  
900 S. 19TH STREET.  
WEST DES MOINES, IA 50265  
PH: (515)223-6660 FAX: (515)224-1938

TITLE:

PINNACLE CLAD INSWING  
DOOR (IMPACT)

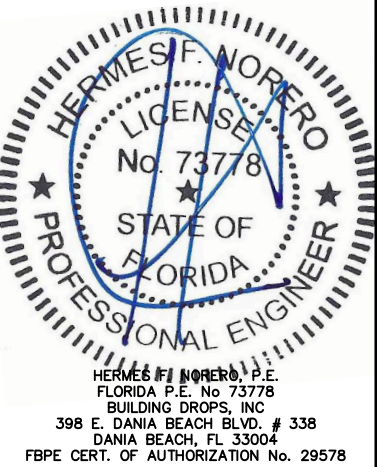
GLAZING DETAIL

PREPARED BY:

BUILDING DROPS, INC.  
398 E. DANIA BEACH BLVD., STE. 338  
DANIA BEACH, FL 33004  
PH: (954)399-8478  
FAX: (954)744-4738  
WEB: www.buildingdrops.com

REMARKS	BY	DATE

THIS DOCUMENT IS THE PROPERTY OF BUILDING DROPS, INC. AND SHALL NOT BE REPRODUCED IN WHOLE OR PART WITHOUT WRITTEN CONSENT OF BUILDING DROPS, INC. ALTERATIONS, ADDITIONS, HIGHLIGHTING, OR OTHER MARKINGS TO THIS DOCUMENT ARE NOT PERMITTED AND INVALIDATE OUR CERTIFICATION.



FL #:

**FL11573**

DATE: **03.12.18**

DWG. BY: <b>RV</b>	CHK. BY: <b>HFN</b>
-----------------------	------------------------

SCALE: **NTS**

DWG. #: **WWD033**

SHEET: