

s:\projects\windsor windows and doors\fbc-18-1256-1 - fbc submittal - fl14858-1.pinnacle select aluminum clad wood casement.f114858.2.pinnacle select aluminum clad\dwgs\wwd030.dwg 3/13/2019 8:22 AM

INSTALLATION NOTES:

1. ONE (1) INSTALLATION ANCHOR IS REQUIRED AT EACH ANCHOR LOCATION SHOWN.
2. THE NUMBER OF INSTALLATION ANCHORS DEPICTED IS THE MINIMUM NUMBER OF ANCHORS TO BE USED FOR PRODUCT INSTALLATION OF THE MAXIMUM SIZE LISTED.
3. INSTALL INDIVIDUAL INSTALLATION ANCHORS WITHIN A TOLERANCE OF ±1/2 INCH BASED ON QUANTITIES IN DP CHARTS NOT TO EXCEED THE DEPICTED LOCATION & SPACING IN THE ANCHOR LAYOUT DETAILS (I.E., WITHOUT CONSIDERATION OF TOLERANCES). TOLERANCES ARE NOT CUMULATIVE FROM ONE INSTALLATION ANCHOR TO THE NEXT
4. SHIM AS REQUIRED AT EACH INSTALLATION ANCHOR WITH LOAD BEARING SHIM(S). MAXIMUM ALLOWABLE SHIM STACK TO BE 3/8 INCH. SHIM WHERE SPACE OF 1/16 INCH OR GREATER OCCURS. SHIM(S) SHALL BE CONSTRUCTED OF HIGH DENSITY PLASTIC OR BETTER.
5. **THROUGH FRAME:** FOR INSTALLATION INTO WOOD FRAMING USE #10 WOOD SCREWS OF SUFFICIENT LENGTH TO ACHIEVE 1 1/2" MINIMUM EMBEDMENT INTO WOOD SUBSTRATE.
6. **THROUGH FRAME:** FOR INSTALLATION THROUGH 1X BUCK TO CONCRETE/MASONRY, OR DIRECTLY INTO CONCRETE/MASONRY, USE 1/4" DIAMETER ITW TAPCONS, ELCO ULTRACONS, ELCO CRETE-FLEX OR HILTI KWIK-CON II OF SUFFICIENT LENGTH TO ACHIEVE 1 1/4" MINIMUM EMBEDMENT.
7. **THROUGH FRAME:** FOR INSTALLATION INTO METAL STUD OR APPROVED MULLION USE #10 GR. 5 SELF TAPPING SCREWS OF SUFFICIENT LENGTH TO ACHIEVE A MINIMUM OF 3 THREADS PENETRATION BEYOND METAL FRAME SUBSTRATE.
8. CLIPS SHALL BE FASTENED TO THE WINDOW FRAME WITH (2) #8 X 5/8" SCREWS. CLIPS ARE 20 GAUGE (0.063" THICKNESS) F'y=33 KSI MIN STEEL WITH OVERALL DIMENSIONS OF 1.5" WIDE, 7.813" ALONG THE LONG LEG, AND 1.942" ALONG THE SHORT LEG.
9. **CLIP ANCHOR:** FOR INSTALLATION INTO WOOD FRAMING USE (2) #8 WOOD SCREWS PER CLIP OF SUFFICIENT LENGTH TO ACHIEVE 1 1/2 INCH MINIMUM EMBEDMENT INTO WOOD SUBSTRATE.
10. **CLIP ANCHOR:** FOR INSTALLATION INTO METAL STUD USE (2) #8 GR. 5 SELF-TAPPING SCREWS PER CLIP OF SUFFICIENT LENGTH TO ACHIEVE 3 THREADS MINIMUM PENETRATION BEYOND THE METAL STRUCTURE.
11. 1.5" X 1.5" X 0.060" 6063-T5 ALUMINUM NAIL FIN SHALL BE FASTENED TO THE WINDOW FRAME WITH #8 X 1/2" SCREWS, 8" MAX. ON CENTER AND 4" MAX. FROM CORNERS, AND 3M VHB TAPE. THE 3M VHB TAPE IS ONLY USED TO HOLD THE DRIP CAP ON AT THE HEAD, IT IS NOT USED ON THE OTHER 3 SIDES OF THE NAIL FIN.
12. **NAIL FIN:** FOR INSTALLATION INTO WOOD FRAMING USE #8 WOOD SCREWS OR USE 10D COMMON NAIL OR 11 GAUGE ROOFING NAIL PER LOCATION OF SUFFICIENT LENGTH TO ACHIEVE 1 1/2 INCH MINIMUM EMBEDMENT INTO WOOD SUBSTRATE.
13. **NAIL FIN:** FOR INSTALLATION INTO METAL STUD OR APPROVED MULLION USE #8 GR. 5 SELF TAPPING SCREWS OF SUFFICIENT LENGTH TO ACHIEVE A MINIMUM OF 3 THREADS PENETRATION BEYOND METAL FRAME SUBSTRATE.
14. MINIMUM EMBEDMENT AND EDGE DISTANCE EXCLUDE WALL FINISHES, INCLUDING BUT NOT LIMITED TO STUCCO, FOAM, BRICK VENEER, AND SIDING.
15. INSTALLATION ANCHORS AND ASSOCIATED HARDWARE MUST BE MADE OF CORROSION RESISTANT MATERIAL OR HAVE A CORROSION RESISTANT COATING.
16. FOR GROUT FILLED BLOCK, DO NOT INSTALL INSTALLATION ANCHORS INTO MORTAR JOINTS. EDGE DISTANCE IS MEASURED FROM FREE EDGE OF BLOCK OR EDGE OF MORTAR JOINT INTO FACE SHELL OF BLOCK.
17. INSTALLATION ANCHORS SHALL BE INSTALLED IN ACCORDANCE WITH ANCHOR MANUFACTURER'S INSTALLATION INSTRUCTIONS, AND ANCHORS SHALL NOT BE USED IN SUBSTRATES WITH STRENGTHS LESS THAN THE MINIMUM STRENGTH SPECIFIED BY THE ANCHOR MANUFACTURER.

WINDSOR WINDOWS & DOORS

PINNACLE SELECT CASEMENT WINDOW

(NON-IMPACT)

CONTINUED INSTALLATION NOTES:

17. INSTALLATION ANCHOR CAPACITIES FOR PRODUCTS HEREIN ARE BASED ON SUBSTRATE MATERIALS WITH THE FOLLOWING PROPERTIES:
- A. WOOD - MINIMUM SPECIFIC GRAVITY OF 0.55.
- B. CONCRETE -MINIMUM COMPRESSIVE STRENGTH OF 3000 PSI.
- C. GROUT-FILLED CMU- UNIT STRENGTH CONFORMS TO ASTM C-90 WITH MINIMUM COMPRESSIVE STRENGTH OF 2000 PSI AND GROUT CONFORMS TO ASTM C 476, MINIMUM GROUT COMPRESSIVE STRENGTH OF 2000 PSI.
- D. STEEL - MINIMUM YIELD STRENGTH OF 33 KSI. MINIMUM 18 GA. WALL THICKNESS.
- E. ALUMINUM - MINIMUM ALLOY 6063-T5. MINIMUM WALL THICKNESS OF 1/8" (0.125").

GENERAL NOTES:

1. THE PRODUCT SHOWN HEREIN IS DESIGNED AND MANUFACTURED TO COMPLY WITH THE CURRENT FLORIDA BUILDING CODE (FBC), EXCLUDING HVHZ AND HAS BEEN EVALUATED ACCORDING TO THE FOLLOWING:
- AAMA/WDMA/CSA 101/I.S.2/A440-11
2. ADEQUACY OF THE EXISTING STRUCTURAL CONCRETE/MASONRY AND 2X FRAMING AS A MAIN WIND FORCE RESISTING SYSTEM CAPABLE OF WITHSTANDING AND TRANSFERRING APPLIED PRODUCT LOADS TO THE FOUNDATION IS THE RESPONSIBILITY OF THE ENGINEER OR ARCHITECT OF RECORD FOR THE PROJECT OF INSTALLATION.
3. 1X AND 2X BUCKS (WHEN USED) SHALL BE DESIGNED AND ANCHORED TO PROPERLY TRANSFER ALL LOADS TO THE STRUCTURE. BUCK DESIGN AND INSTALLATION IS THE RESPONSIBILITY OF THE ENGINEER OR ARCHITECT OF RECORD FOR THE PROJECT OF INSTALLATION.
4. THE INSTALLATION DETAILS DESCRIBED HEREIN ARE GENERIC AND MAY NOT REFLECT ACTUAL CONDITIONS FOR A SPECIFIC SITE. IF SITE CONDITIONS CAUSE INSTALLATION TO DEVIATE FROM THE REQUIREMENTS DETAILED HEREIN, A LICENSED ENGINEER OR ARCHITECT SHALL PREPARE SITE SPECIFIC DOCUMENTS FOR USE WITH THIS DOCUMENT IN NON-HVHZ AREAS.
5. APPROVED IMPACT PROTECTIVE SYSTEM IS REQUIRED ON THIS PRODUCT IN AREAS REQUIRING IMPACT RESISTANCE.
6. WINDOW FRAME MATERIAL: WOOD
WINDOW CLADDING MATERIAL: ALUMINUM 6063-T5
8. GLASS SHALL MEET THE REQUIREMENTS OF ASTM E 1300 GLASS CHARTS. SEE SHEET 2 FOR GLAZING DETAILS.

TABLE OF CONTENTS		
SHEET	REVISION	SHEET DESCRIPTION
1	-	INSTALLATION & GENERAL NOTES
2	-	ELEVATIONS, ANCHOR LAYOUTS & GLAZING DETAILS
3	-	ELEVATIONS & ANCHOR LAYOUTS
4	-	NAIL FIN INSTALLATION SECTIONS
5	-	THROUGH FRAME & CLIP INSTALLATION SECTIONS
6	-	CLIP INSTALLATION SECTIONS
7	-	MULLION INSTALLATION SECTIONS

DESIGN PRESSURE TABLE						
TYP. OVERALL SIZE		PRODUCT TYPE	DESIGN PRESSURE	CONFIGURATION	INSTALLATION METHOD	IMPACT RATING
WIDTH	HEIGHT					
30"	96"	CRANK-OUT WINDOW	+65/-65 PSF	"X"	CLIP, THROUGH FRAME OR NAIL FIN	NON-IMPACT
42"	66"		+60/-60 PSF	"X"		
36"	78"		+50/-50 PSF	"X"		
110"	72"		+65/-65 PSF	"XXX"		
42"	72"		+40/-40 PSF	"X"		
36"	84"		+40/-40 PSF	"X"		
36"	84"		+50/-50 PSF	"X"		
36"	84"		+65/-65 PSF	"X"		
110"	84"		+65/-65 PSF	"XXX"		
36"	78"	PUSH-OUT WINDOW	+40/-40 PSF	"X"		
36"	72"		+50/-50 PSF	"X"		
110"	72"		+50/-50 PSF	"XXX"		
36"	84"		+65/-65 PSF	"X"		
110"	84"		+65/-65 PSF	"XXX"		
36"	84"		+65/-65 PSF	"XXX"		

NOTE:

THE DIFFERENCE IN PRESSURE FOR SIMILAR SIZES ARE DUE TO THE DIFFERENCE IN THICKNESS OF THE GLASS. SEE SHEET 2 FOR GLASS DETAIL AND GLAZING NOTES

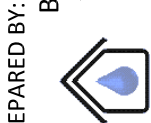


WINDSOR WINDOWS & DOORS

900 S. 19TH STREET.
WEST DES MOINES, IA 50265
PH: (515)223-6660 FAX: (515)224-1938

TITLE: PINNACLE SELECT CLAD CASEMENT (NON-IMPACT)

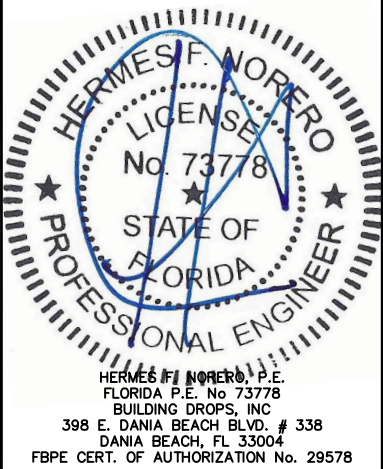
INSTALLATION AND GENERAL NOTES



PREPARED BY: BUILDING DROPS, INC.
398 E. DANIA BEACH BLVD., STE. 338
DANIA BEACH, FL 33004
PH: (954)399-8478
FAX: (954)744-4738
WEB: www.buildingdrops.com

REMARKS	BY	DATE

THE INSTALLATION DETAILS DESCRIBED HEREIN ARE GENERIC AND MAY NOT REFLECT ACTUAL CONDITIONS FOR A SPECIFIC SITE. IF SITE CONDITIONS CAUSE INSTALLATION TO DEVIATE FROM THE REQUIREMENTS DETAILED HEREIN, A LICENSED ENGINEER OR ARCHITECT SHALL PREPARE SITE SPECIFIC DOCUMENTS FOR USE WITH THIS DOCUMENT.



FL #:

FL14858

DATE: 06.12.18

DWG. BY: RV

CHK. BY: HFN

SCALE: NTS

DWG. #: WWD030

SHEET:


1

OF 7



- NOTES:**
- GLASS THICKNESS AND TYPE SHALL COMPLY WITH ASTM E 1300 REQUIREMENT GLASS CHARTS.
 - *FOR GLASS THICKNESS UP TO 3.9 mm, USE QUANEX FOAM SUPER SPACER IG SPACER, FOR GLASS THICKNESS OVER 3.9 mm USE CARDINAL ENDURE STAINLESS STEEL IG SPACER.
 - INSTALLATIONS HIGHER THAN 30' ABOVE GRADE SHALL BE SAFETY GLAZED IN ACCORDANCE WITH FBC REQUIREMENTS.

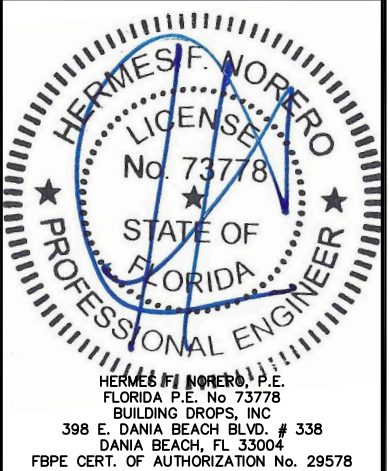
TITLE: PINNACLE SELECT CLAD CASEMENT (NON-IMPACT)



BUILDING DROPS, INC.
398 E. DANIA BEACH BLVD., STE. 338
DANIA BEACH, FL 33004
PH: (954)399-8478
FAX: (954)744.4738
WEB: www.buildingdrops.com

REMARKS	BY	DATE

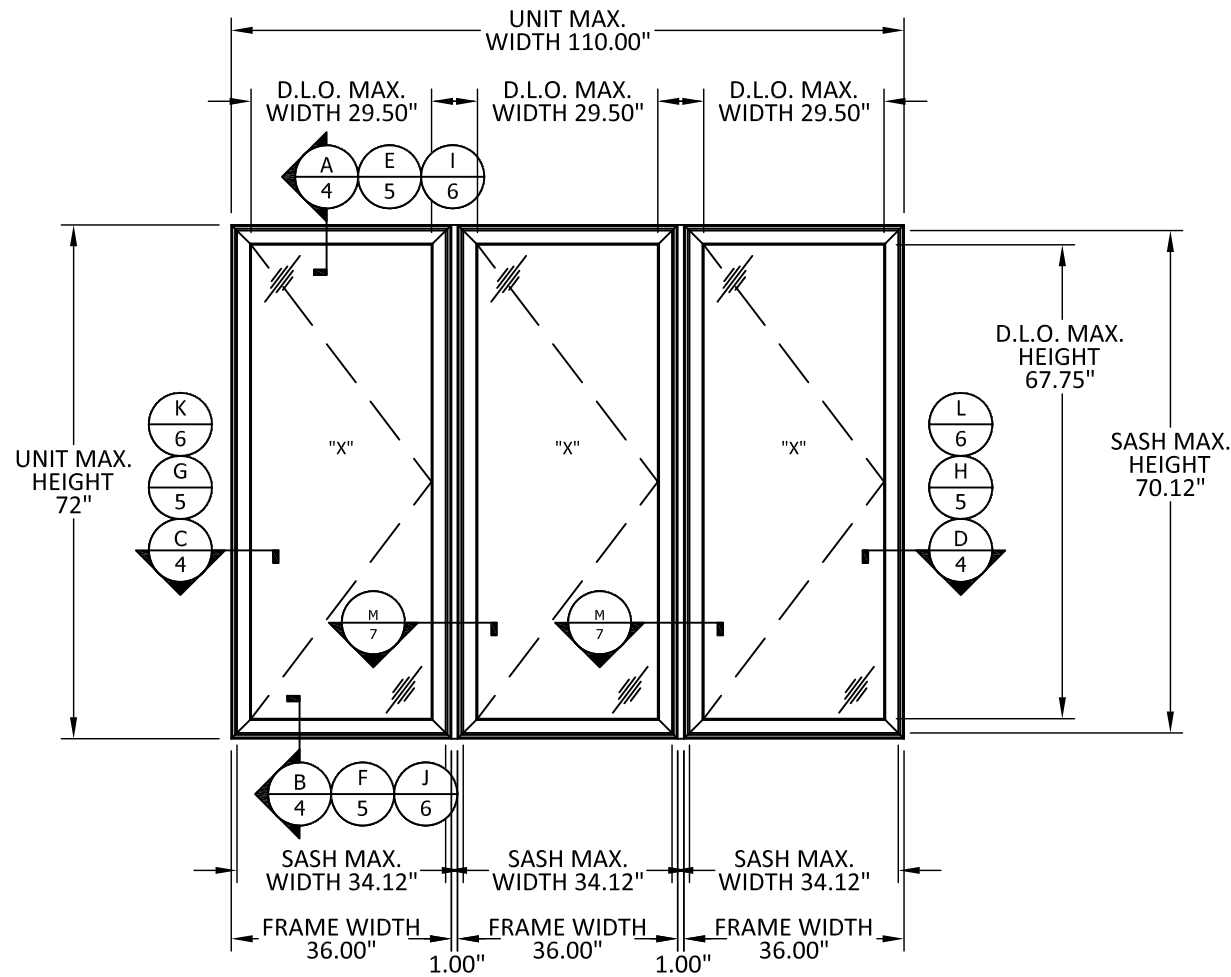
THE INSTALLATION DETAILS DESCRIBED HEREIN ARE GENERIC AND MAY NOT REFLECT ACTUAL CONDITIONS FOR A SPECIFIC SITE. IF SITE CONDITIONS CAUSE INSTALLATION TO DEVIATE FROM THE REQUIREMENTS DETAILED HEREIN, A LICENSED ENGINEER OR ARCHITECT SHALL PREPARE SITE SPECIFIC DOCUMENTS FOR USE WITH THIS DOCUMENT.



FL #:	
FL14858	
DATE: 06.12.18	
DWG. BY: RV	CHK. BY: HFN
SCALE: NTS	
DWG. #: WWD030	
SHEET:	

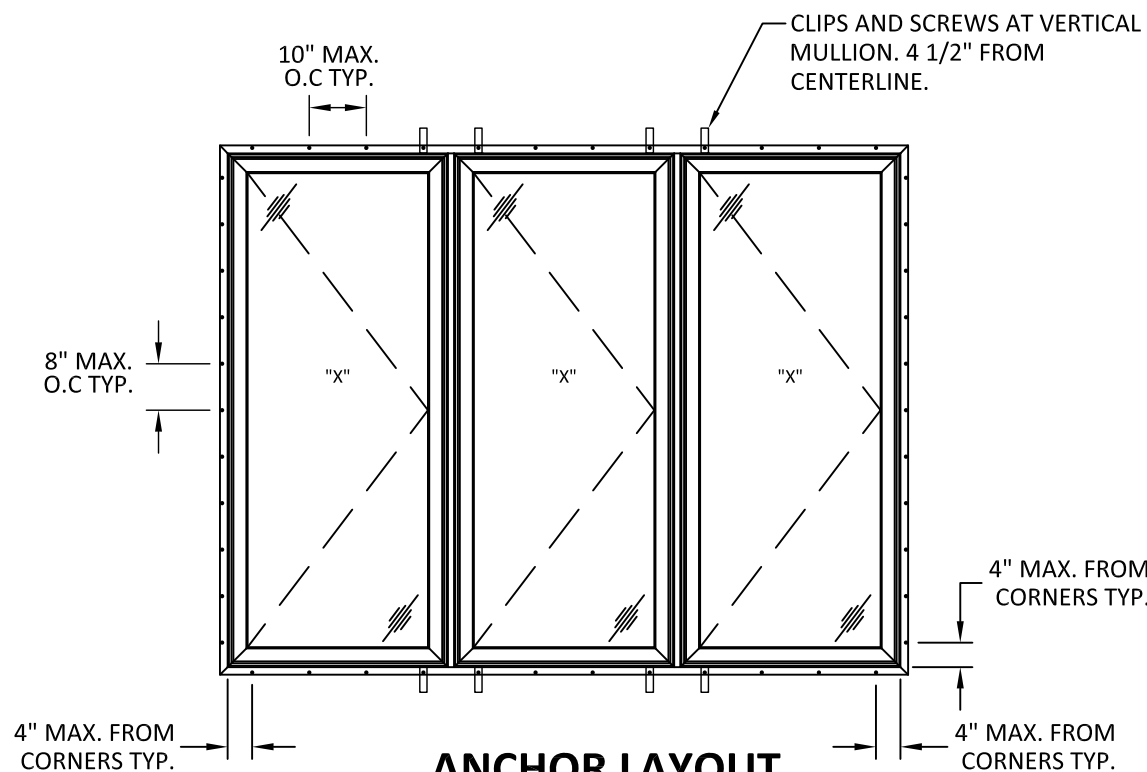
3/13/2019 8:22 AM

s:\projects\windsor windows and doors\fbc-submittal - fl14858.1 - fbc-submittal - fl14858.1 - pinnacle select aluminum clad wood casement.dwg



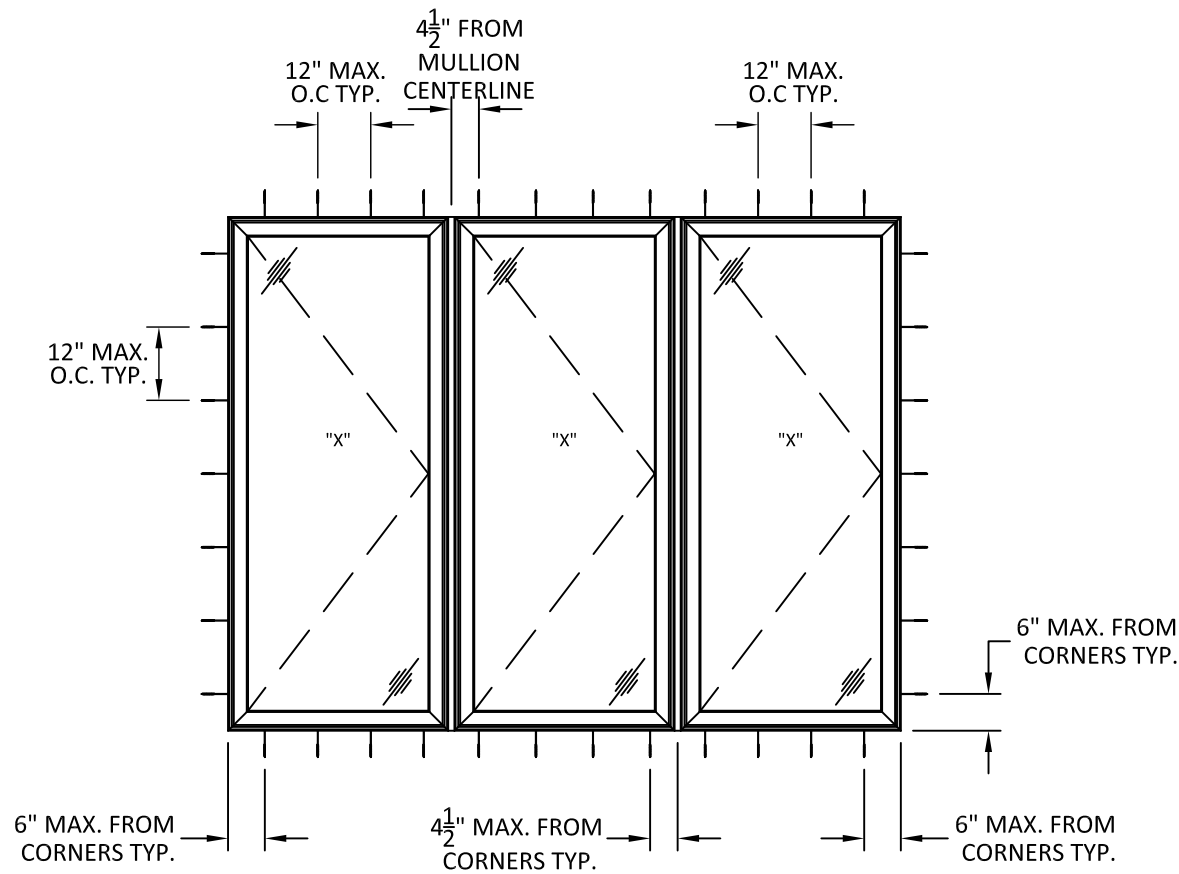
TYPICAL ELEVATION

CASEMENT



ANCHOR LAYOUT

NAIL FIN INSTALLATION



ANCHOR LAYOUT

CLIP OR THROUGH FRAME INSTALLATION



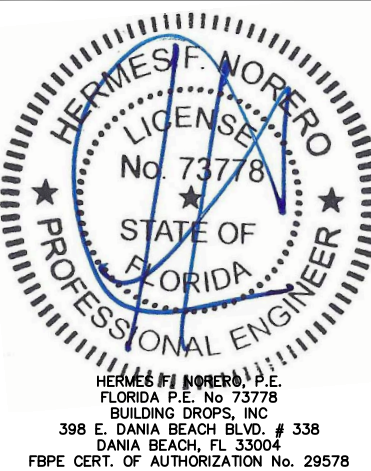
WINDSOR WINDOWS & DOORS

900 S. 19TH STREET.
WEST DES MOINES, IA 50265
PH: (515)223-6660 FAX: (515)224-1938

TITLE:	PINNACLE SELECT CLAD CASEMENT (NON-IMPACT)
	ELEVATIONS & ANCHOR LAYOUT
PREPARED BY:	BUILDING DROPS, INC.
	398 E. DANIA BEACH BLVD., STE. 338 DANIA BEACH, FL 33004 PH: (954)399-8478 FAX: (954)744-4738 WEB: www.buildingdrops.com

REMARKS	BY	DATE

THE INSTALLATION DETAILS DESCRIBED HEREIN ARE GENERIC AND MAY NOT REFLECT ACTUAL CONDITIONS FOR A SPECIFIC SITE. IF SITE CONDITIONS CAUSE INSTALLATION TO DEVIATE FROM THE REQUIREMENTS DETAILED HEREIN, A LICENSED ENGINEER OR ARCHITECT SHALL PREPARE SITE SPECIFIC DOCUMENTS FOR USE WITH THIS DOCUMENT.



FL #:

FL14858

DATE: 06.12.18

DWG. BY: RV
CHK. BY: HFN

SCALE: NTS

DWG. #: WWD030

SHEET:

3

OF 7

TITLE: PINNACLE SELECT CLAD CASEMENT (NON-IMPACT)
NAIL FIN INSTALLATION SECTIONS

PREPARED BY: BUILDING DROPS, INC.
398 E. DANIA BEACH BLVD., STE. 338
DANIA BEACH, FL 33004
PH: (954)399-8478
FAX: (954)744-4738
WEB: www.buildingdrops.com

REMARKS	BY	DATE

THE INSTALLATION DETAILS DESCRIBED HEREIN ARE GENERIC AND MAY NOT REFLECT ACTUAL CONDITIONS FOR A SPECIFIC SITE. IF SITE CONDITIONS CAUSE INSTALLATION TO DEVIATE FROM THE REQUIREMENTS DETAILED HEREIN, A LICENSED ENGINEER OR ARCHITECT SHALL PREPARE SITE SPECIFIC DOCUMENTS FOR USE WITH THIS DOCUMENT.



FL #: FL14858

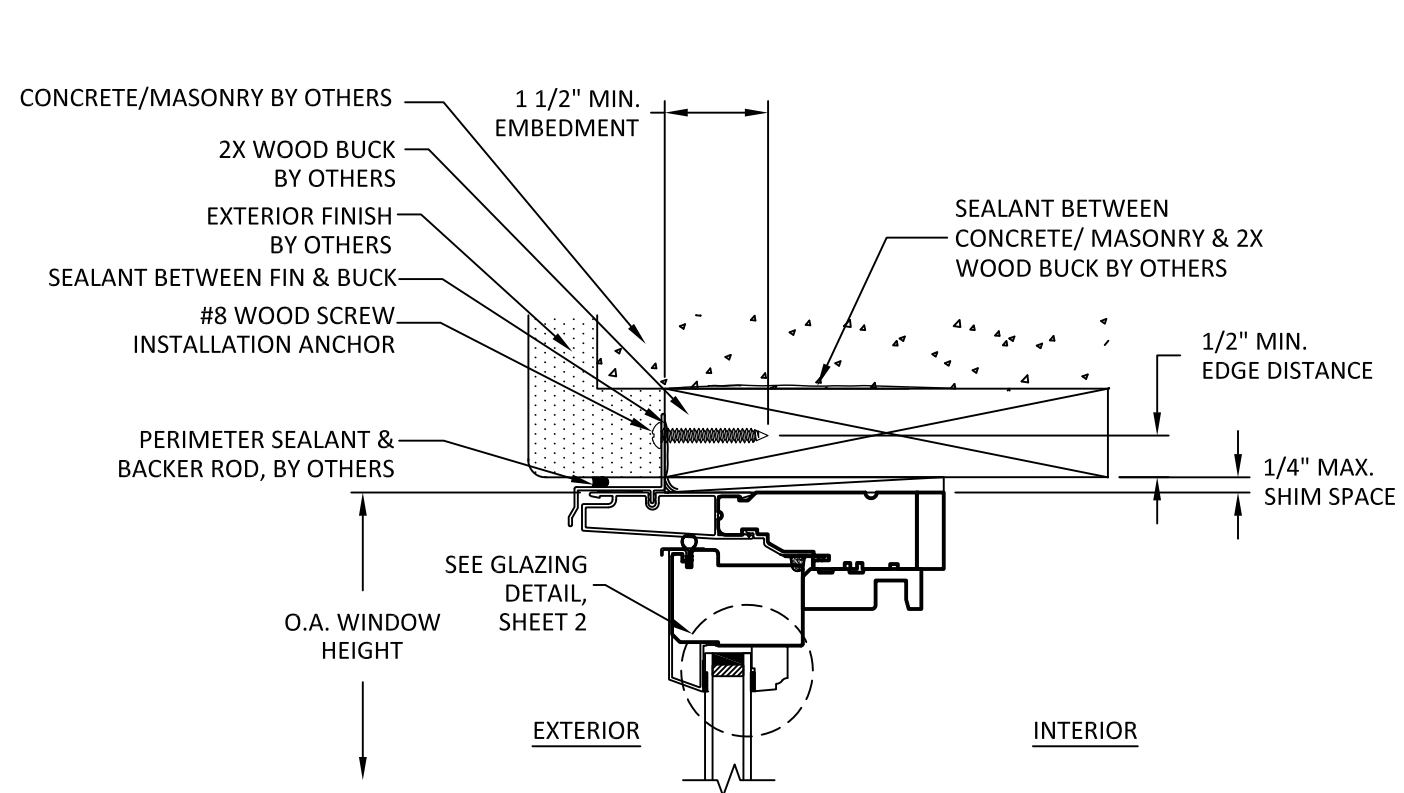
DATE: 06.12.18

DWG. BY: RV **CHK. BY:** HFN

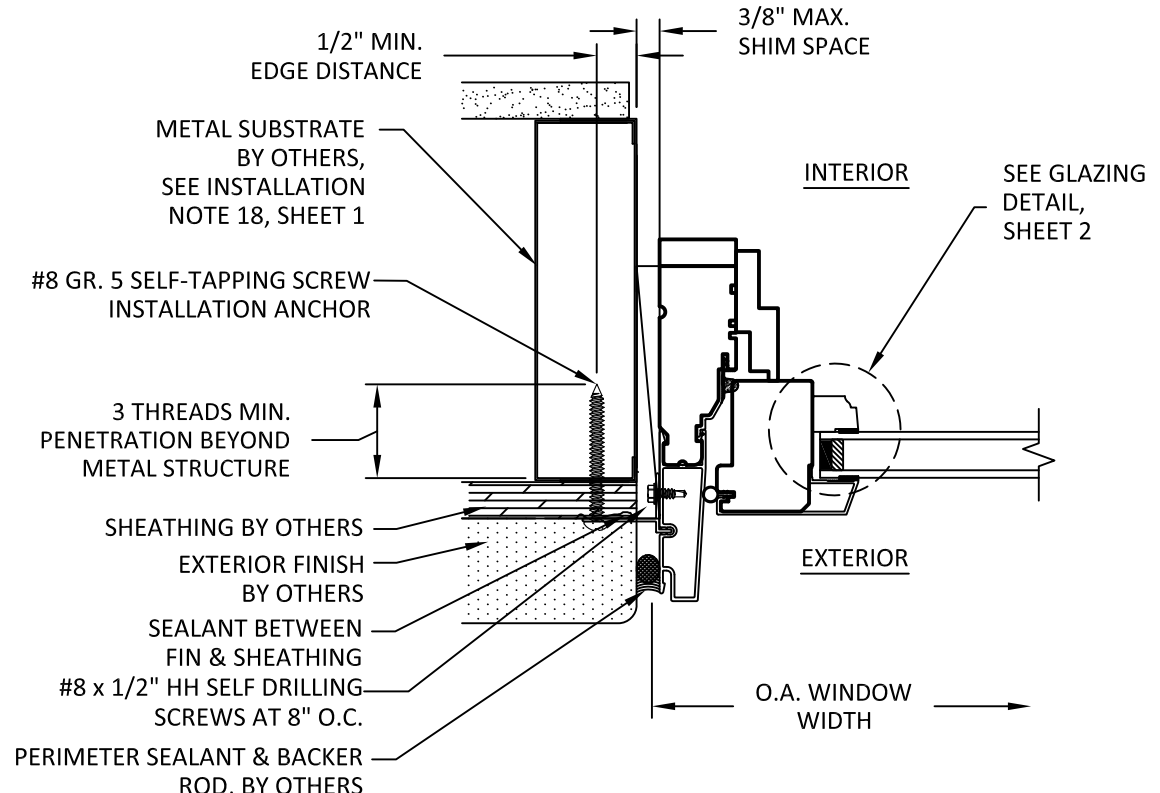
SCALE: NTS

DWG. #: WWD030

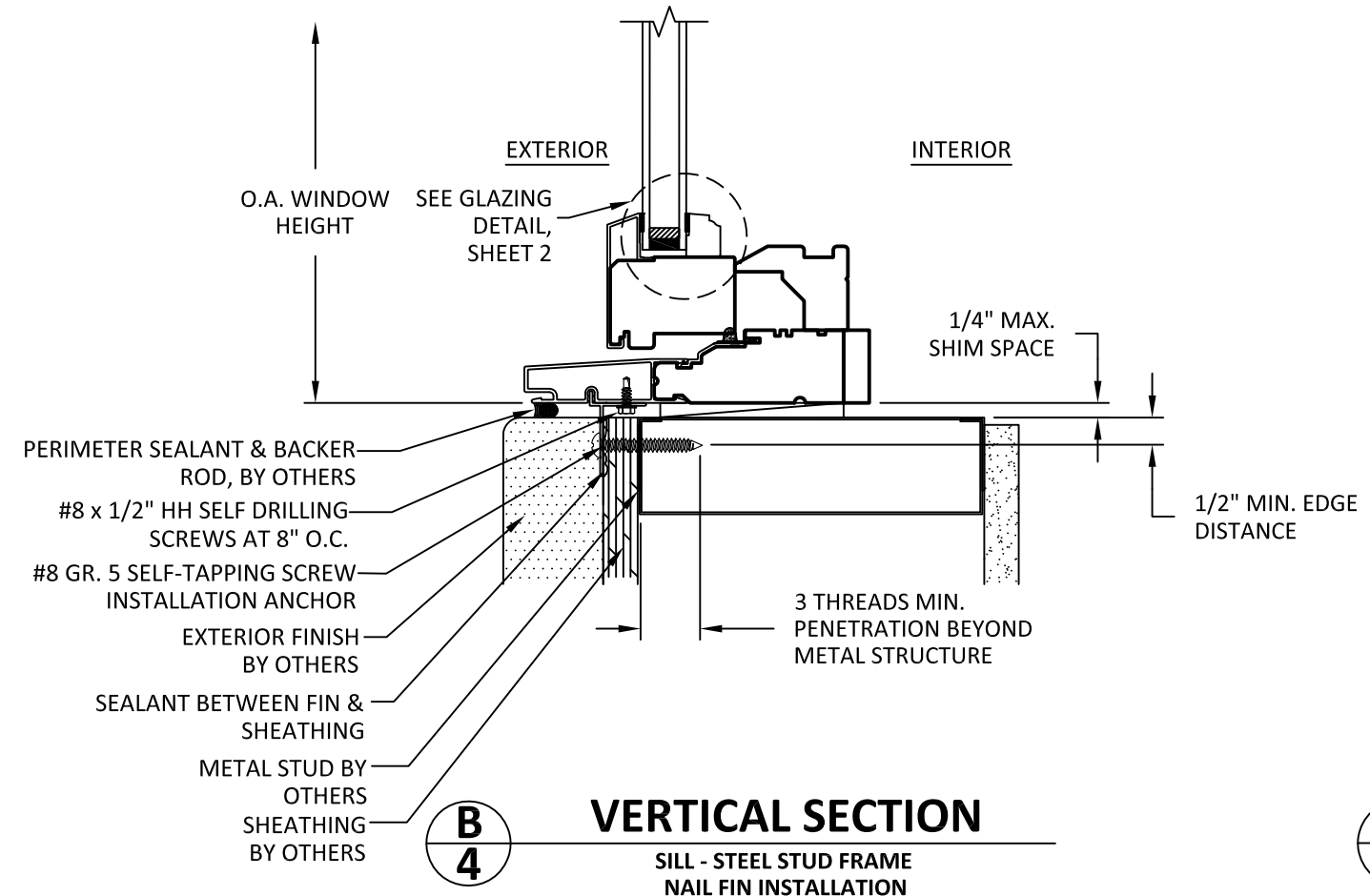
SHEET: 4 OF 7



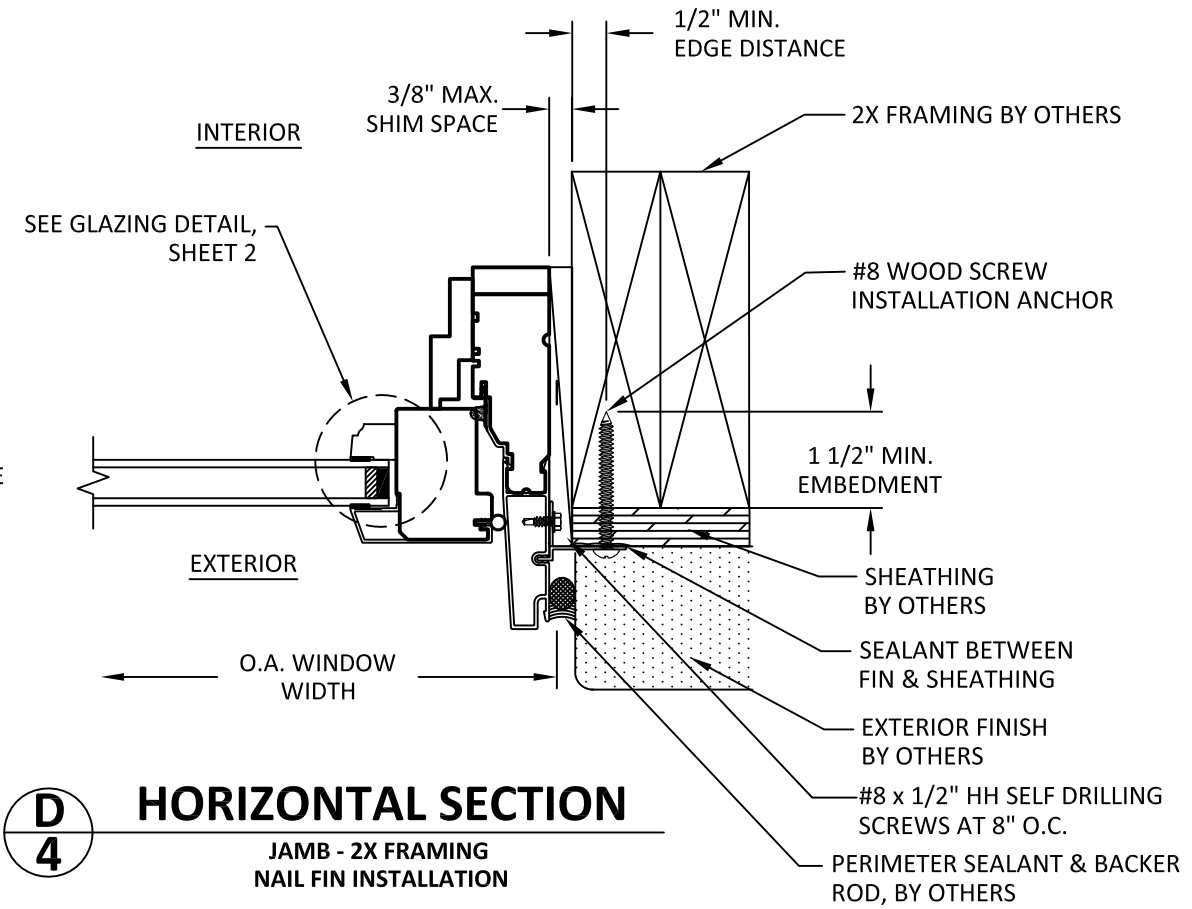
A
4 **VERTICAL SECTION**
HEAD - 2X WOOD BUCK
NAIL FIN INSTALLATION



C
4 **HORIZONTAL SECTION**
JAMB - METAL FRAME
NAIL FIN INSTALLATION



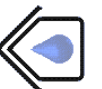
B
4 **VERTICAL SECTION**
SILL - STEEL STUD FRAME
NAIL FIN INSTALLATION



D
4 **HORIZONTAL SECTION**
JAMB - 2X FRAMING
NAIL FIN INSTALLATION

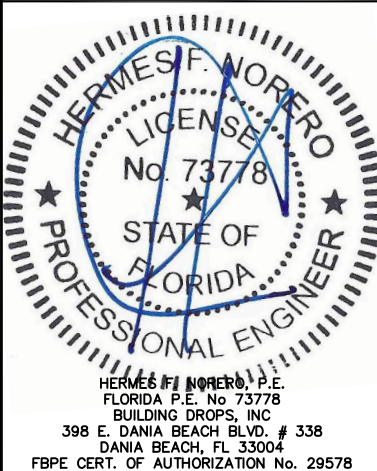
TITLE: PINNACLE SELECT CLAD CASEMENT (NON-IMPACT) THROUGH FRAME & CLIP INSTALLATION SECTIONS

PREPARED BY: BUILDING DROPS, INC.
398 E. DANIA BEACH BLVD., STE. 338
DANIA BEACH, FL 33004
PH: (954)399-8478
FAX: (954)744-4738
WEB: www.buildingdrops.com



REMARKS	BY	DATE

THE INSTALLATION DETAILS DESCRIBED HEREIN ARE GENERIC AND MAY NOT REFLECT ACTUAL CONDITIONS FOR A SPECIFIC SITE. IF SITE CONDITIONS CAUSE INSTALLATION TO DEVIATE FROM THE REQUIREMENTS DETAILED HEREIN, A LICENSED ENGINEER OR ARCHITECT SHALL PREPARE SITE SPECIFIC DOCUMENTS FOR USE WITH THIS DOCUMENT.



FL #: **FL14858**

DATE: **06.12.18**

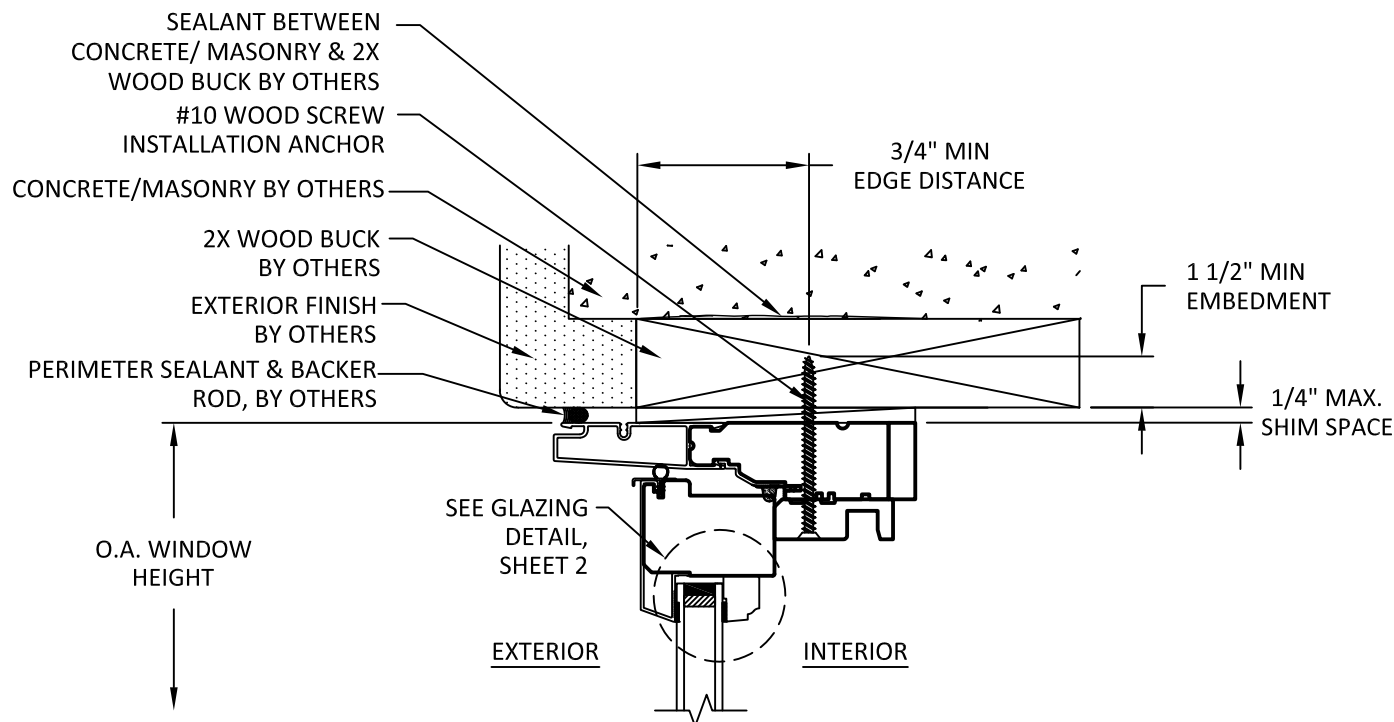
DWG. BY: **RV** CHK. BY: **HFN**

SCALE: **NTS**

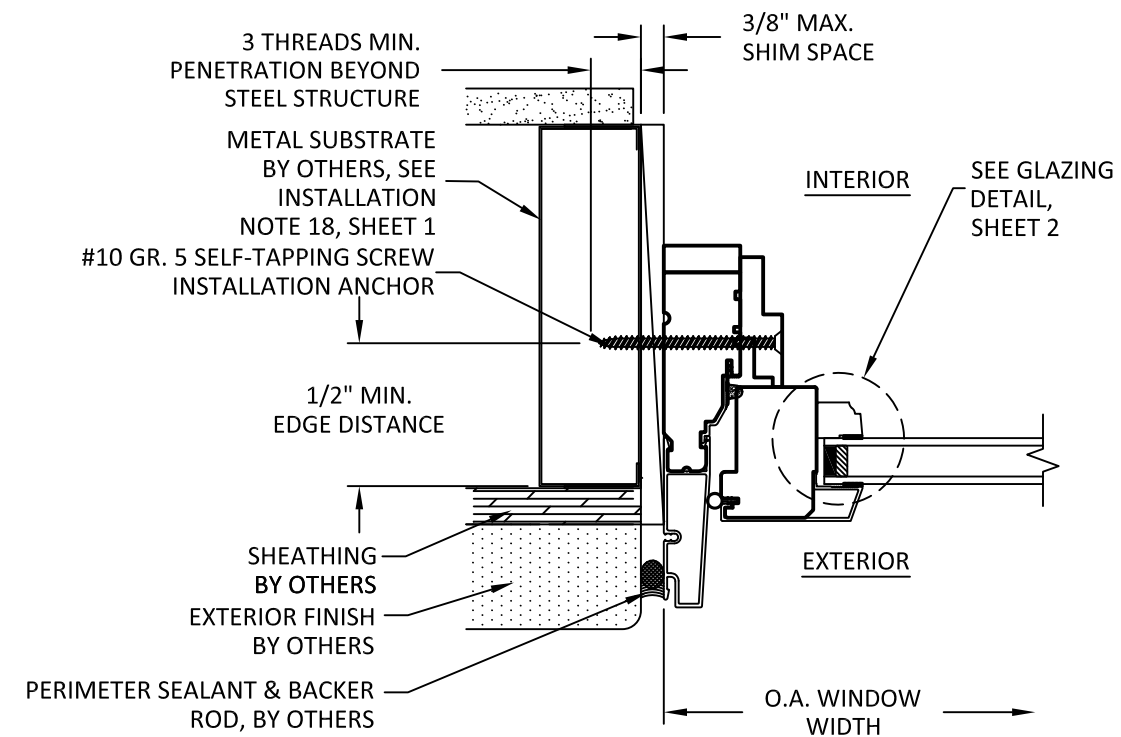
DWG. #: **WWD030**

SHEET: **5**

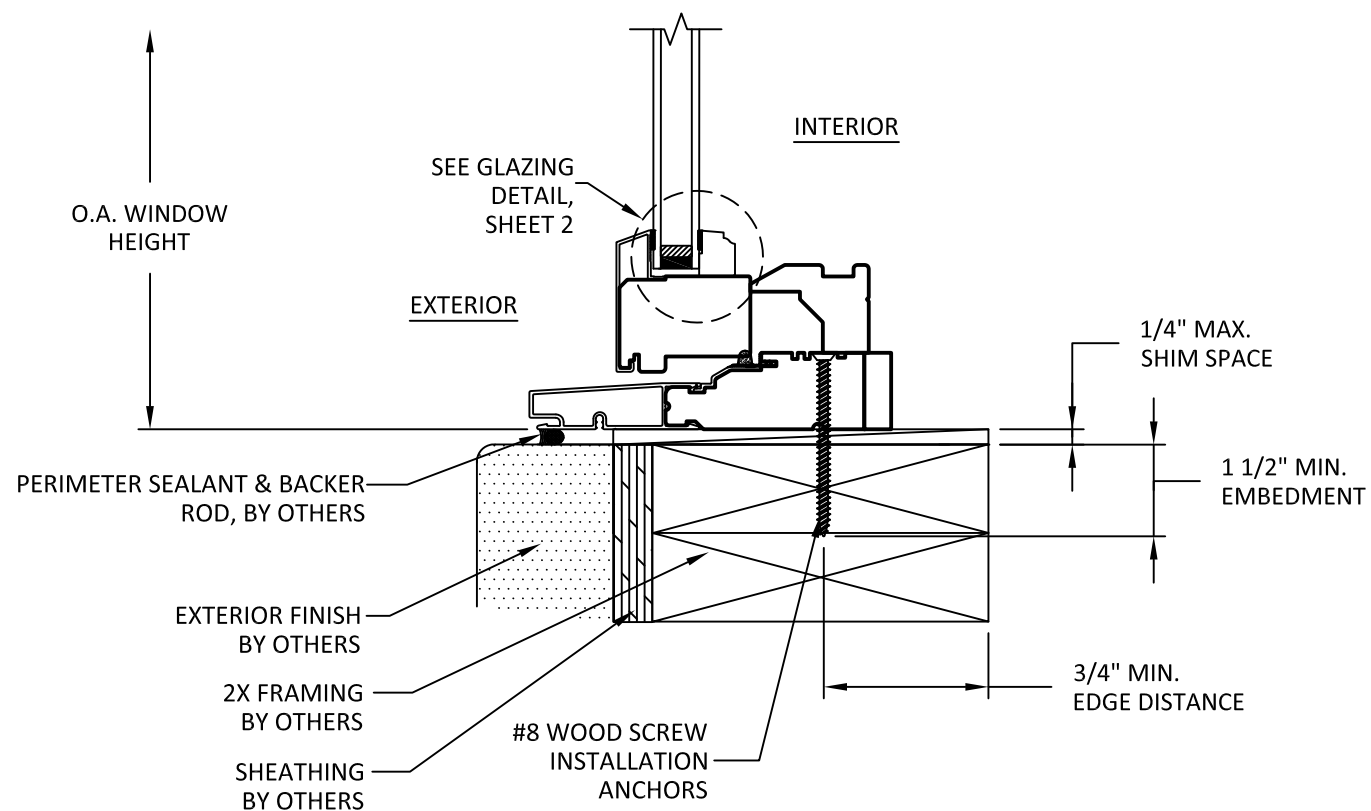
OF 7



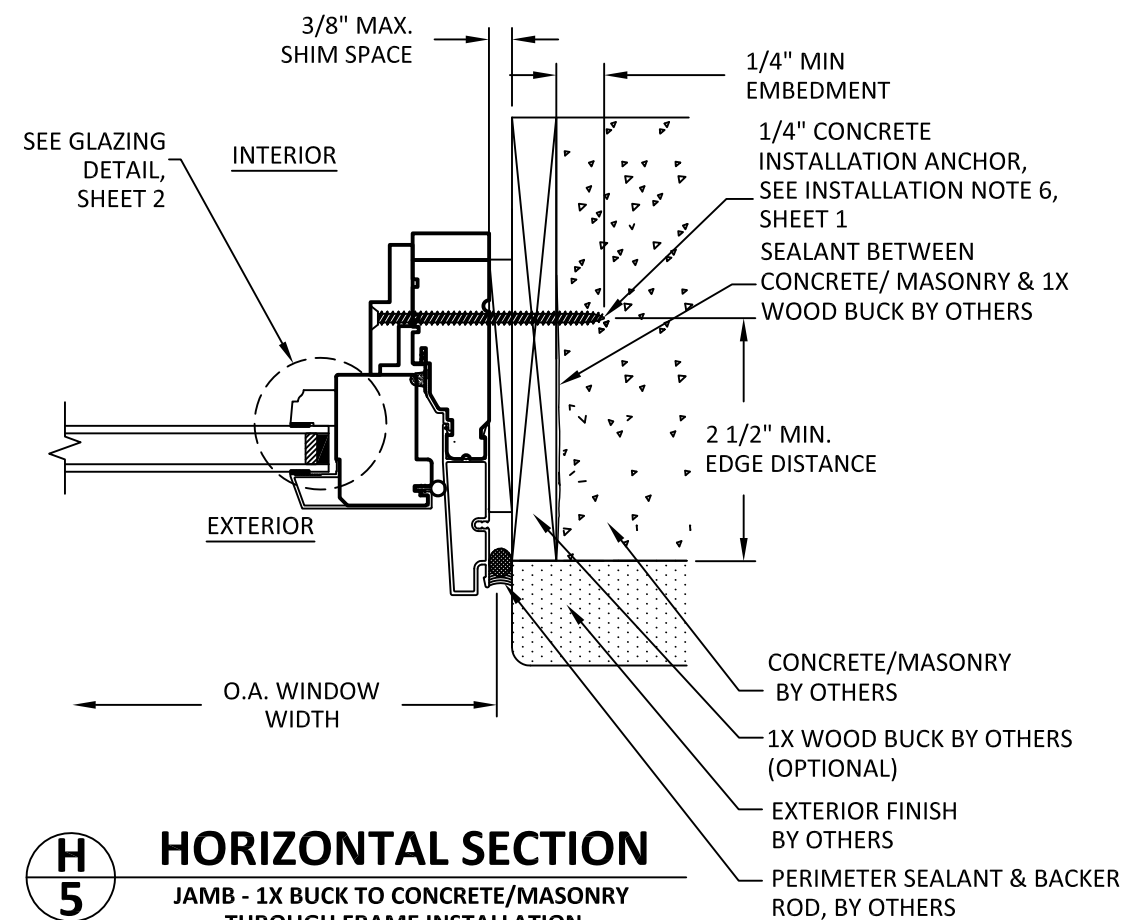
E5 VERTICAL SECTION
HEAD - 2X WOOD BUCK
THROUGH FRAME INSTALLATION



G5 HORIZONTAL SECTION
JAMB - METAL STUD FRAME
THROUGH FRAME INSTALLATION



F5 VERTICAL SECTION
SILL - 2X FRAMING
THROUGH FRAME INSTALLATION



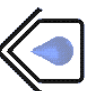
H5 HORIZONTAL SECTION
JAMB - 1X BUCK TO CONCRETE/MASONRY
THROUGH FRAME INSTALLATION

TITLE: PINNACLE SELECT CLAD
CASEMENT (NON-IMPACT)

CLIP INSTALLATION SECTIONS

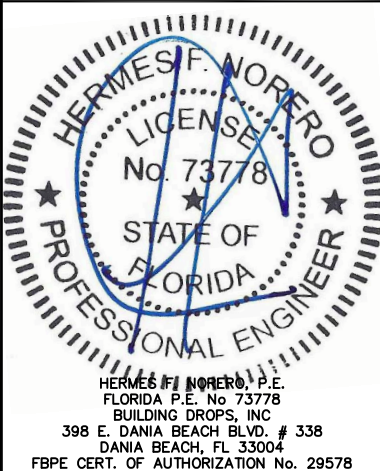
PREPARED BY: BUILDING DROPS, INC.

398 E. DANIA BEACH BLVD., STE. 338
DANIA BEACH, FL 33004
PH: (954)399-8478
FAX: (954)744-4738
WEB: www.buildingdrops.com



REMARKS	BY	DATE

THE INSTALLATION DETAILS DESCRIBED HEREIN ARE GENERIC AND MAY NOT REFLECT ACTUAL CONDITIONS FOR A SPECIFIC SITE. IF SITE CONDITIONS CAUSE INSTALLATION TO DEVIATE FROM THE REQUIREMENTS DETAILED HEREIN, A LICENSED ENGINEER OR ARCHITECT SHALL PREPARE SITE SPECIFIC DOCUMENTS FOR USE WITH THIS DOCUMENT.



FL #: **FL14858**

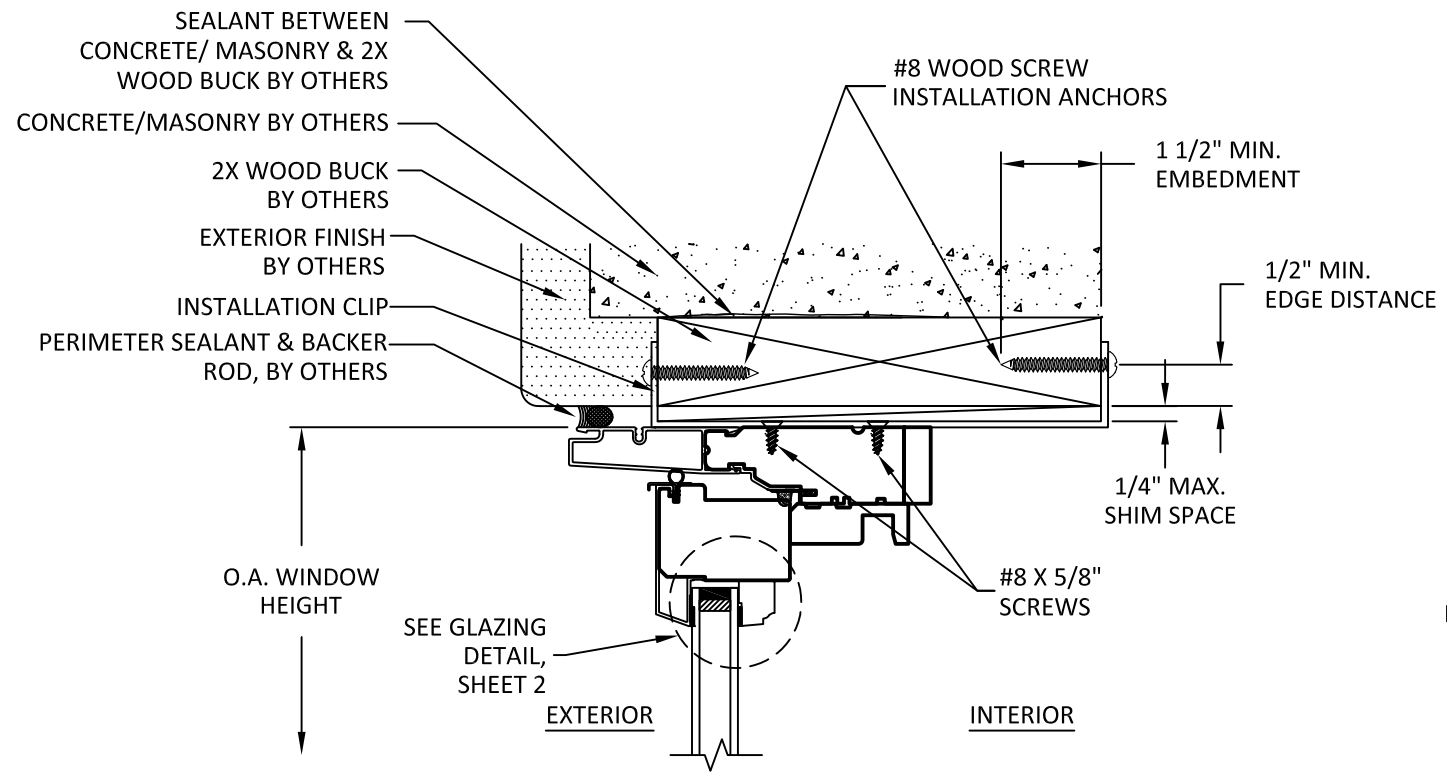
DATE: **06.12.18**

DWG. BY: **RV** CHK. BY: **HFN**

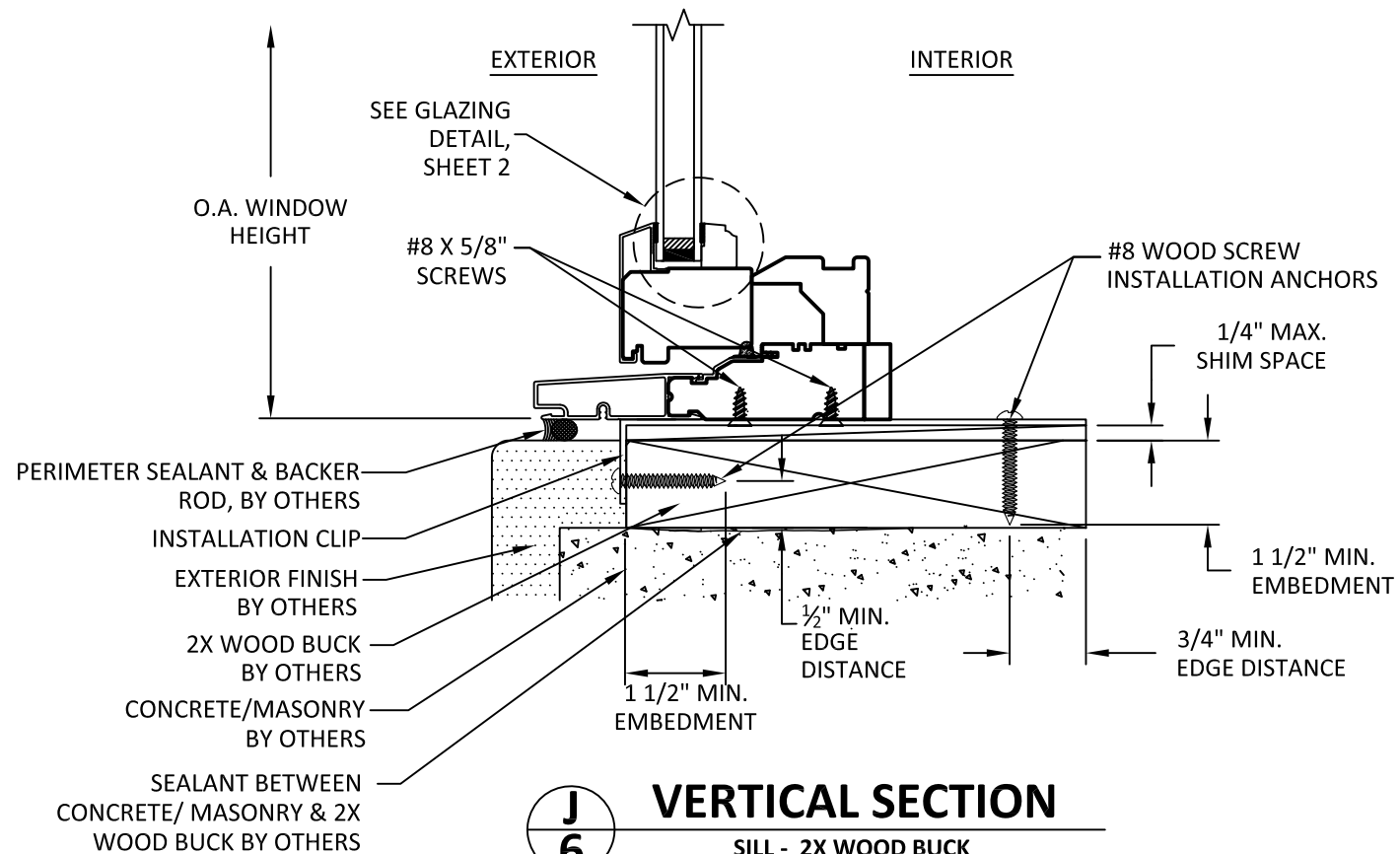
SCALE: **NTS**

DWG. #: **WWD030**

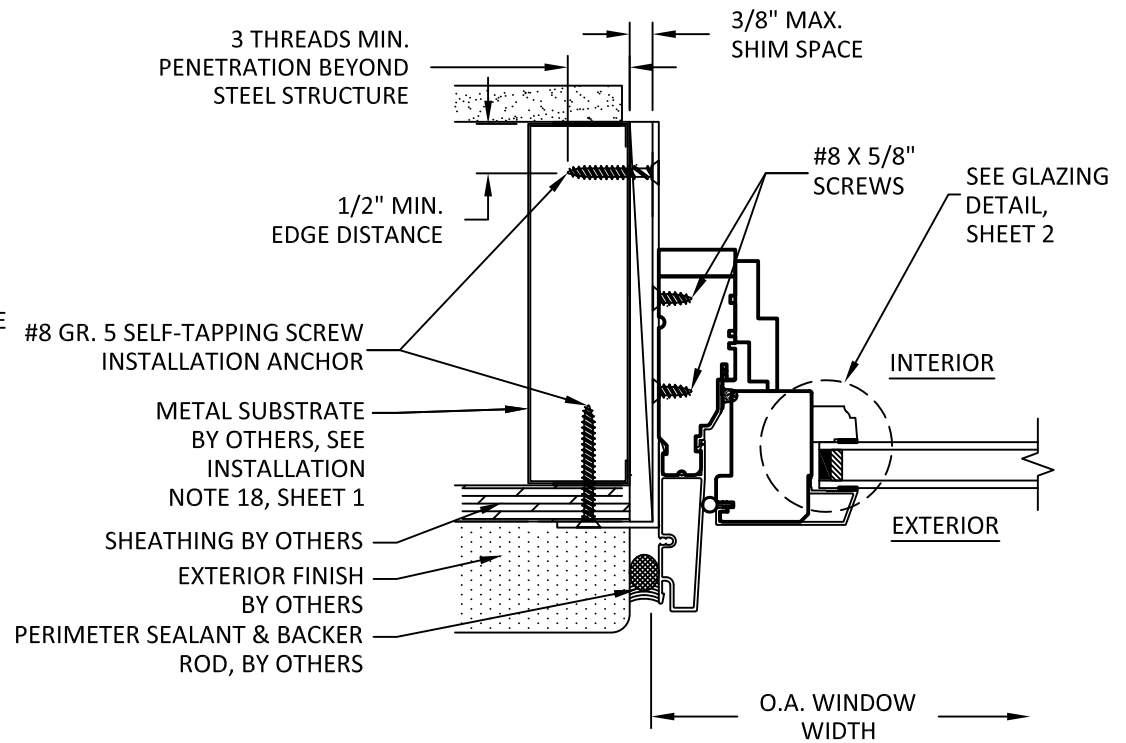
SHEET: **6**



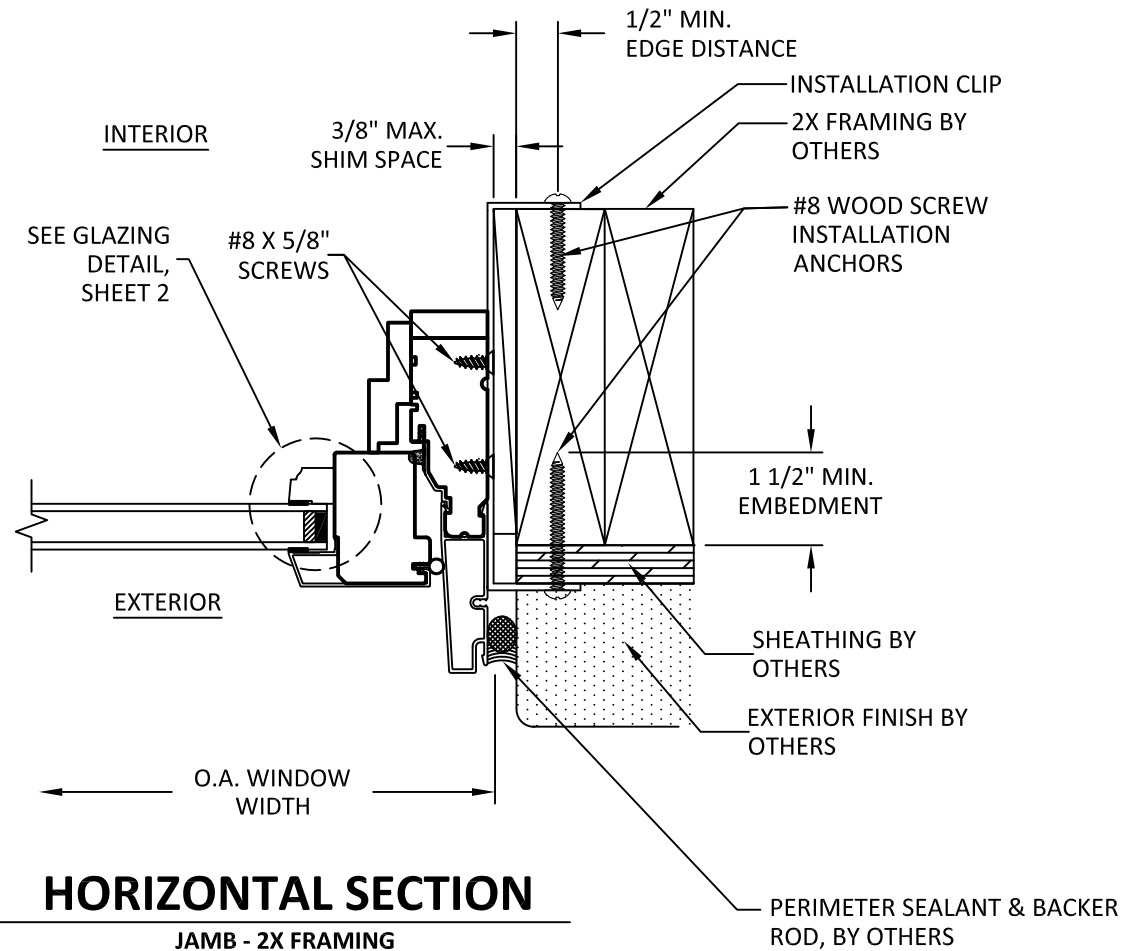
I
6 **VERTICAL SECTION**
HEAD - 2X WOOD BUCK
STANDARD CLIP INSTALLATION



J
6 **VERTICAL SECTION**
SILL - 2X WOOD BUCK
ALTERNATE CLIP INSTALLATION

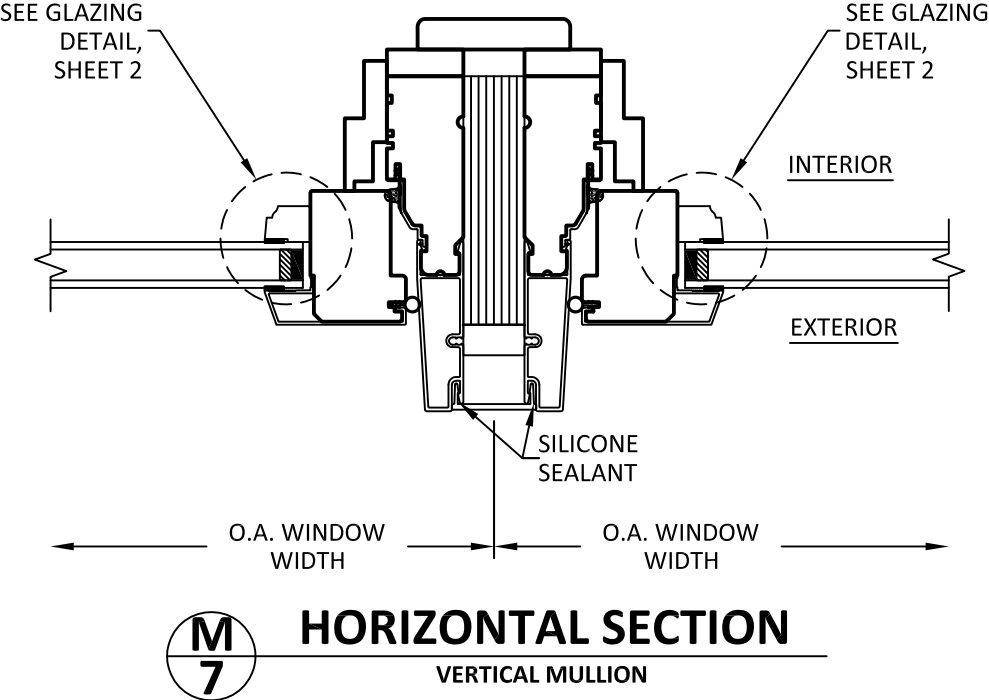


K
6 **HORIZONTAL SECTION**
JAMB - METAL SUBSTRATE
ALTERNATE CLIP INSTALLATION



L
6 **HORIZONTAL SECTION**
JAMB - 2X FRAMING
STANDARD CLIP INSTALLATION

s:\projects\windsor windows and doors\fbc-submittal - fl14858.1 - fbc-submittal - fl14858.1 pinnacle select aluminum clad wood casements, fl14858.2 pinnacle select aluminum clad dwgs\wwd030.dwg 3/13/2019 8:22 AM




**WINDSOR WINDOWS
& DOORS**
900 S. 19TH STREET.
WEST DES MOINES, IA 50265
PH: (515)223-6660 FAX: (515)224-1938

TITLE:

PINNACLE SELECT CLAD
CASEMENT (NON-IMPACT)

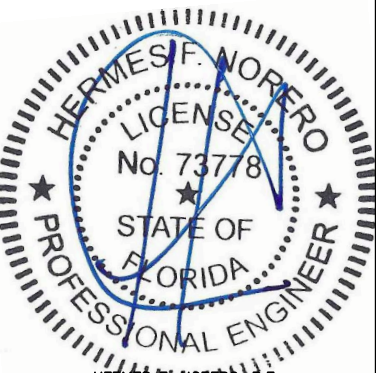
MULLION INSTALLATION
SECTIONS

PREPARED BY:


BUILDING DROPS, INC.
398 E. DANIA BEACH BLVD., STE. 338
DANIA BEACH, FL 33004
PH: (954)399-8478
FAX: (954)744-4738
WEB: www.buildingdrops.com

REMARKS	BY	DATE

THE INSTALLATION DETAILS DESCRIBED HEREIN ARE GENERIC AND MAY NOT REFLECT ACTUAL CONDITIONS FOR A SPECIFIC SITE. IF SITE CONDITIONS CAUSE INSTALLATION TO DEVIATE FROM THE REQUIREMENTS DETAILED HEREIN, A LICENSED ENGINEER OR ARCHITECT SHALL PREPARE SITE SPECIFIC DOCUMENTS FOR USE WITH THIS DOCUMENT.



HERMES F. NORERO, P.E.
FLORIDA P.E. No. 73778
BUILDING DROPS, INC
398 E. DANIA BEACH BLVD. # 338
DANIA BEACH, FL 33004
FBPE CERT. OF AUTHORIZATION No. 29578

FL #:
FL14858

DATE: **06.12.18**

DWG. BY:
RV

CHK. BY:
HFN

SCALE: **NTS**

DWG. #: **WWD030**

SHEET:

7

OF 7