

s:\projects\windsor windows and doors\lbc-20-0521 - fbc submittal - add steel mulls to wz3 mull charts to fl21905\dwgs\wwd055.dwg 12/20/2020 6:46 PM

WINDSOR WINDOWS & DOORS

PINNACLE CLAD STEEL MULLION

(WZ3)(IMPACT)

INSTALLATION NOTES:

- ONE (1) INSTALLATION ANCHOR IS REQUIRED AT EACH ANCHOR LOCATION SHOWN.
- THE NUMBER OF INSTALLATION ANCHORS DEPICTED IS THE MINIMUM NUMBER OF ANCHORS TO BE USED FOR PRODUCT INSTALLATION OF THE MAXIMUM SIZE LISTED.
- INSTALL INDIVIDUAL INSTALLATION ANCHORS WITHIN A TOLERANCE OF ±1/2 INCH (I.E., WITHOUT CONSIDERATION OF TOLERANCES). TOLERANCES ARE NOT CUMULATIVE FROM ONE INSTALLATION ANCHOR TO THE NEXT.
- SHIM AS REQUIRED AT EACH INSTALLATION ANCHOR WITH LOAD BEARING SHIM(S). MAXIMUM ALLOWABLE SHIM STACK TO BE 1/4 INCH. SHIM WHERE SPACE OF 1/16 INCH OR GREATER OCCURS. SHIM(S) SHALL BE CONSTRUCTED OF HIGH DENSITY PLASTIC OR BETTER.
- REFER TO SHEETS 2 & 3 FOR INSTALLATION DETAILS, ANCHOR SELECTION, AND ANCHOR REQUIREMENTS.
- MINIMUM EMBEDMENT AND EDGE DISTANCE EXCLUDE WALL FINISHES, INCLUDING BUT NOT LIMITED TO STUCCO, FOAM, BRICK VENEER, AND SIDING.
- INSTALLATION ANCHORS AND ASSOCIATED HARDWARE MUST BE MADE OF CORROSION RESISTANT MATERIAL OR HAVE A CORROSION RESISTANT COATING.
- FOR HOLLOW BLOCK AND GROUT FILLED BLOCK, DO NOT INSTALL INSTALLATION ANCHORS INTO MORTAR JOINTS. EDGE DISTANCE IS MEASURED FROM FREE EDGE OF BLOCK OR EDGE OF MORTAR JOINT INTO FACE SHELL OF BLOCK.
- INSTALLATION ANCHORS SHALL BE INSTALLED IN ACCORDANCE WITH ANCHOR MANUFACTURER'S INSTALLATION INSTRUCTIONS, AND ANCHORS SHALL NOT BE USED IN SUBSTRATES WITH STRENGTHS LESS THAN THE MINIMUM STRENGTH SPECIFIED BY THE ANCHOR MANUFACTURER.
- INSTALLATION ANCHOR CAPACITIES FOR PRODUCTS HEREIN ARE BASED ON SUBSTRATE MATERIALS WITH THE FOLLOWING PROPERTIES:
 - WOOD - MINIMUM SPECIFIC GRAVITY OF 0.55.
 - CONCRETE - MINIMUM COMPRESSIVE STRENGTH OF 3000 PSI.
 - GROUT-FILLED CMU-UNIT STRENGTH CONFORMS TO ASTM C-90 WIT MINIMUM COMPRESSIVE STRENGTH OF 2000 PSI AND GROUT CONFORMS TO ASTM C476, MINIMUM GROUT COMPRESSIVE STRENGTH OF 2000 PSI.
 - STEEL - MINIMUM YIELD STRENGTH OF 33 KSI. MINIMUM 18 GA. WALL THICKNESS.
 - ALUMINUM- MINIMUM THICKNESS 1/8". MIN. 6063-T5

GENERAL NOTES:

- THE PRODUCT SHOWN HEREIN IS DESIGNED AND MANUFACTURED TO COMPLY WITH THE CURRENT EDITION OF THE FLORIDA BUILDING CODE (FBC) AND INTERNATIONAL BUILDING CODE (IBC), EXCLUDING HVHZ AND HAS BEEN EVALUATED ACCORDING TO THE FOLLOWING:
 - AAMA/WDMA/CSA 101/I.S.2/A440-11
 - AAMA 506-16
 - ASTM E1886-12
 - ASTM E1996-12
- ADEQUACY OF THE EXISTING STRUCTURAL CONCRETE/MASONRY AND 2X FRAMING AS A MAIN WIND FORCE RESISTING SYSTEM CAPABLE OF WITHSTANDING AND TRANSFERRING APPLIED PRODUCT LOADS TO THE FOUNDATION IS THE RESPONSIBILITY OF THE ENGINEER OR ARCHITECT OF RECORD FOR THE PROJECT OF INSTALLATION.
- 1X AND 2X BUCKS (WHEN USED) SHALL BE DESIGNED AND ANCHORED TO PROPERLY TRANSFER ALL LOADS TO THE STRUCTURE. BUCK DESIGN AND INSTALLATION IS THE RESPONSIBILITY OF THE ENGINEER OR ARCHITECT OF RECORD FOR THE PROJECT OF INSTALLATION.
- THE INSTALLATION DETAILS DESCRIBED HEREIN ARE GENERIC AND MAY NOT REFLECT ACTUAL CONDITIONS FOR A SPECIFIC SITE. IF SITE CONDITIONS CAUSE INSTALLATION TO DEVIATE FROM THE REQUIREMENTS DETAILED HEREIN, A LICENSED ENGINEER OR ARCHITECT SHALL PREPARE SITE SPECIFIC DOCUMENTS FOR USE WITH THIS DOCUMENT IN NON-HVHZ AREAS.
- APPROVED IMPACT PROTECTIVE SYSTEM **IS NOT REQUIRED** FOR THIS PRODUCT IN **ZONE 3 OR LESS**. INDIVIDUAL WINDOW UNITS MUST BE IMPACT RATED WHERE APPLICABLE.
- APPROVED IMPACT PROTECTIVE SYSTEM **IS REQUIRED** FOR THIS PRODUCT IN **WIND ZONE 4**.
- MULLION MATERIAL: A36 STEEL

TABLE OF CONTENTS		
SHEET	REVISION	SHEET DESCRIPTION
1	-	INSTALLATION & GENERAL NOTES
2	-	HORIZONTAL SECTION
3	-	MULLION NOTES, ANCHOR REQUIREMENTS & LAYOUT
4	-	HORIZONTAL MULLION SECTIONS
5	-	VERTICAL MULLION SECTIONS
6	-	DESIGN PRESSURE TABLES 1/4" STEEL MULLION
7	-	DESIGN PRESSURE TABLES 1/2" STEEL MULLION
8	-	DESIGN PRESSURE TABLES 3/4" STEEL MULLION
9	-	MULLION ASSEMBLIES



WINDSOR WINDOWS & DOORS
900 S. 19TH STREET.
WEST DES MOINES, IA 50265
PH: (515)223-6660 FAX: (515)224-1938

PINNACLE CLAD STEEL MULLION (WZ3)(IMPACT)

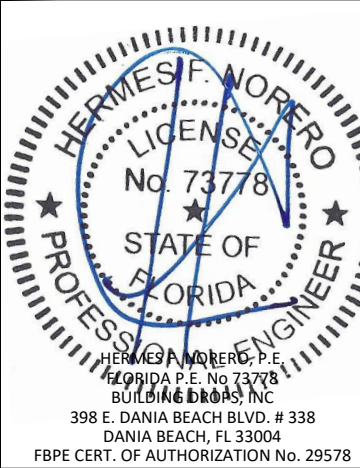
INSTALLATION & GENERAL NOTES

TITLE:

PREPARED BY:

BUILDING DROPS, INC.
398 E. DANIA BEACH BLVD., STE. 338
DANIA BEACH, FL 33004
PH: (954)399-8478
FAX: (954)744-4738
WEB: www.buildingdrops.com

REMARKS	BY	DATE
THE INSTALLATION DETAILS DESCRIBED HEREIN ARE GENERIC AND MAY NOT REFLECT ACTUAL CONDITIONS FOR A SPECIFIC SITE. IF SITE CONDITIONS CAUSE INSTALLATION TO DEVIATE FROM THE REQUIREMENTS DETAILED HEREIN, A LICENSED ENGINEER OR ARCHITECT SHALL PREPARE SITE SPECIFIC DOCUMENTS FOR USE WITH THIS DOCUMENT.		



FL #:

FL21905

DATE:

06.12.20

DWG. BY:

YC

CHK. BY:

HFN

SCALE:

NTS

DWG. #:

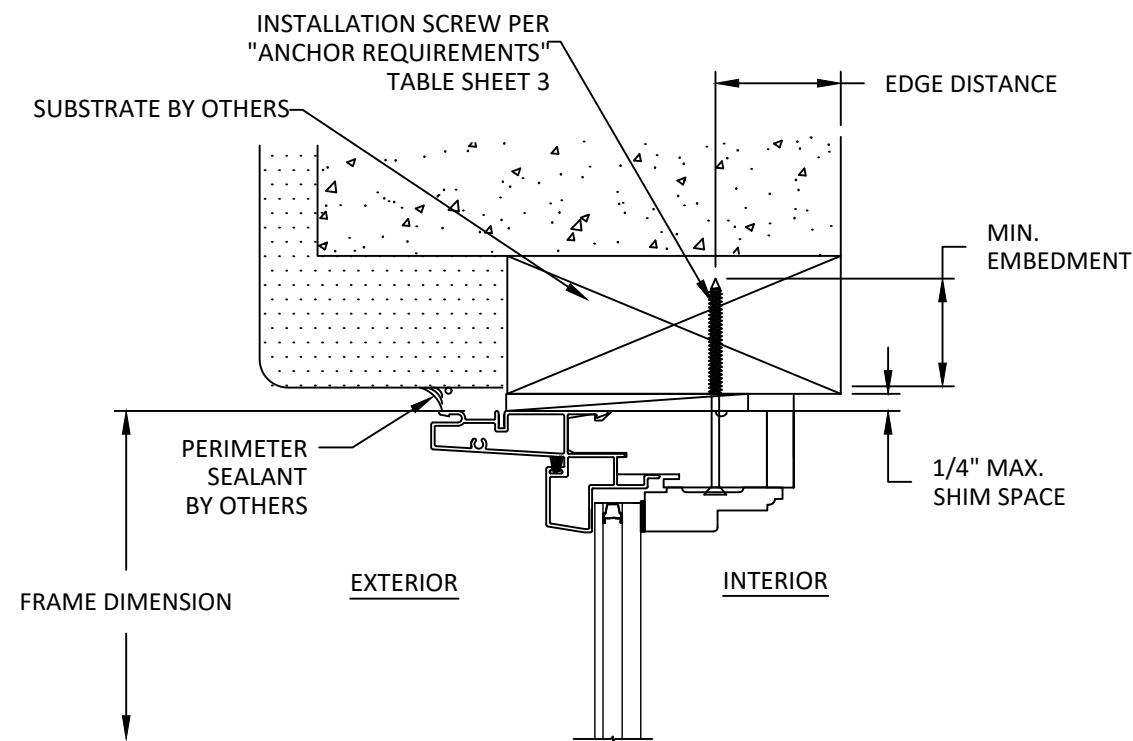
WWD055

SHEET:

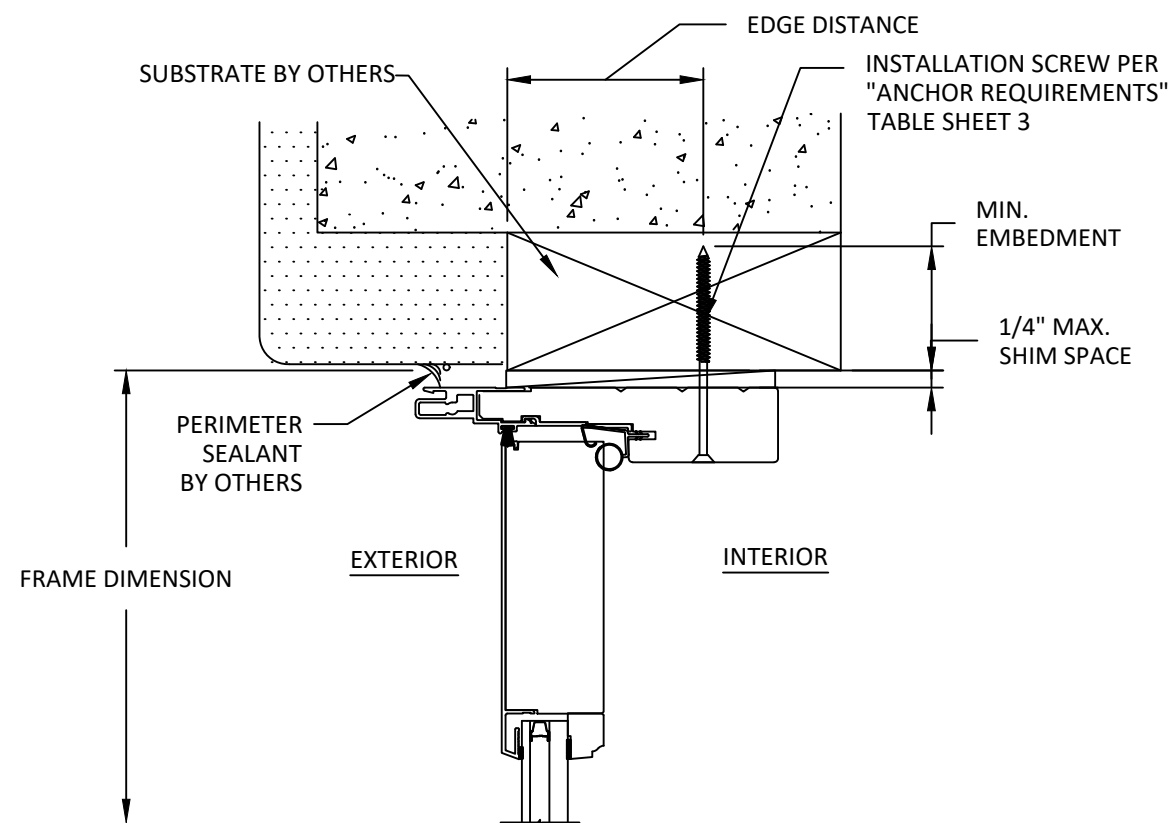
1

OF 9

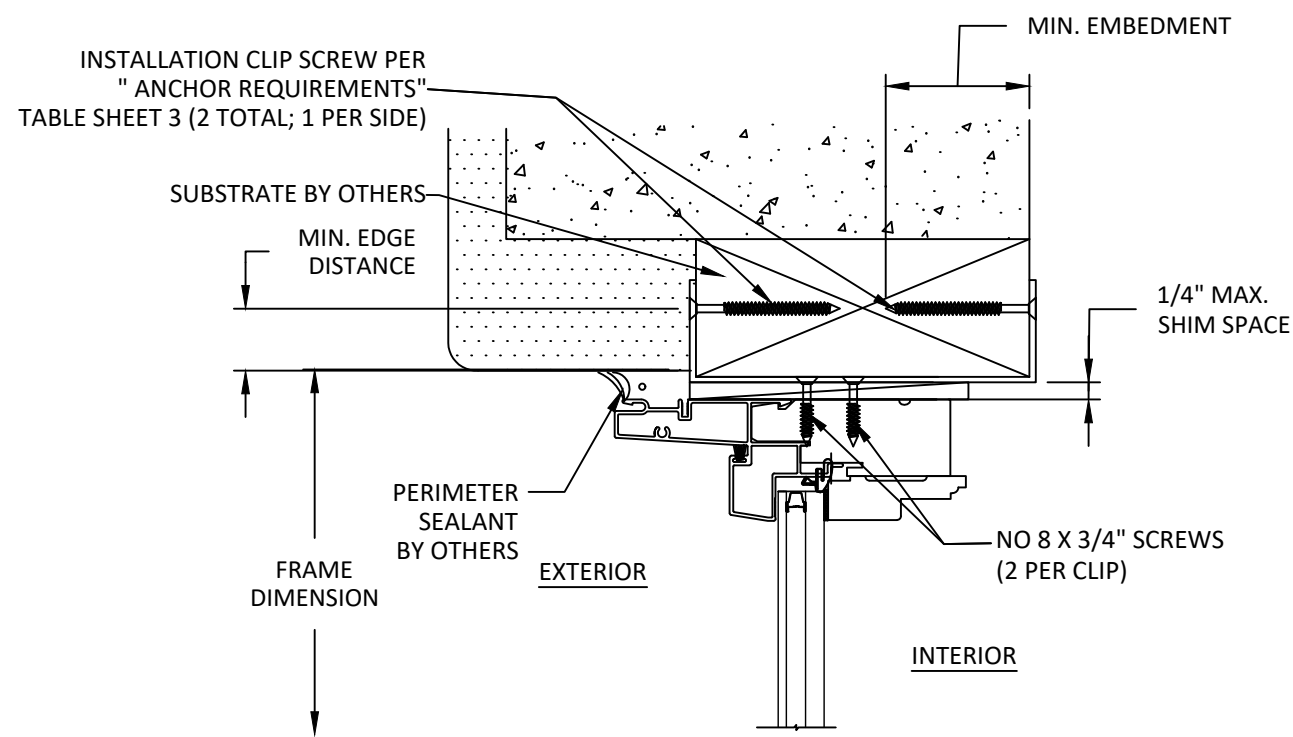
12/20/2020 6:46 PM
s:\projects\windsor windows and doors\lbc-20-0521 - fbc submittal - add steel mulls to w23 mull charts to f21095.dwg\wwd055.dwg



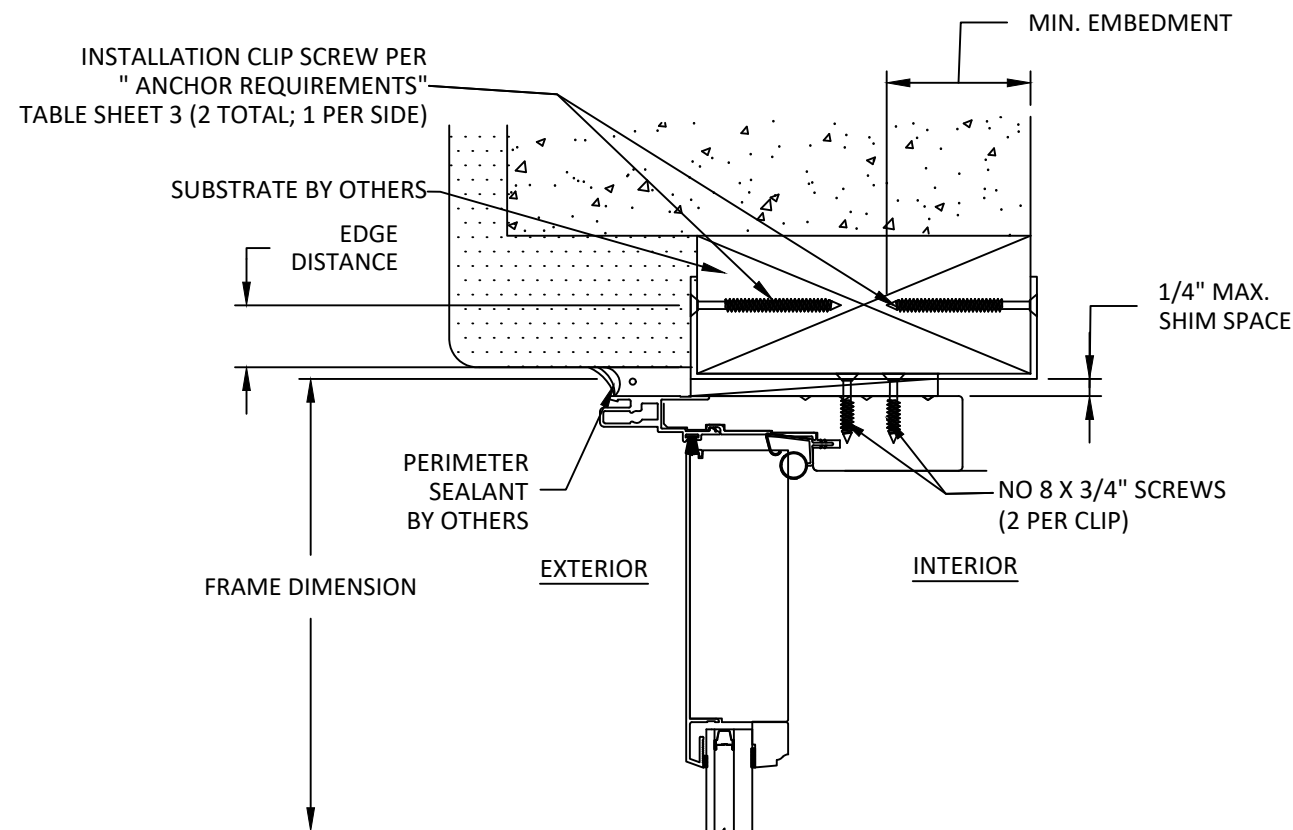
A
2
HEAD SECTION
THROUGH FRAME INSTALLATION
(SILL & SIDES ARE INSTALLED THE SAME)



C
2
HEAD SECTION
THROUGH FRAME INSTALLATION
(SILL & JAMB SIMILAR-WHERE APPLICABLE)



B
2
HEAD SECTION
STRAP INSTALLATION
(SILL & JAMB SIMILAR)



D
2
HEAD SECTION
STRAP INSTALLATION
(SILL & JAMB SIMILAR-WHERE APPLICABLE)



**WINDSOR WINDOWS
& DOORS**

900 S. 19TH STREET.
WEST DES MOINES, IA 50265
PH: (515)223-6660 FAX: (515)224-1938

PINNACLE CLAD
STEEL MULLION
(WZ3)(IMPACT)
VERTICAL SECTIONS

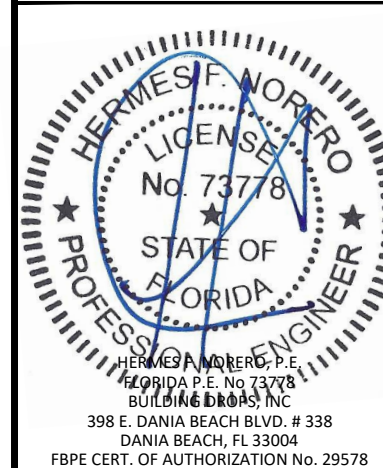
TITLE:

PREPARED BY:
BUILDING DROPS, INC.
398 E. DANIA BEACH BLVD., STE. 338
DANIA BEACH, FL 33004
PH: (954)399-8478
FAX: (954)744-4738
WEB: www.buildingdrops.com



REMARKS	BY	DATE

THE INSTALLATION DETAILS DESCRIBED HEREIN ARE GENERIC
AND MAY NOT REFLECT ACTUAL CONDITIONS FOR A SPECIFIC
SITE. IF SITE CONDITIONS CAUSE INSTALLATION TO DEVIATE
FROM THE REQUIREMENTS DETAILED HEREIN, A LICENSED
ENGINEER OR ARCHITECT SHALL PREPARE SITE SPECIFIC
DOCUMENTS FOR USE WITH THIS DOCUMENT.



FL #:
FL21905

DATE: **06.12.20**

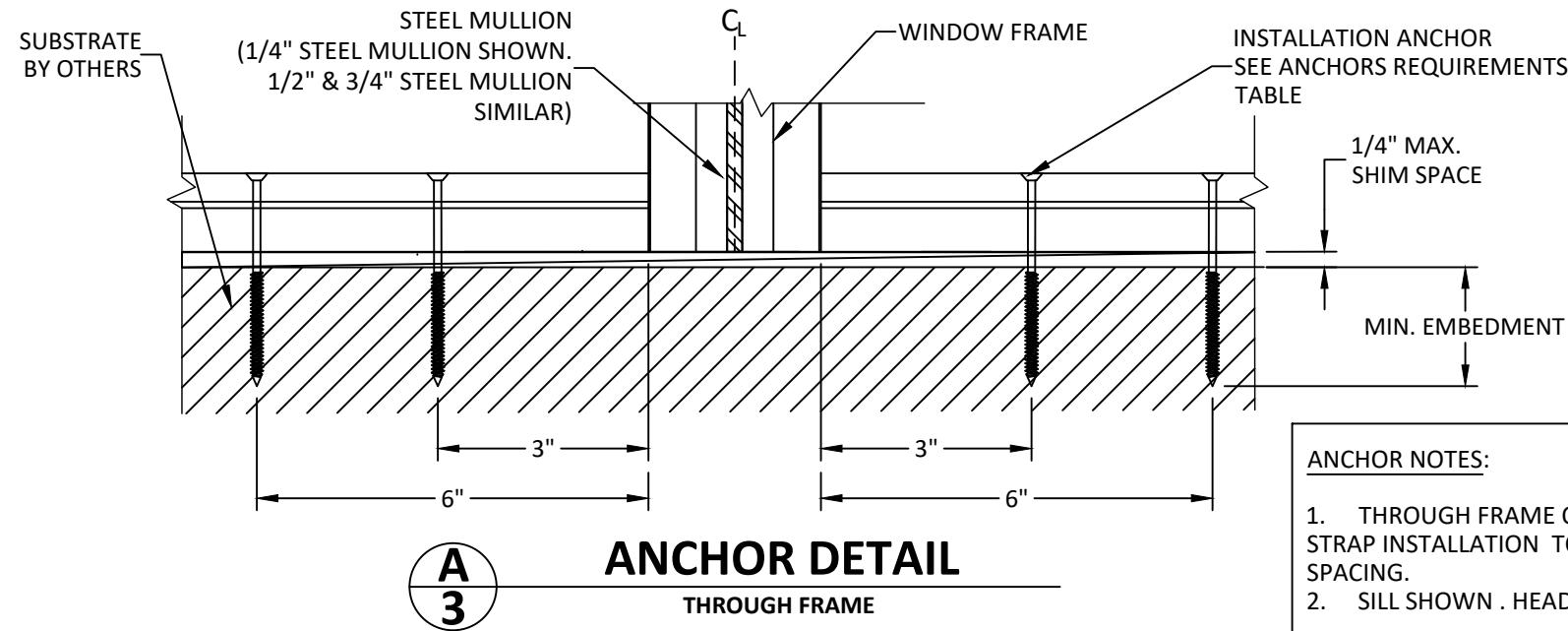
DWG. BY: **YC** CHK. BY: **HFN**

SCALE: **NTS**

DWG. #: **WWD055**

SHEET:
2

s:\projects\windsor windows and doors\lbc-20-0521 - fbc submittal - add steel mulls to w23 mull charts to f121095\dwgs\wwd055.dwg 12/20/2020 6:46 PM




- ANCHOR NOTES:**
1. THROUGH FRAME OPTION SHOWN. STRAP INSTALLATION TO FOLLOW SAME LAYOUT AND SPACING.
 2. SILL SHOWN . HEAD AND JAMBS SIMILAR

ANCHOR REQUIREMENTS			
ANCHOR SCHEDULE	SUBSTRATE	MIN EMBEDMENT	MIN. EDGE DISTANCE
#10 WOOD	WOOD: MIN. SG=0.55	1 1/4"	3/4"
#10 SELF-TAPPING OR SELF DRILLING SCREW	METAL: MIN. 18GAUGE STEEL , FY=33KSI	3 THREADS MIN. OF PENETRATION BEYOND METAL	1/2"
	METAL: MIN. 1/8" THICK ALUMINUM. 6063-T5 MIN.		
1/4" ELCO ULTRACON	CONCRETE: MIN. F'c=3000 PSI	1 1/4"	2.50"
1/4" ELCO ULTRACON	MASONRY: CMU PER ASTM C-90 MIN. 2000 PSI	1.00"	4.00"

MULLION NOTES:

1. WINDOW UNIT SHOWN ON THIS SHEET IS TYPICAL AND SHALL BE USED FOR DIAGRAMMATIC PURPOSES ONLY. ALL WINDOW AND DOOR PRODUCTS TO BE MULLED TO MULLION SHALL BE UNDER SEPARATE FL APPROVAL.
2. MULLION SHOWN HEREIN MAY BE USED WITH APPROVED WINDOW OR DOOR PRODUCTS WHICH ARE COMPATIBLE WITH MULLION (E.G. WINDSOR WINDOWS PINNACLE CLAD SERIES PRODUCTS)
3. INSTALLATION SHALL FOLLOW MANUFACTURER'S RECOMMENDATIONS FOR SEALING & ASSEMBLY. SHOULD MANUFACTURER'S INSTALLATION INSTRUCTION AND THOSE SHOWN HEREIN DEVIATE, THE DRAWINGS HEREIN SHALL GOVERN.
4. TWO ANCHORS CLUSTERED TO EACH SIDE OF MULLION, SPACED 3" & 6" AWAY FROM MULLION AT BOTH ENDS.



WINDSOR WINDOWS & DOORS
A Woodgrain Millwork Company

WINDSOR WINDOWS & DOORS
900 S. 19TH STREET.
WEST DES MOINES, IA 50265
PH: (515)223-6660 FAX: (515)224-1938

TITLE:

PINNACLE CLAD
STEEL MULLION
(WZ3)(IMPACT)


**MULLION NOTES, ANCHOR
REQUIREMENTS AND LAYOUTS**

PREPARED BY:

BUILDING DROPS, INC.
398 E. DANIA BEACH BLVD., STE. 338
DANIA BEACH, FL 33004
PH: (954)399-8478
FAX: (954)744-4738
WEB: www.buildingdrops.com

REMARKS	BY	DATE

THE INSTALLATION DETAILS DESCRIBED HEREIN ARE GENERIC AND MAY NOT REFLECT ACTUAL CONDITIONS FOR A SPECIFIC SITE. IF SITE CONDITIONS CAUSE INSTALLATION TO DEVIATE FROM THE REQUIREMENTS DETAILED HEREIN, A LICENSED ENGINEER OR ARCHITECT SHALL PREPARE SITE SPECIFIC DOCUMENTS FOR USE WITH THIS DOCUMENT.



HERMES F. MORERO, P.E.
FLORIDA P.E. No. 73778
BUILDING DROPS, INC.
398 E. DANIA BEACH BLVD. # 338
DANIA BEACH, FL 33004
FBPE CERT. OF AUTHORIZATION No. 29578

FL #:

FL21905

DATE: **06.12.20**

DWG. BY: YC	CHK. BY: HFN
-----------------------	------------------------

SCALE: **NTS**

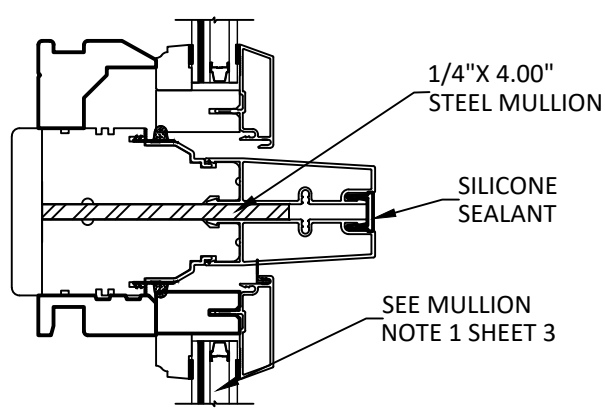
DWG. #: **WWD055**

SHEET:

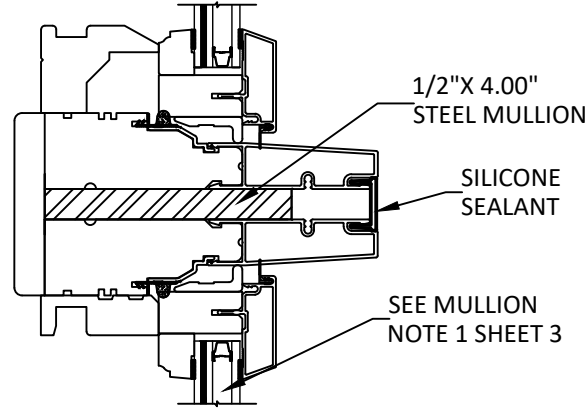
3

OF 9

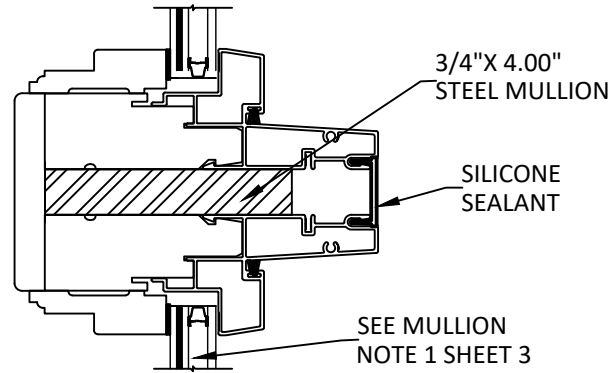
s:\projects\windsor windows and doors\lbc-20-0521 - fbc submittal - add steel mulls to w23 mull charts to f121095\dwgs\wwd055.dwg 12/20/2020 6:46 PM



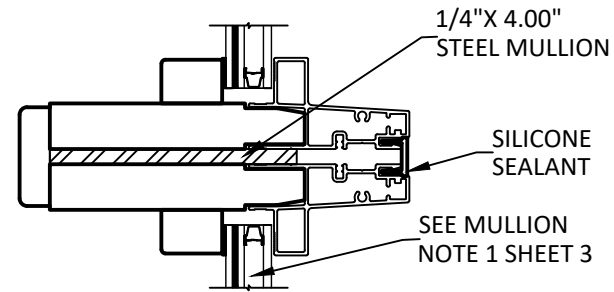
A
4 **DUAL CASEMENT OP**
HORIZONTAL MULLION



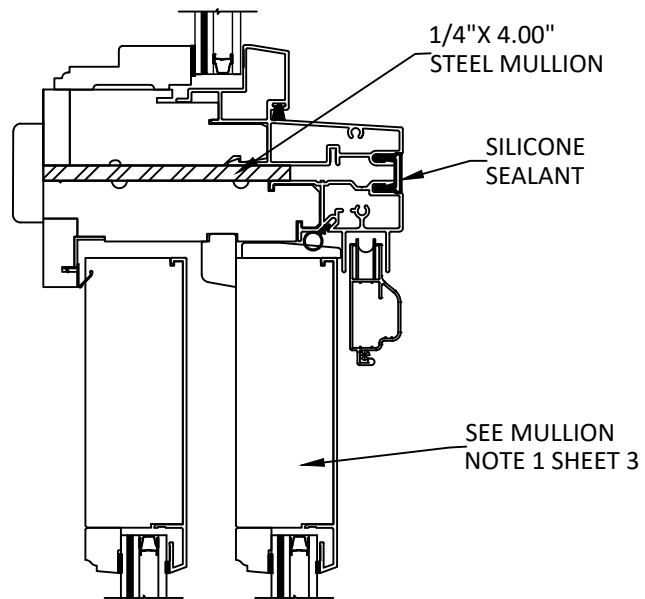
B
4 **DUAL CASEMENT PIC**
HORIZONTAL MULLION



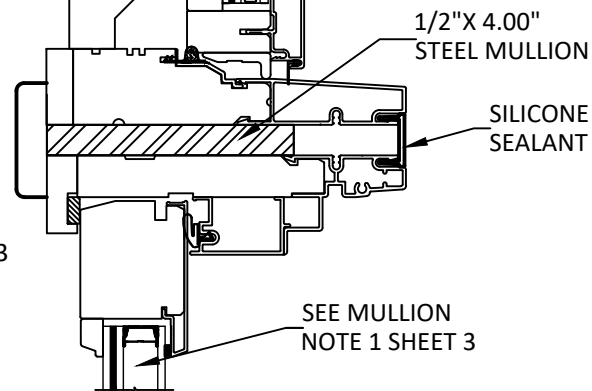
C
4 **DUAL DIRECT SET**
HORIZONTAL MULLION



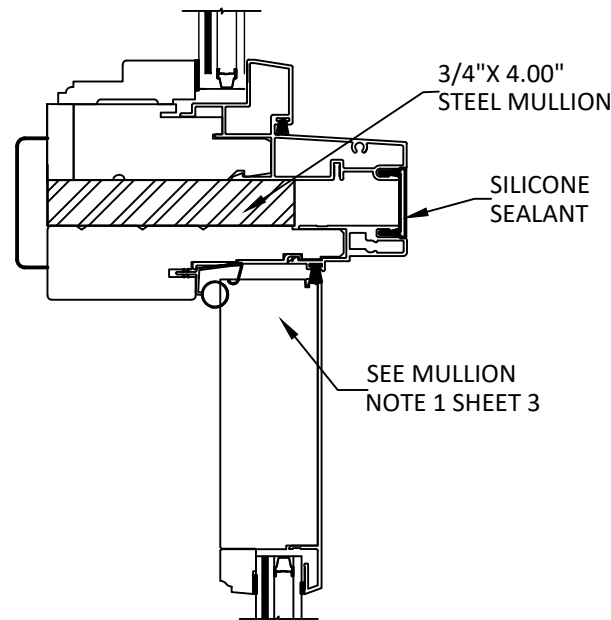
D
4 **DUAL RADIUS**
HORIZONTAL MULLION



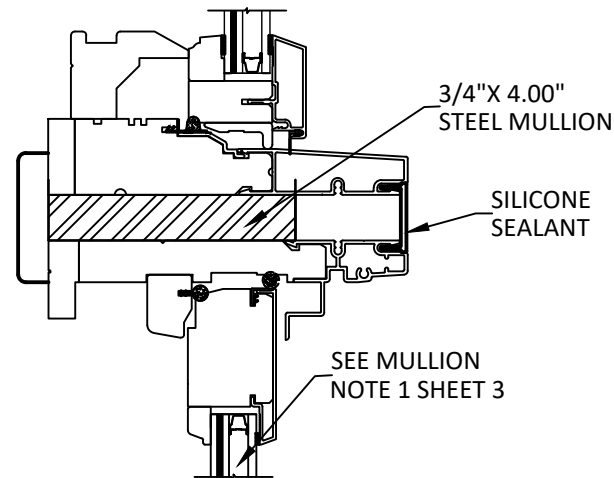
E
4 **SLIDING - DIRECT SET**
HORIZONTAL MULLION



F
4 **DH PIC - CASEMENT OP**
HORIZONTAL MULLION



G
4 **OUTSWING-CASEMENT OP**
HORIZONTAL MULLION



H
4 **DH OP - CASEMENT OP**
HORIZONTAL MULLION



**WINDSOR WINDOWS
& DOORS**
900 S. 19TH STREET.
WEST DES MOINES, IA 50265
PH: (515)223-6660 FAX: (515)224-1938

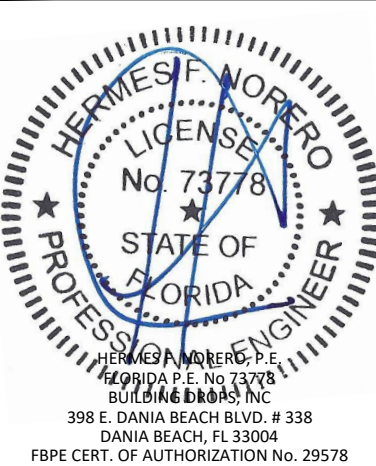
TITLE:
PINNACLE CLAD
STEEL MULLION
(W23)(IMPACT)
HORIZONTAL MULLION
SECTIONS

PREPARED BY:
BUILDING DROPS, INC.
398 E. DANIA BEACH BLVD., STE. 338
DANIA BEACH, FL 33004
PH: (954)395-8478
FAX: (954)744-4738
WEB: www.buildingdrops.com



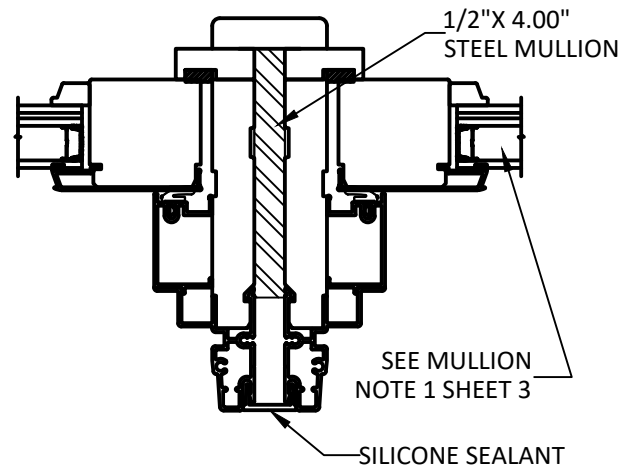
REMARKS	BY	DATE

THE INSTALLATION DETAILS DESCRIBED HEREIN ARE GENERIC
AND MAY NOT REFLECT ACTUAL CONDITIONS FOR A SPECIFIC
SITE. IF SITE CONDITIONS CAUSE INSTALLATION TO DEVIATE
FROM THE REQUIREMENTS DETAILED HEREIN, A LICENSED
ENGINEER OR ARCHITECT SHALL PREPARE SITE SPECIFIC
DOCUMENTS FOR USE WITH THIS DOCUMENT.

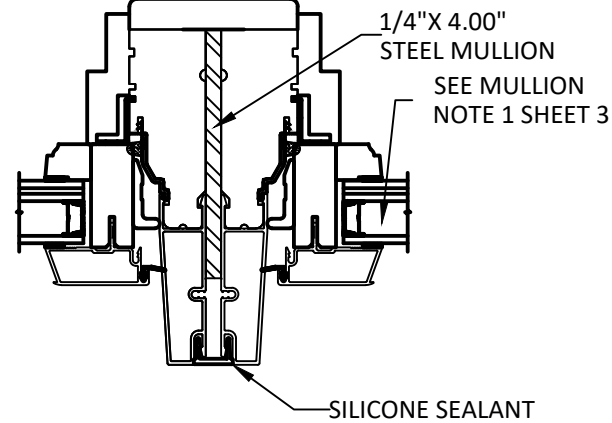


FL #:	FL21905
DATE:	06.12.20
DWG. BY:	YC
CHK. BY:	HFN
SCALE:	NTS
DWG. #:	WWD055
SHEET:	4

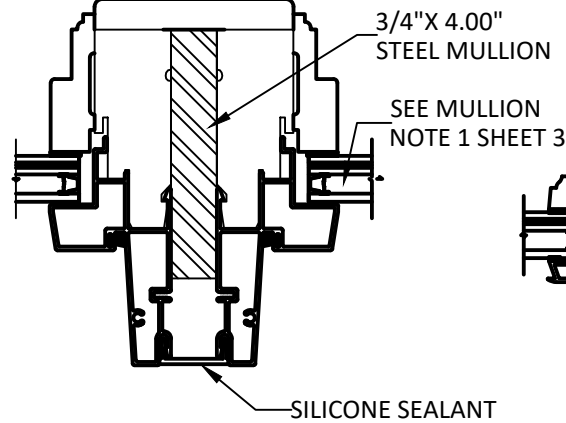
s:\projects\windsor windows and doors\lbc-20-0521 - fbc submittal - add steel mullis to w23 mull charts to f21095\dwgs\wwd055.dwg 12/20/2020 6:46 PM



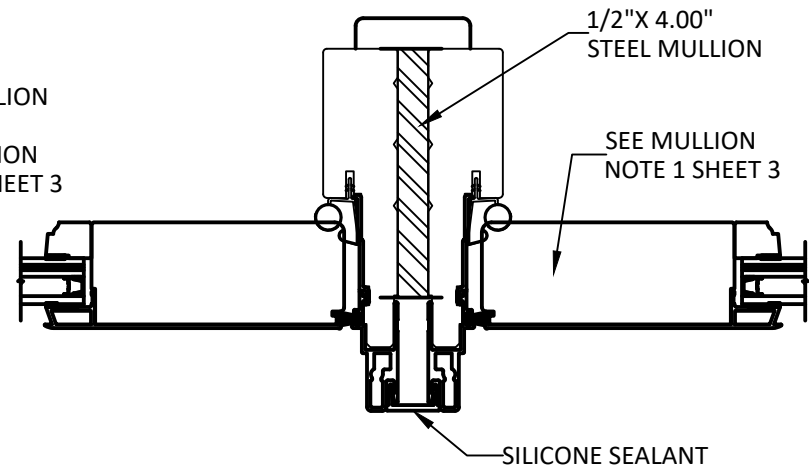
A
5 **DUAL DOUBLE HUNG PIC.**
VERTICAL MULLION



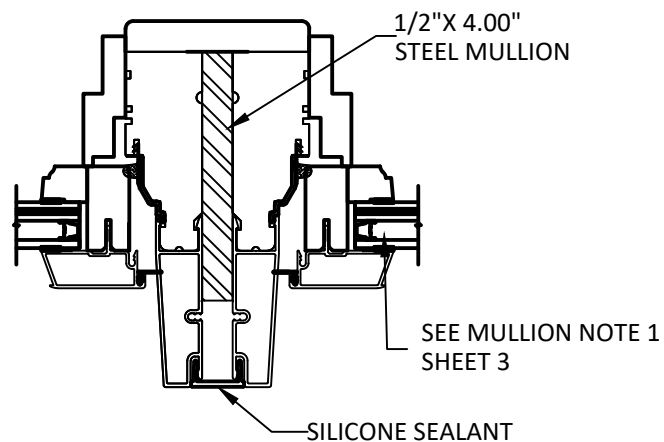
B
5 **DUAL CASEMENT PICTURE**
VERTICAL MULLION



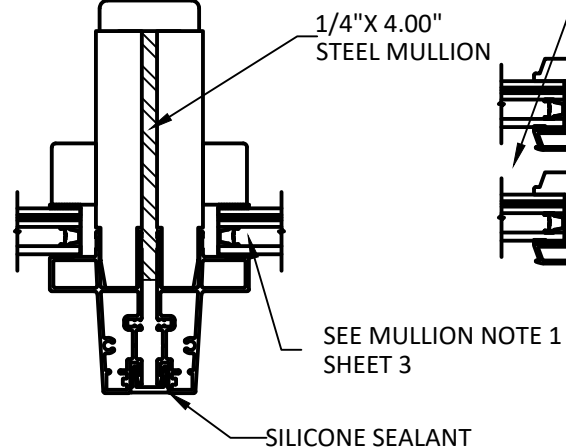
C
5 **DUAL DIRECT SET**
VERTICAL MULLION



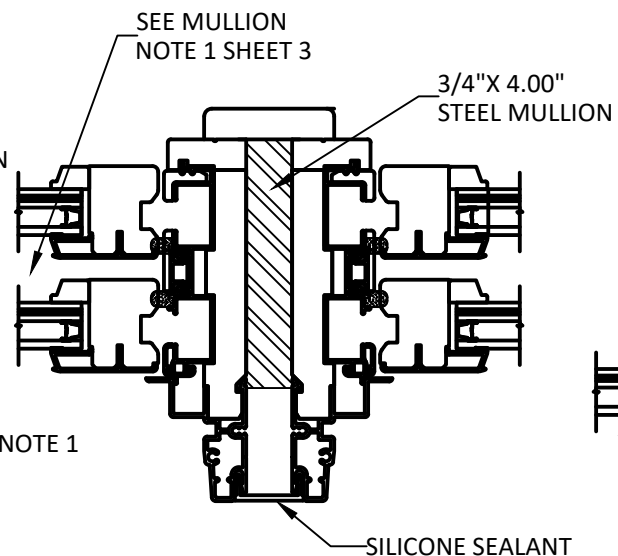
D
5 **DUAL OUTSWING PATIO**
VERTICAL MULLION



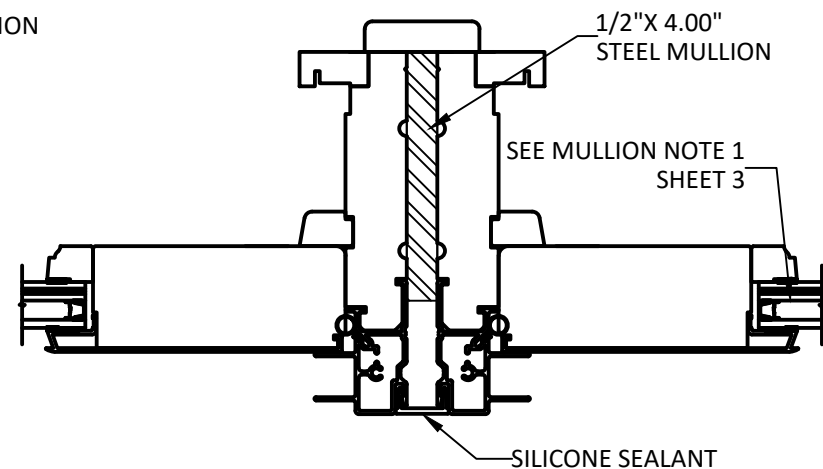
E
5 **DUAL CASEMENT OP.**
VERTICAL MULLION



F
5 **DUAL RADIUS**
VERTICAL MULLION



G
5 **DUAL DOUBLE HUNG OP.**
VERTICAL MULLION



H
5 **DUAL SLIDING PATIO**
VERTICAL MULLION



**WINDSOR WINDOWS
& DOORS**
900 S. 19TH STREET.
WEST DES MOINES, IA 50265
PH: (515)223-6660 FAX: (515)224-1938

PINNACLE CLAD
STEEL MULLION
(WZ3)(IMPACT)
VERTICAL MULLION
SECTIONS

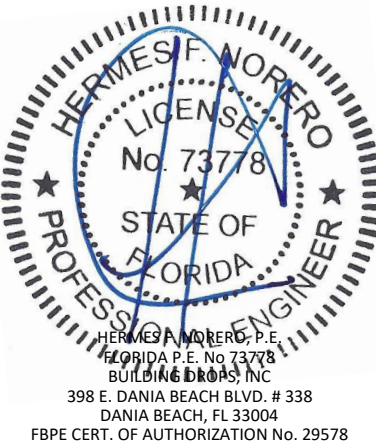
TITLE:

PREPARED BY:
BUILDING DROPS, INC.
398 E. DANIA BEACH BLVD., STE. 338
DANIA BEACH, FL 33004
PH: (954)399-8478
FAX: (954)744-4738
WEB: www.buildingdrops.com



REMARKS	BY	DATE

THE INSTALLATION DETAILS DESCRIBED HEREIN ARE GENERIC
AND MAY NOT REFLECT ACTUAL CONDITIONS FOR A SPECIFIC
SITE. IF SITE CONDITIONS CAUSE INSTALLATION TO DEVIATE
FROM THE REQUIREMENTS DETAILED HEREIN, A LICENSED
ENGINEER OR ARCHITECT SHALL PREPARE SITE SPECIFIC
DOCUMENTS FOR USE WITH THIS DOCUMENT.



FL #:	FL21905
DATE:	06.12.20
DWG. BY:	YC
CHK. BY:	HFN
SCALE:	NTS
DWG. #:	WWD055
SHEET:	5

s:\projects\windsor windows and doors\lbc-20-0521 - fbc submittal - add steel mullins to wz3 mull charts to f210951.dwg\wwd055.dwg 12/20/2020 6:46 PM

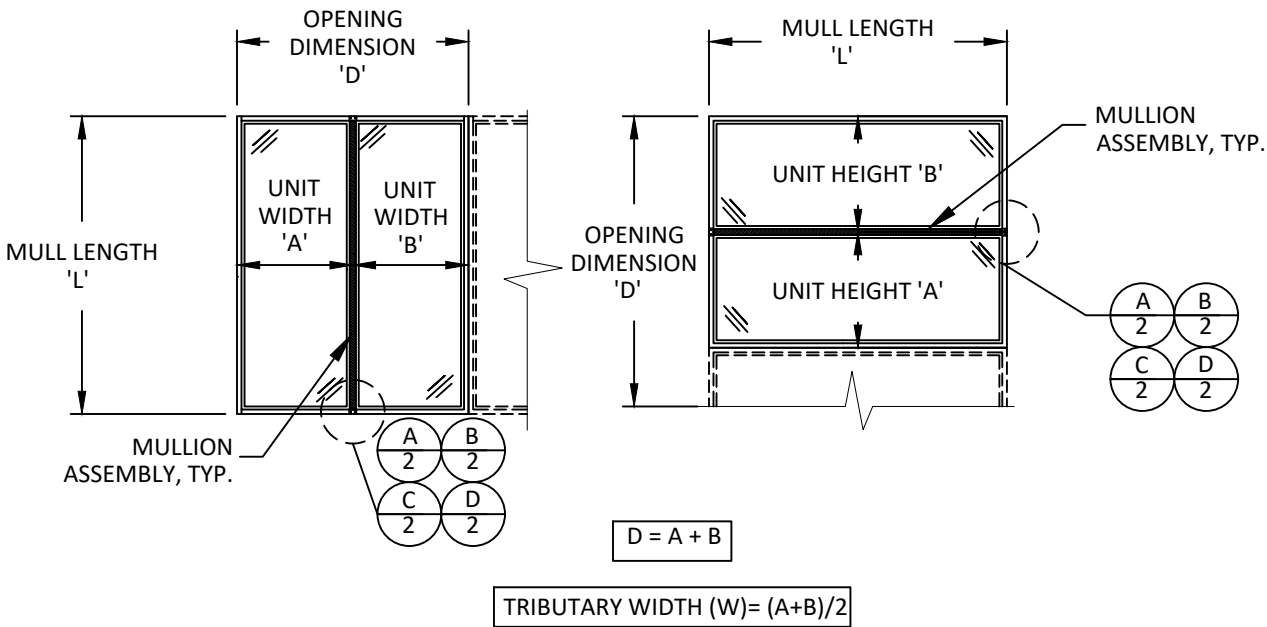
1/4" STEEL MULLION - THROUGH FRAME & STRAP INSTALLATION

ONE WAY-MAXIMUM DESIGN PRESSURE CAPACITY (PSF): 1/4" STEEL MULLION														
L-MULLION LENGTH (IN)	W- TRIBUTARY WIDTH (IN)													
	24.0	30.0	36.0	42.0	48.0	54.0	60.0	66.0	72.0	78.0	84.0	90.0	96.0	
36.0	150.0	150.0	150.0	150.0	150.0	150.0	150.0	150.0	150.0	150.0	150.0	150.0	150.0	
48.0	150.0	150.0	142.7	135.9	133.8	133.8	133.8	133.8	133.8	133.8	133.8	133.8	133.8	
60.0	133.8	114.1	101.9	94.1	89.2	86.5	85.6	85.6	85.6	85.6	85.6	85.6	85.6	
72.0	107.0	90.1	79.3	71.9	66.9	63.4	61.1	59.9	59.4	59.4	59.4	59.4	59.4	
84.0	89.2	74.4	64.9	58.2	53.5	50.1	47.6	45.8	44.6	43.9	43.7	43.7	43.7	
96.0	76.4	63.4	54.9	48.9	44.6	41.4	38.9	37.1	35.7	34.7	34.0	33.6	33.4	
108.0	66.9	55.2	47.6	42.2	38.2	35.2	32.9	31.1	29.7	28.6	27.8	27.2	26.8	
120.0	59.4	48.9	42.0	37.1	33.4	30.7	28.5	26.8	25.5	24.4	23.5	22.8	22.3	
132.0	53.5	43.9	37.5	33.1	29.7	27.2	25.2	23.6	22.3	21.2	20.4	19.7	19.1	
144.0	48.6	39.8	34.0	29.8	26.8	24.4	22.5	21.0	19.8	18.8	18.0	17.3	16.6	
156.0	43.7	35.1	29.5	25.5	22.5	20.2	18.4	16.9	15.8	-	-	-	-	
168.0	34.9	28.1	23.5	20.3	17.9	16.1	-	-	-	-	-	-	-	
180.0	28.4	22.8	19.1	16.5	-	-	-	-	-	-	-	-	-	
192.0	23.3	18.7	15.7	-	-	-	-	-	-	-	-	-	-	
204.0	19.5	15.6	-	-	-	-	-	-	-	-	-	-	-	
216.0	16.4	-	-	-	-	-	-	-	-	-	-	-	-	
228.0	-	-	-	-	-	-	-	-	-	-	-	-	-	
240.0	-	-	-	-	-	-	-	-	-	-	-	-	-	

TWO WAY-MAXIMUM DESIGN PRESSURE CAPACITY (PSF): 1/4" STEEL MULLION														
L-MULLION LENGTH (IN)	W- TRIBUTARY WIDTH (IN)													
	24.0	30.0	36.0	42.0	48.0	54.0	60.0	66.0	72.0	78.0	84.0	90.0	96.0	
36.0	150.0	142.7	118.9	101.9	89.2	79.3	71.3	64.9	59.4	54.9	51.0	47.6	44.6	
48.0	133.8	107.0	89.2	76.4	66.9	59.4	53.5	48.6	44.6	41.2	38.2	35.7	33.4	
60.0	107.0	85.6	71.3	61.1	53.5	47.6	42.8	38.9	35.7	32.9	30.6	28.5	26.8	
72.0	89.2	71.3	59.4	51.0	44.6	39.6	35.7	32.4	29.7	27.4	25.5	23.8	22.3	
84.0	76.4	61.1	51.0	43.7	38.2	34.0	30.6	27.8	25.5	23.5	21.8	20.4	19.1	
96.0	66.9	53.5	44.6	38.2	33.4	29.7	26.8	24.3	22.3	20.6	19.1	17.8	16.7	
108.0	59.4	47.6	39.6	34.0	29.7	26.4	23.8	21.6	19.8	18.3	17.0	15.9	-	
120.0	53.5	42.8	35.7	30.6	26.8	23.8	21.4	19.5	17.8	16.5	15.3	-	-	
132.0	48.6	38.9	32.4	27.8	24.3	21.6	19.5	17.7	16.2	-	-	-	-	
144.0	44.6	35.7	29.7	25.5	22.3	19.8	17.8	16.2	-	-	-	-	-	
156.0	41.2	32.9	27.4	23.5	20.6	18.3	16.5	-	-	-	-	-	-	
168.0	34.9	28.0	23.3	20.0	17.5	15.5	-	-	-	-	-	-	-	
180.0	28.4	22.7	18.9	16.2	-	-	-	-	-	-	-	-	-	
192.0	23.4	18.7	15.6	-	-	-	-	-	-	-	-	-	-	
204.0	19.5	15.6	-	-	-	-	-	-	-	-	-	-	-	
216.0	16.4	-	-	-	-	-	-	-	-	-	-	-	-	
228.0	-	-	-	-	-	-	-	-	-	-	-	-	-	
240.0	-	-	-	-	-	-	-	-	-	-	-	-	-	

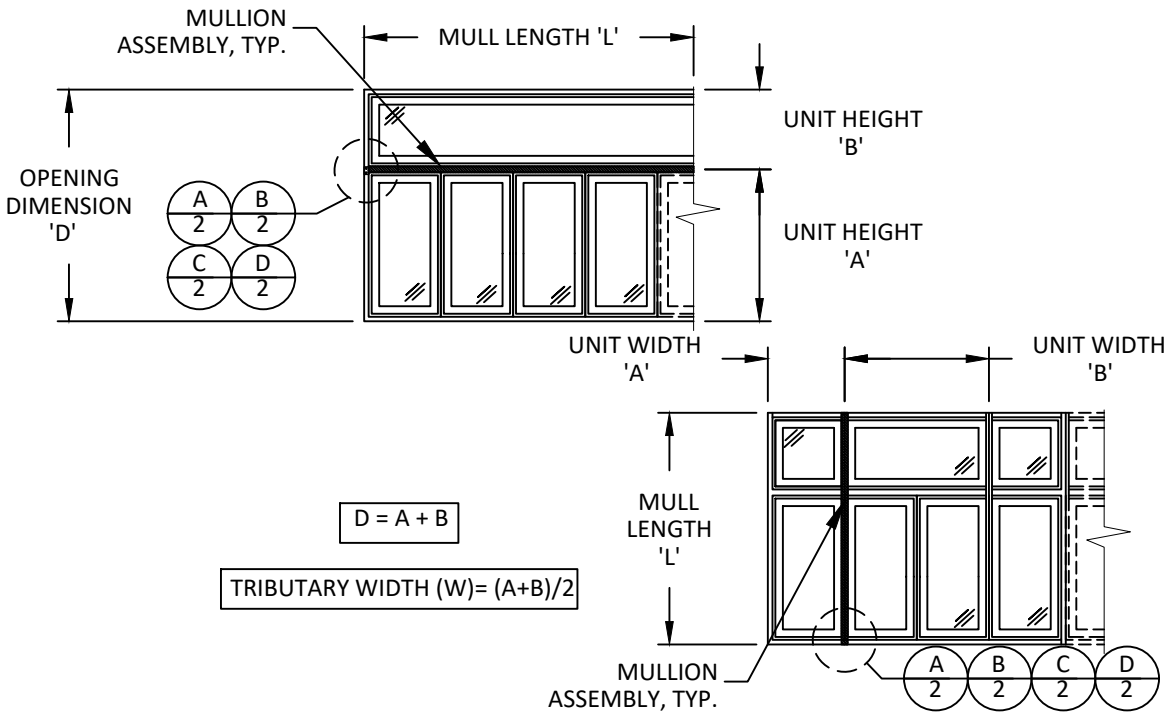
NOTES:

1. 'ONE-WAY' MULLIONS REFER TO EITHER VERTICAL SINGLE SPAN OR HORIZONTAL STACKED ASSEMBLIES SIMILAR TO THOSE DIAGRAMMED ON THIS SHEET.
2. THE POSITIVE AND NEGATIVE DESIGN PRESSURE CHARTS ARE APPLICABLE FOR INSTALLATION PROCEDURES ON SHEET 3.
3. WINDOW OR DOORS SHALL BE UNDER SEPARATE APPROVAL.
4. DESIGN PRESSURES SHALL BE GOVERNED BY THE LESSER OF THE MULLION ASSEMBLY (LISTED IN TABLE) OR INDIVIDUAL WINDOW OR DOOR UNIT UNDER SEPARATE APPROVAL.
5. MULLIONS MAY BE USED IN ASSEMBLIES UTILIZING MORE THAN TWO WINDOW OR DOOR UNITS AND CAN BE USED FOR UNLIMITED NUMBER OF PANELS.



NOTES:

1. 'TWO-WAY' MULLIONS REFER TO EITHER VERTICAL OR HORIZONTAL WITH INTERMEDIATE MEMBERS SIMILAR TO THOSE DIAGRAMMED ON THIS SHEET.
2. THE POSITIVE AND NEGATIVE DESIGN PRESSURE CHARTS ARE APPLICABLE FOR INSTALLATION PROCEDURES ON SHEET 3.
3. WINDOW OR DOORS SHALL BE UNDER SEPARATE APPROVAL.
4. DESIGN PRESSURES SHALL BE GOVERNED BY THE LESSER OF THE MULLION ASSEMBLY (LISTED IN TABLE) OR INDIVIDUAL WINDOW OR DOOR UNIT UNDER SEPARATE APPROVAL.
5. MULLIONS MAY BE USED IN ASSEMBLIES UTILIZING MORE THAN TWO WINDOW OR DOOR UNITS AND CAN BE USED FOR UNLIMITED NUMBER OF PANELS.



WINDSOR WINDOWS & DOORS

900 S. 19TH STREET.
WEST DES MOINES, IA 50265
PH: (515)223-6660 FAX: (515)224-1938

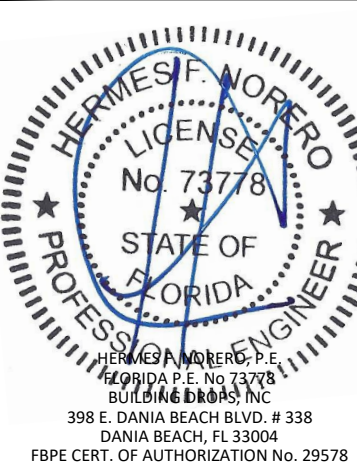
TITLE: PINNACLE CLAD STEEL MULLION (WZ3)(IMPACT) DESIGN PRESSURE TABLE 1/4" STEEL MULLION

PREPARED BY: BUILDING DROPS, INC.
398 E. DANIA BEACH BLVD., STE. 338
DANIA BEACH, FL 33004
PH: (954)395-8478
FAX: (954)744-4738
WEB: www.buildingdrops.com



REMARKS BY DATE

THE INSTALLATION DETAILS DESCRIBED HEREIN ARE GENERIC AND MAY NOT REFLECT ACTUAL CONDITIONS FOR A SPECIFIC SITE. IF SITE CONDITIONS CAUSE INSTALLATION TO DEVIATE FROM THE REQUIREMENTS DETAILED HEREIN, A LICENSED ENGINEER OR ARCHITECT SHALL PREPARE SITE SPECIFIC DOCUMENTS FOR USE WITH THIS DOCUMENT.



FL #: FL21905

DATE: 06.12.20

DWG. BY: YC CHK. BY: HFN

SCALE: NTS

DWG. #: WWD055

SHEET: 6

s:\projects\windsor windows and doors\lbc-20-0521 - fbc submittal - add steel mullins to w23 mull charts to f210951.dwg\wwd055.dwg 12/20/2020 6:46 PM

1/2" STEEL MULLION - THROUGH FRAME & STRAP INSTALLATION

ONE WAY-MAXIMUM DESIGN PRESSURE CAPACITY CHART (PSF) 1/2" STEEL MULLION													
L-MULLION LENGTH (IN)	W - TRIBUTARY WIDTH (IN)												
	24.0	30.0	36.0	42.0	48.0	54.0	60.0	66.0	72.0	78.0	84.0	90.0	96.0
36.0	150.0	150.0	150.0	150.0	150.0	150.0	150.0	150.0	150.0	150.0	150.0	150.0	150.0
48.0	150.0	150.0	142.7	135.9	133.8	133.8	133.8	133.8	133.8	133.8	133.8	133.8	133.8
60.0	133.8	114.1	101.9	94.1	89.2	86.5	85.6	85.6	85.6	85.6	85.6	85.6	85.6
72.0	107.0	90.1	79.3	71.9	66.9	63.4	61.1	59.9	59.4	59.4	59.4	59.4	59.4
84.0	89.2	74.4	64.9	58.2	53.5	50.1	47.6	45.8	44.6	43.9	43.7	43.7	43.7
96.0	76.4	63.4	54.9	48.9	44.6	41.4	38.9	37.1	35.7	34.7	34.0	33.6	33.4
108.0	66.9	55.2	47.6	42.2	38.2	35.2	32.9	31.1	29.7	28.6	27.8	27.2	26.8
120.0	59.4	48.9	42.0	37.1	33.4	30.7	28.5	26.8	25.5	24.4	23.5	22.8	22.3
132.0	53.5	43.9	37.5	33.1	29.7	27.2	25.2	23.6	22.3	21.2	20.4	19.7	19.1
144.0	48.6	39.8	34.0	29.8	26.8	24.4	22.5	21.0	19.8	18.8	18.0	17.3	16.7
156.0	44.6	36.4	31.0	27.2	24.3	22.1	20.4	19.0	17.8	16.9	16.1	15.4	-
168.0	41.2	33.6	28.5	25.0	22.3	20.2	18.6	17.3	16.2	15.3	-	-	-
180.0	38.2	31.1	26.4	23.1	20.6	18.7	17.1	15.9	-	-	-	-	-
192.0	35.7	29.0	24.6	21.5	19.1	17.3	15.9	-	-	-	-	-	-
204.0	32.1	25.7	21.5	18.5	16.3	-	-	-	-	-	-	-	-
216.0	27.0	21.7	18.1	15.6	-	-	-	-	-	-	-	-	-
228.0	22.9	18.4	15.4	-	-	-	-	-	-	-	-	-	-
240.0	19.7	15.8	-	-	-	-	-	-	-	-	-	-	-

NOTES:

1.

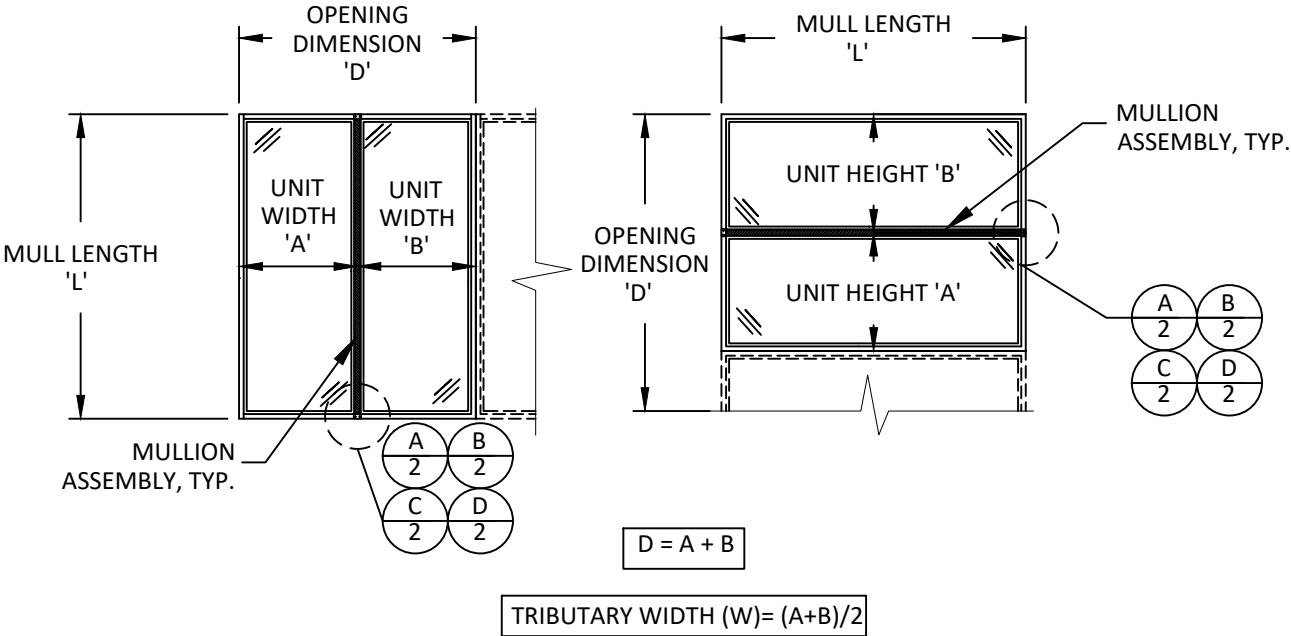
'ONE-WAY' MULLIONS REFER TO EITHER VERTICAL SINGLE SPAN OR HORIZONTAL STACKED ASSEMBLIES SIMILAR TO THOSE DIAGRAMMED ON THIS SHEET.
2.

THE POSITIVE AND NEGATIVE DESIGN PRESSURE CHARTS ARE APPLICABLE FOR INSTALLATION PROCEDURES ON SHEET 3.
3.

WINDOW OR DOORS SHALL BE UNDER SEPARATE APPROVAL.
4.

DESIGN PRESSURES SHALL BE GOVERNED BY THE LESSER OF THE MULLION ASSEMBLY (LISTED IN TABLE) OR INDIVIDUAL WINDOW OR DOOR UNIT UNDER SEPARATE APPROVAL.
5.

MULLIONS MAY BE USED IN ASSEMBLIES UTILIZING MORE THAN TWO WINDOW OR DOOR UNITS AND CAN BE USED FOR UNLIMITED NUMBER OF PANELS.



TWO WAY-MAXIMUM DESIGN PRESSURE CAPACITY (PSF) 1/2" STEEL MULLION													
L-MULLION LENGTH (IN)	W - TRIBUTARY WIDTH (IN)												
	24.0	30.0	36.0	42.0	48.0	54.0	60.0	66.0	72.0	78.0	84.0	90.0	96.0
36.0	150.0	142.7	118.9	101.9	89.2	79.3	71.3	64.9	59.4	54.9	51.0	47.6	44.6
48.0	133.8	107.0	89.2	76.4	66.9	59.4	53.5	48.6	44.6	41.2	38.2	35.7	33.4
60.0	107.0	85.6	71.3	61.1	53.5	47.6	42.8	38.9	35.7	32.9	30.6	28.5	26.8
72.0	89.2	71.3	59.4	51.0	44.6	39.6	35.7	32.4	29.7	27.4	25.5	23.8	22.3
84.0	76.4	61.1	51.0	43.7	38.2	34.0	30.6	27.8	25.5	23.5	21.8	20.4	19.1
96.0	66.9	53.5	44.6	38.2	33.4	29.7	26.8	24.3	22.3	20.6	19.1	17.8	16.7
108.0	59.4	47.6	39.6	34.0	29.7	26.4	23.8	21.6	19.8	18.3	17.0	15.9	-
120.0	53.5	42.8	35.7	30.6	26.8	23.8	21.4	19.5	17.8	16.5	15.3	-	-
132.0	48.6	38.9	32.4	27.8	24.3	21.6	19.5	17.7	16.2	-	-	-	-
144.0	44.6	35.7	29.7	25.5	22.3	19.8	17.8	16.2	-	-	-	-	-
156.0	41.2	32.9	27.4	23.5	20.6	18.3	16.5	-	-	-	-	-	-
168.0	38.2	30.6	25.5	21.8	19.1	17.0	15.3	-	-	-	-	-	-
180.0	35.7	28.5	23.8	20.4	17.8	15.9	-	-	-	-	-	-	-
192.0	33.4	26.8	22.3	19.1	16.7	-	-	-	-	-	-	-	-
204.0	31.5	25.2	21.0	18.0	15.7	-	-	-	-	-	-	-	-
216.0	27.1	21.7	18.1	15.5	-	-	-	-	-	-	-	-	-
228.0	23.0	18.4	15.4	-	-	-	-	-	-	-	-	-	-
240.0	19.8	15.8	-	-	-	-	-	-	-	-	-	-	-

NOTES:

1.

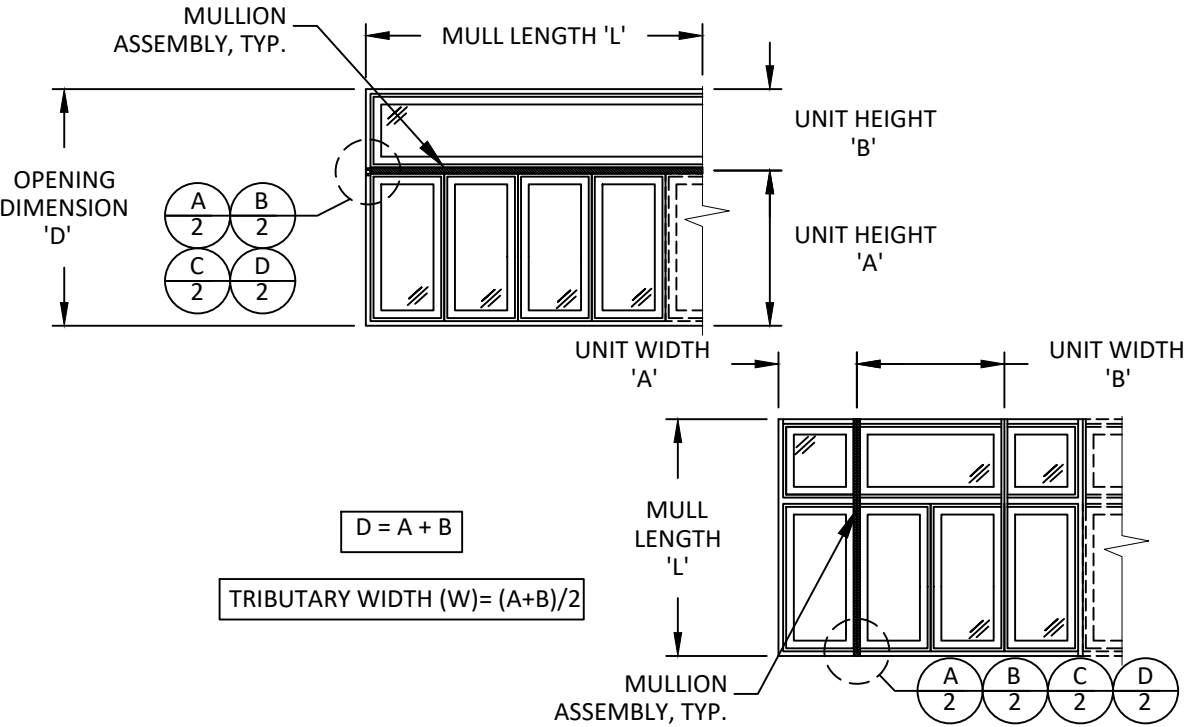
'TWO-WAY' MULLIONS REFER TO EITHER VERTICAL OR HORIZONTAL WITH INTERMEDIATE MEMBERS SIMILAR TO THOSE DIAGRAMMED ON THIS SHEET.
2.

THE POSITIVE AND NEGATIVE DESIGN PRESSURE CHARTS ARE APPLICABLE FOR INSTALLATION PROCEDURES ON SHEET 3.
3.

WINDOW OR DOORS SHALL BE UNDER SEPARATE APPROVAL.
4.

DESIGN PRESSURES SHALL BE GOVERNED BY THE LESSER OF THE MULLION ASSEMBLY (LISTED IN TABLE) OR INDIVIDUAL WINDOW OR DOOR UNIT UNDER SEPARATE APPROVAL.
5.

MULLIONS MAY BE USED IN ASSEMBLIES UTILIZING MORE THAN TWO WINDOW OR DOOR UNITS AND CAN BE USED FOR UNLIMITED NUMBER OF PANELS.



WINDSOR WINDOWS & DOORS

900 S. 19TH STREET.
WEST DES MOINES, IA 50265
PH: (515)223-6660 FAX: (515)224-1938

TITLE:

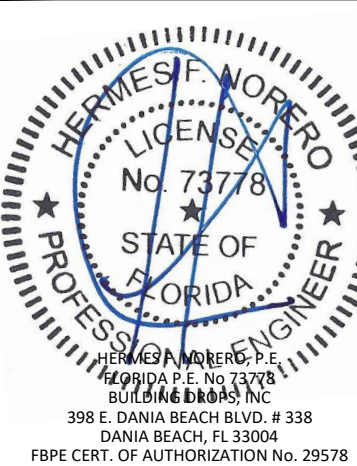
PINNACLE CLAD
STEEL MULLION
(WZ3)(IMPACT)
DESIGN PRESSURE TABLE
1/2" STEEL MULLION

PREPARED BY:

BUILDING DROPS, INC.
398 E. DANIA BEACH BLVD., STE. 338
DANIA BEACH, FL 33004
PH: (954)399-8478
FAX: (954)744-4738
WEB: www.buildingdrops.com

REMARKS	BY	DATE

THE INSTALLATION DETAILS DESCRIBED HEREIN ARE GENERIC AND MAY NOT REFLECT ACTUAL CONDITIONS FOR A SPECIFIC SITE. IF SITE CONDITIONS CAUSE INSTALLATION TO DEVIATE FROM THE REQUIREMENTS DETAILED HEREIN, A LICENSED ENGINEER OR ARCHITECT SHALL PREPARE SITE SPECIFIC DOCUMENTS FOR USE WITH THIS DOCUMENT.



FL #:

FL21905

DATE:

06.12.20

DWG. BY:

YC

CHK. BY:

HFN

SCALE:

NTS

DWG. #:

WWD055

SHEET:

7

OF 9

s:\projects\windsor windows and doors\lbc-20-0521 - fbc submittal - add steel mullis to w23 mull charts to f210951.dwg\wwd055.dwg 12/20/2020 6:46 PM

3/4" STEEL MULLION - THROUGH FRAME & STRAP INSTALLATION

L-MULLION LENGTH (IN)	ONE WAY-MAXIMUM DESIGN PRESSURE CAPACITY (PSF) 3/4" STEEL MULLION												
	W - TRIBUTARY WIDTH (IN)												
	24.0	30.0	36.0	42.0	48.0	54.0	60.0	66.0	72.0	78.0	84.0	90.0	96.0
36.0	150.0	150.0	150.0	150.0	150.0	150.0	150.0	150.0	150.0	150.0	150.0	150.0	150.0
48.0	150.0	150.0	142.7	135.9	133.8	133.8	133.8	133.8	133.8	133.8	133.8	133.8	133.8
60.0	133.8	114.1	101.9	94.1	89.2	86.5	85.6	85.6	85.6	85.6	85.6	85.6	85.6
72.0	107.0	90.1	79.3	71.9	66.9	63.4	61.1	59.9	59.4	59.4	59.4	59.4	59.4
84.0	89.2	74.4	64.9	58.2	53.5	50.1	47.6	45.8	44.6	43.9	43.7	43.7	43.7
96.0	76.4	63.4	54.9	48.9	44.6	41.4	38.9	37.1	35.7	34.7	34.0	33.6	33.4
108.0	66.9	55.2	47.6	42.2	38.2	35.2	32.9	31.1	29.7	28.6	27.8	27.2	26.8
120.0	59.4	48.9	42.0	37.1	33.4	30.7	28.5	26.8	25.5	24.4	23.5	22.8	22.3
132.0	53.5	43.9	37.5	33.1	29.7	27.2	25.2	23.6	22.3	21.2	20.4	19.7	19.1
144.0	48.6	39.8	34.0	29.8	26.8	24.4	22.5	21.0	19.8	18.8	18.0	17.3	16.7
156.0	44.6	36.4	31.0	27.2	24.3	22.1	20.4	19.0	17.8	16.9	16.1	15.4	-
168.0	41.2	33.6	28.5	25.0	22.3	20.2	18.6	17.3	16.2	15.3	-	-	-
180.0	38.2	31.1	26.4	23.1	20.6	18.7	17.1	15.9	-	-	-	-	-
192.0	35.7	29.0	24.6	21.5	19.1	17.3	15.9	-	-	-	-	-	-
204.0	33.4	27.2	23.0	20.0	17.8	16.1	-	-	-	-	-	-	-
216.0	31.5	25.6	21.6	18.8	16.7	15.1	-	-	-	-	-	-	-
228.0	29.7	24.1	20.4	17.7	15.7	-	-	-	-	-	-	-	-
240.0	27.4	22.0	18.4	15.8	-	-	-	-	-	-	-	-	-

NOTES:

1.

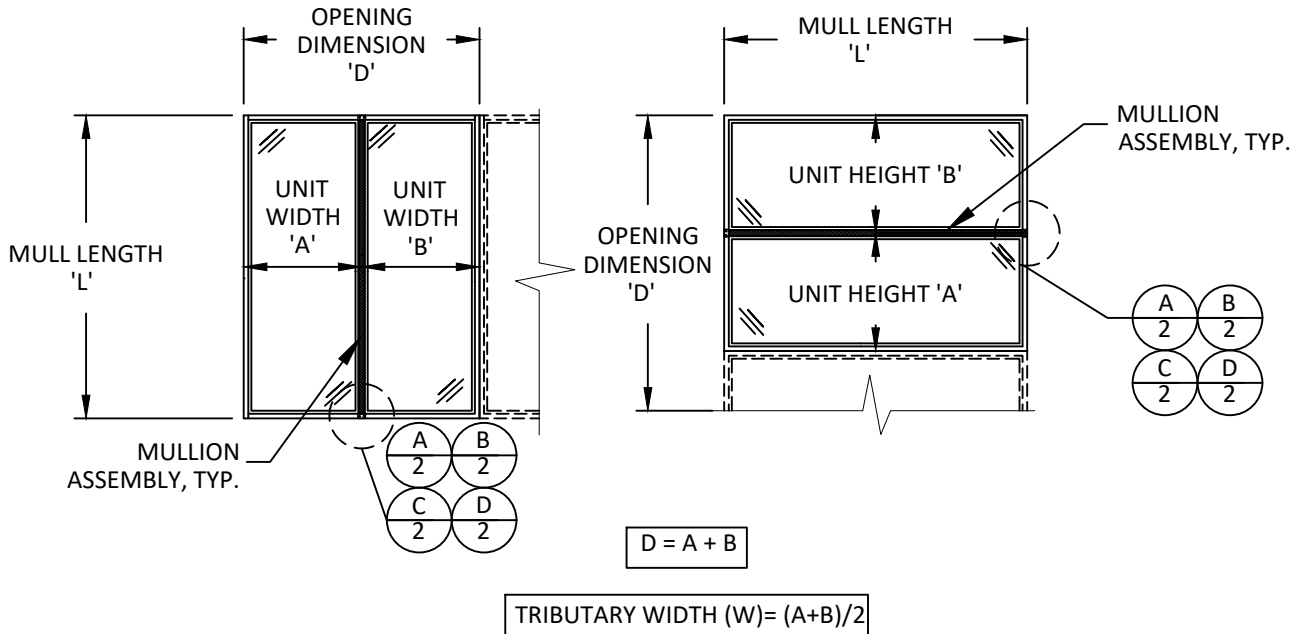
'ONE-WAY' MULLIONS REFER TO EITHER VERTICAL SINGLE SPAN OR HORIZONTAL STACKED ASSEMBLIES SIMILAR TO THOSE DIAGRAMMED ON THIS SHEET.
2.

THE POSITIVE AND NEGATIVE DESIGN PRESSURE CHARTS ARE APPLICABLE FOR INSTALLATION PROCEDURES ON SHEET 3.
3.

WINDOW OR DOORS SHALL BE UNDER SEPARATE APPROVAL.
4.

DESIGN PRESSURES SHALL BE GOVERNED BY THE LESSER OF THE MULLION ASSEMBLY (LISTED IN TABLE) OR INDIVIDUAL WINDOW OR DOOR UNIT UNDER SEPARATE APPROVAL.
5.

MULLIONS MAY BE USED IN ASSEMBLIES UTILIZING MORE THAN TWO WINDOW OR DOOR UNITS AND CAN BE USED FOR UNLIMITED NUMBER OF PANELS.



L-MULLION LENGTH (IN)	TWO WAY-MAXIMUM DESIGN PRESSURE CAPACITY (PSF) 3/4" STEEL MULLION												
	W - TRIBUTARY WIDTH (IN)												
	24.0	30.0	36.0	42.0	48.0	54.0	60.0	66.0	72.0	78.0	84.0	90.0	96.0
36.0	150.0	142.7	118.9	101.9	89.2	79.3	71.3	64.9	59.4	54.9	51.0	47.6	44.6
48.0	133.8	107.0	89.2	76.4	66.9	59.4	53.5	48.6	44.6	41.2	38.2	35.7	33.4
60.0	107.0	85.6	71.3	61.1	53.5	47.6	42.8	38.9	35.7	32.9	30.6	28.5	26.8
72.0	89.2	71.3	59.4	51.0	44.6	39.6	35.7	32.4	29.7	27.4	25.5	23.8	22.3
84.0	76.4	61.1	51.0	43.7	38.2	34.0	30.6	27.8	25.5	23.5	21.8	20.4	19.1
96.0	66.9	53.5	44.6	38.2	33.4	29.7	26.8	24.3	22.3	20.6	19.1	17.8	16.7
108.0	59.4	47.6	39.6	34.0	29.7	26.4	23.8	21.6	19.8	18.3	17.0	15.9	-
120.0	53.5	42.8	35.7	30.6	26.8	23.8	21.4	19.5	17.8	16.5	15.3	-	-
132.0	48.6	38.9	32.4	27.8	24.3	21.6	19.5	17.7	16.2	-	-	-	-
144.0	44.6	35.7	29.7	25.5	22.3	19.8	17.8	16.2	-	-	-	-	-
156.0	41.2	32.9	27.4	23.5	20.6	18.3	16.5	-	-	-	-	-	-
168.0	38.2	30.6	25.5	21.8	19.1	17.0	15.3	-	-	-	-	-	-
180.0	35.7	28.5	23.8	20.4	17.8	15.9	-	-	-	-	-	-	-
192.0	33.4	26.8	22.3	19.1	16.7	-	-	-	-	-	-	-	-
204.0	31.5	25.2	21.0	18.0	15.7	-	-	-	-	-	-	-	-
216.0	29.7	23.8	19.8	17.0	-	-	-	-	-	-	-	-	-
228.0	28.2	22.5	18.8	16.1	-	-	-	-	-	-	-	-	-
240.0	26.8	21.4	17.8	15.3	-	-	-	-	-	-	-	-	-

NOTES:

1.

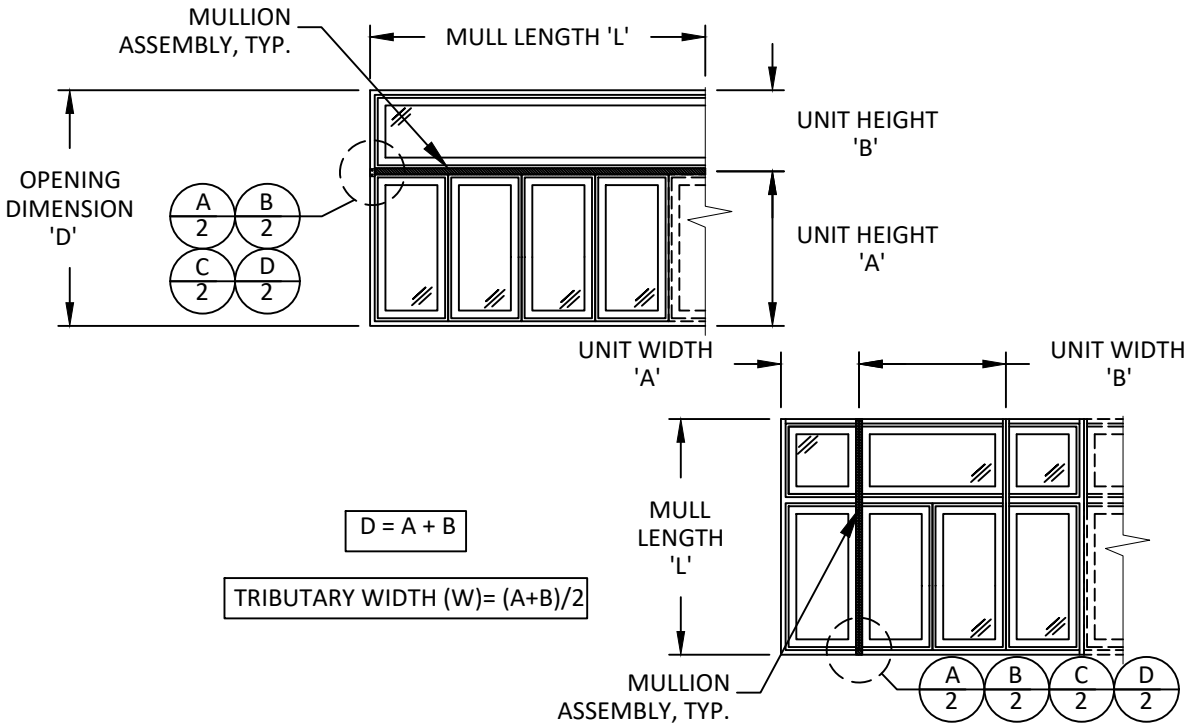
'TWO-WAY' MULLIONS REFER TO EITHER VERTICAL OR HORIZONTAL WITH INTERMEDIATE MEMBERS SIMILAR TO THOSE DIAGRAMMED ON THIS SHEET.
2.

THE POSITIVE AND NEGATIVE DESIGN PRESSURE CHARTS ARE APPLICABLE FOR INSTALLATION PROCEDURES ON SHEET 3.
3.

WINDOW OR DOORS SHALL BE UNDER SEPARATE APPROVAL.
4.

DESIGN PRESSURES SHALL BE GOVERNED BY THE LESSER OF THE MULLION ASSEMBLY (LISTED IN TABLE) OR INDIVIDUAL WINDOW OR DOOR UNIT UNDER SEPARATE APPROVAL.
5.

MULLIONS MAY BE USED IN ASSEMBLIES UTILIZING MORE THAN TWO WINDOW OR DOOR UNITS AND CAN BE USED FOR UNLIMITED NUMBER OF PANELS.



WINDSOR WINDOWS & DOORS

900 S. 19TH STREET.
WEST DES MOINES, IA 50265
PH: (515)223-6660 FAX: (515)224-1938

TITLE:

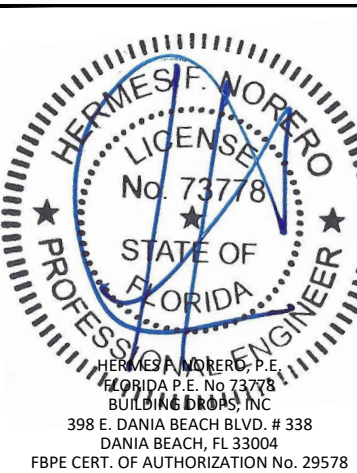
PINNACLE CLAD
STEEL MULLION
(WZ3)(IMPACT)
DESIGN PRESSURE TABLE
3/4" STEEL MULLION

PREPARED BY:

BUILDING DROPS, INC.
398 E. DANIA BEACH BLVD., STE. 338
DANIA BEACH, FL 33004
PH: (954)395-8478
FAX: (954)744-4738
WEB: www.buildingdrops.com

REMARKS	BY	DATE

THE INSTALLATION DETAILS DESCRIBED HEREIN ARE GENERIC AND MAY NOT REFLECT ACTUAL CONDITIONS FOR A SPECIFIC SITE. IF SITE CONDITIONS CAUSE INSTALLATION TO DEVIATE FROM THE REQUIREMENTS DETAILED HEREIN, A LICENSED ENGINEER OR ARCHITECT SHALL PREPARE SITE SPECIFIC DOCUMENTS FOR USE WITH THIS DOCUMENT.



FL #:

FL21905

DATE:

06.12.20

DWG. BY:

YC

CHK. BY:

HFN

SCALE:

NTS

DWG. #:

WWD055

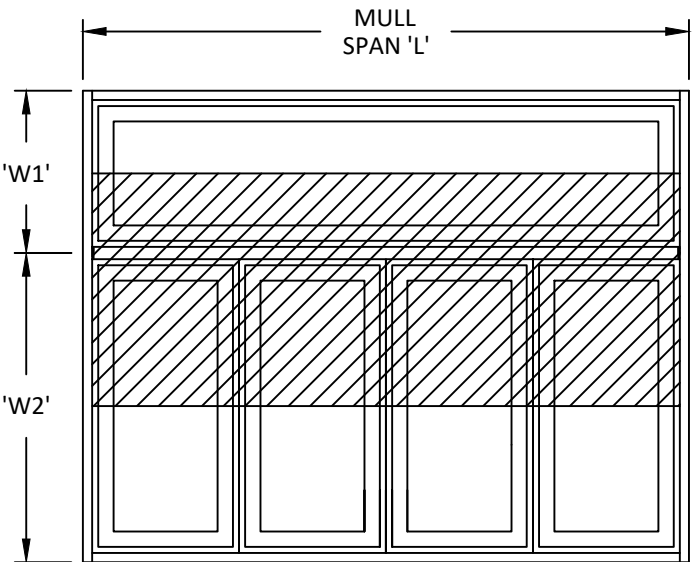
SHEET:

8

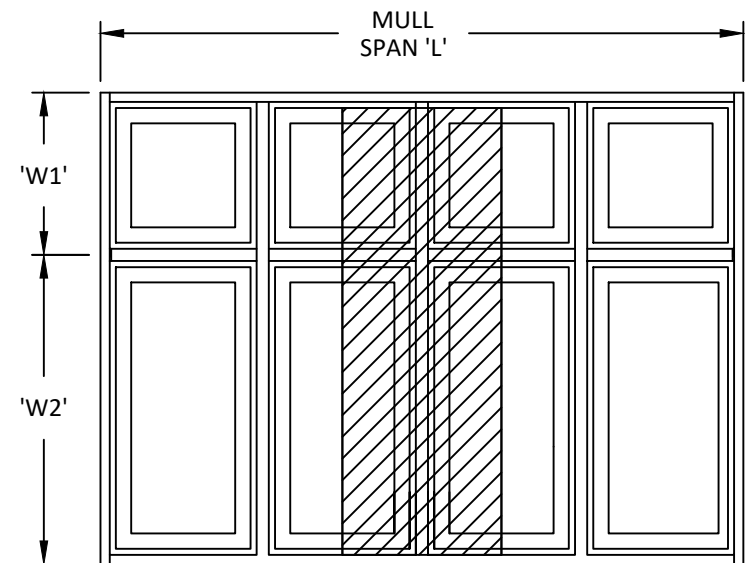
OF 9

s:\projects\windsor windows and doors\fbcs\fbcs submittal - add steel mulls to w23 mull charts to fl21095.dwg\wwd055.dwg 12/20/2020 6:46 PM

EXAMPLES OF TWO-WAY MULLION ASSEMBLIES



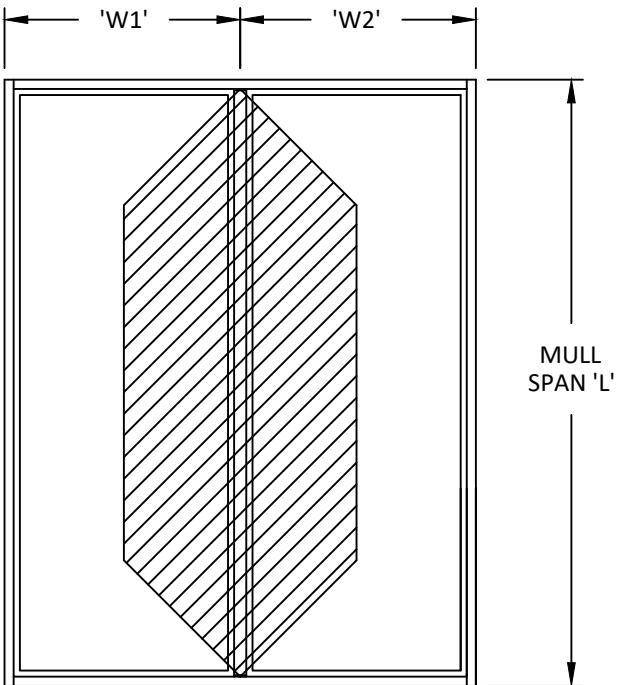
HORIZONTAL MULLION
TRANSOM OVER MULTIPLE UNITS



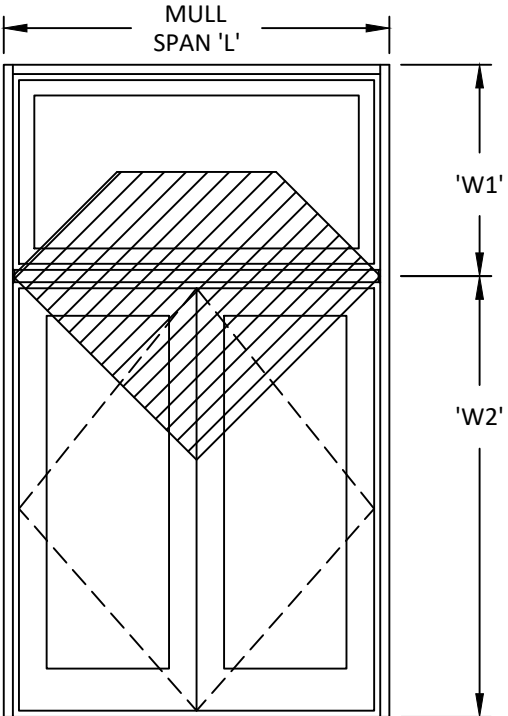
VERTICAL MULLION
TRANSOM OVER MULTIPLE UNITS

- NOTES:
1. DRAWINGS ARE DIAGRAMMATIC IN NATURE AND CONFIGURATIONS NOT SPECIFICALLY SHOWN MAY BE EXTRAPOLATED FROM THOSE SHOWN.
 2. IF THE LOADING TYPE CANNOT BE DETERMINED, USE TWO-WAY ASSEMBLY CONFIGURATION VALUES.
 3. FENESTRATION PRODUCTS SHALL BE ANCHORED AS PER SEPARATE APPROVAL.

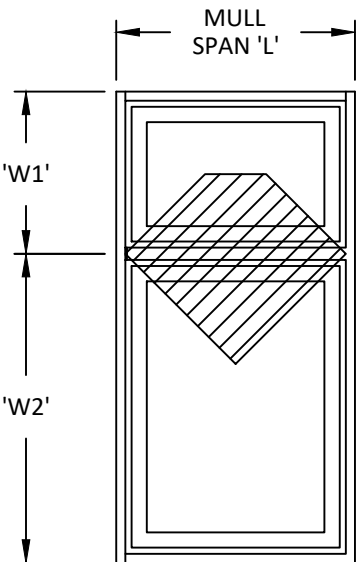
EXAMPLES OF ONE-WAY MULLION ASSEMBLIES



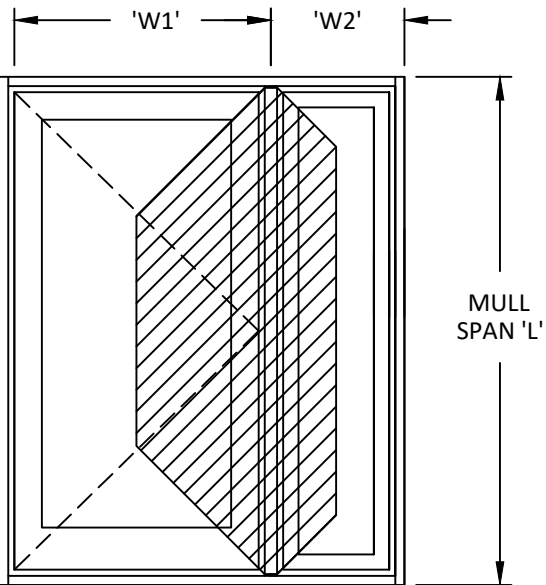
VERTICAL MULLION



HORIZONTAL MULLION



HORIZONTAL MULLION



VERTICAL MULLION
PIVOT DOOR W/ SIDELITE



WINDSOR WINDOWS
& DOORS

900 S. 19TH STREET.
WEST DES MOINES, IA 50265
PH: (515)223-6660 FAX: (515)224-1938

TITLE: PINNACLE CLAD
STEEL MULLION
(WZ3)(IMPACT)
MULLION ASSEMBLIES

PREPARED BY: BUILDING DROPS, INC.
398 E. DANIA BEACH BLVD., STE. 338
DANIA BEACH, FL 33004
PH: (954)399-8478
FAX: (954)744-4738
WEB: www.buildingdrops.com

REMARKS	BY	DATE

THE INSTALLATION DETAILS DESCRIBED HEREIN ARE GENERIC AND MAY NOT REFLECT ACTUAL CONDITIONS FOR A SPECIFIC SITE. IF SITE CONDITIONS CAUSE INSTALLATION TO DEVIATE FROM THE REQUIREMENTS DETAILED HEREIN, A LICENSED ENGINEER OR ARCHITECT SHALL PREPARE SITE SPECIFIC DOCUMENTS FOR USE WITH THIS DOCUMENT.

HERMES F. MORENO
LICENSED PROFESSIONAL ENGINEER
No. 73778
STATE OF FLORIDA
HERMES F. MORENO, P.E.
FLORIDA P.E. No. 73778
BUILDING DROPS, INC.
398 E. DANIA BEACH BLVD. # 338
DANIA BEACH, FL 33004
FBPE CERT. OF AUTHORIZATION No. 29578

FL #: FL21905

DATE: 06.12.20

DWG. BY: YC CHK. BY: HFN

SCALE: NTS

DWG. #: WWD055

SHEET: 9 OF 9